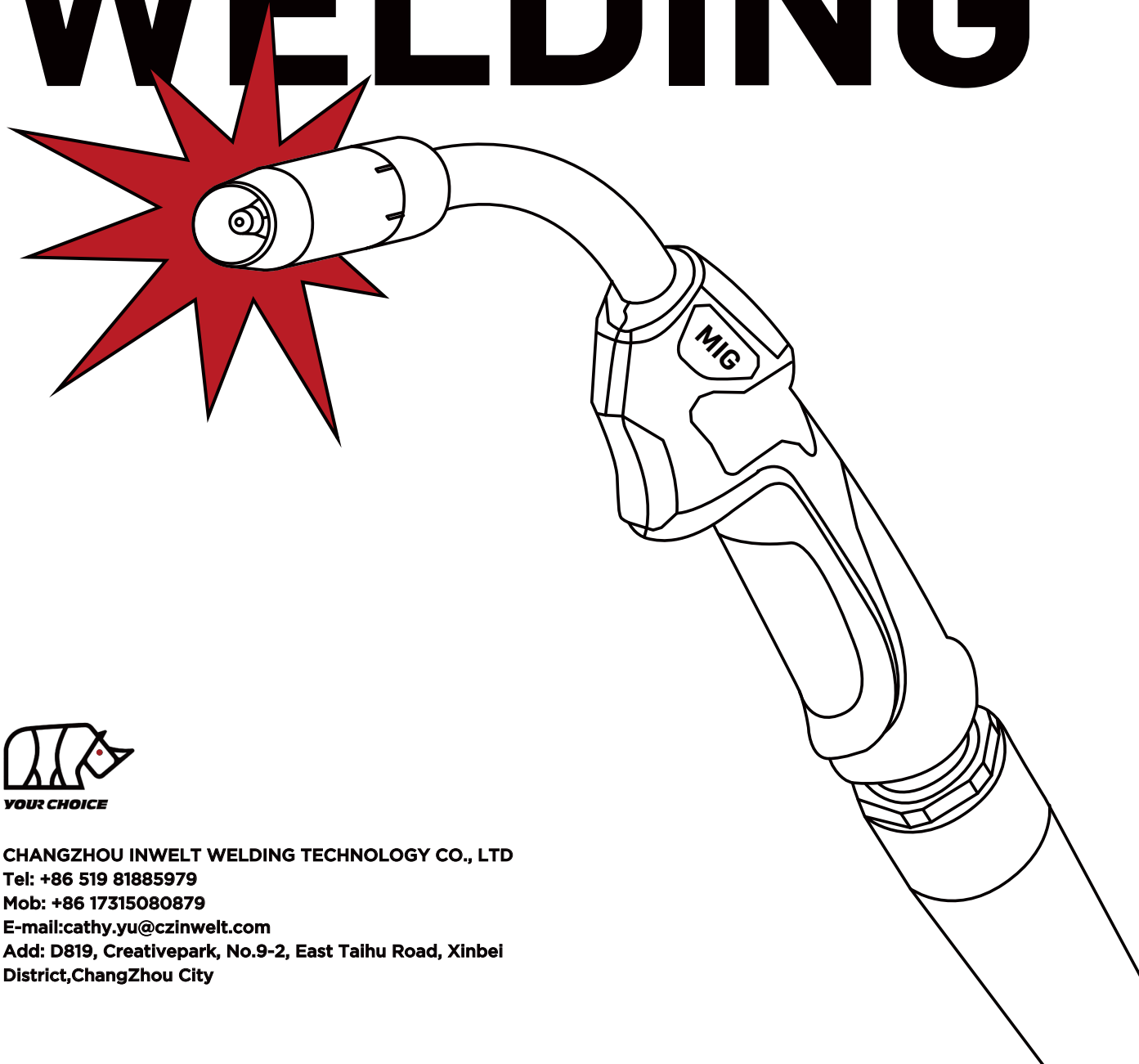


**YOUR CHOICE**

**MIG**

# **INWELT WELDING**



**YOUR CHOICE**

**CHANGZHOU INWELT WELDING TECHNOLOGY CO., LTD**

**Tel: +86 519 81885979**

**Mob: +86 17315080879**

**E-mail: cathy.yu@czinwelt.com**

**Add: D819, Creativepark, No.9-2, East Taihu Road, Xinbei  
District, ChangZhou City**



## COMPANY INTRODUCTION

### 公司简介

Inwelt is a customer oriented service platform focusing on welding torches, welding accessories and personal protective equipments. Our goal is to provide comprehensive professional service to our worldwide business partners. Inwelt team working tirelessly to implement industry leading quality control procedures, so our customers can enjoy user friendly ordering service with peace of mind knowing top rated QA team working for them here.

**YOUR PROFESSIONAL WELDING SUPPLIER**



## COMPANY PHILOSOPHY 公司理念

CHANGZHOU INWELT WELDING TECHNOLOGY CO., LTD

## MISSION



Provide high quality Welding products , highly adaptive operations flow !

为全球客户提供高品质的焊接产品，更自由的采购模式！

## VISION



To be a world class Supplier of welding products.  
A workplace with high employee satisfaction!

成为世界一流的焊接服务商，做一个高幸福指数的企业！

## VALUES



Team Work, Embrace Change,  
Passion for Life!

团队合作，拥抱变化，认真生活！

YOUR CHOICE



# CONTENT

## BZ torches 歐式焊枪

TORCH MINI 15 .....	01
TORCH 15 .....	02
TORCH 24 .....	03
TORCH 25 .....	04
TORCH 36 .....	05
TORCH 400/501D .....	06
TORCH 5000 .....	07
AUTO MIG 25 .....	08
AUTO MIG 36 .....	09
AUTO MIG 240 .....	10
AUTO MIG 500 .....	11

## BND torches 伯那德焊枪

BND 300/350 .....	12
BND 400 .....	13

## Pan torches 日式焊枪

TORCH P180 .....	14
TORCH P350 .....	15
TORCH P500 .....	15

## TW torches 特威可式焊枪

TW 200 .....	17
TW 300 .....	18
TW 400 .....	19
TW 500 .....	20

## Super Maxi torches Maxi式焊枪

SUPER MAXI 150 .....	21
SUPER MAXI 250 .....	22
SUPER MAXI 350 .....	23
SUPER MAXI 450 .....	24
SUPER MAXI 4000 .....	25
GF241 吸烟枪 .....	26
GF351 吸烟枪 .....	27
SFPG-20A 除尘器 .....	28
LBT150 拉丝枪 .....	29
LBT200/250 拉丝枪 .....	30
LBT240 拉丝枪 .....	31
TW2 拉丝枪 .....	32

## Spare parts 配件

SUITABLE FOR FRONIUS 弗尼斯式配件 .....	33
CONTACT TIPS 导电嘴 .....	35
NOZZLES 喷嘴 .....	38
DIFFUSERS AND TIP HOLDERS 分流器及导电嘴座 .....	42
LINERS 送丝管 .....	44
COMPLETE CABLES 电缆组 .....	47
CENTRALADAPTORS 中央插头插座 .....	48

## Technical Data

Cooling: Gas Cooled  
 Duty Cycle: 60% 占载率: 60%  
 wire size:  $\Phi 0.6-1.0\text{mm}$

## 技术参数

冷却方式: 气冷  
 180Amp CO<sub>2</sub>, 150Amp MIX  
 焊丝直径:  $\Phi 0.6-1.0\text{mm}$



Position	Code	Ref.	Description
1	IJDT0074	145.0075	Gas nozzle $\Phi 12\text{mm}$ ; 喷嘴 $\Phi 12\text{mm}$
2	IJDV0014-08	140.0059	Contact tip $\Phi 0.8\text{mmE-CU/M6X25}$ ; 导电嘴 $\Phi 0.8\text{mm/M6X25mm}$
3	IJDA0098	002.0009	Torch head 15 with fitting; 15AK 枪颈 (含配件)
3.1	IJAI0673	002.0078	Gas diffuser 15AK; 分流器 15AK
3.2	IJGU0819	002.0058	Spring 15AK; 弹簧 15AK
4	IJDW6061		MIG Mini handle black; 黑色迷你手柄 15AK
5	IJIR0081	185.0031	Trigger; 焊枪用开关
6	IJDO6771		Coaxial cable 3m; 同轴电缆组 3m
7	IJIK0039		Front Cable Support; 电缆护套
8	IJIK0656		Back box; 后把套
9	IJGU0074		Screw M4X6; 螺丝 M4X6
10	IJIK0074		Adaptor nut ; 锁紧螺母
11	IJUC0060	501.2155	Euro central adaptor body/air cooling ; 欧式中央接头/空冷
12	IJAU0082	501.0082	Liner nut ; 送丝管锁紧螺母
13	IJJD0231		Brass terminal $\Phi 2.0 \times 4.0\text{mm } 0.35\text{mm}$ ; 铜送丝管 $\Phi 2.0 \times 4.0\text{mm}/0.35\text{mm}$
14	IJJD0111	126.0005	Teflon liner $\Phi 4.0 \times 1.5\text{mm } 3\text{m}$ Blue; 特氟龙送丝管 $\Phi 4.0 \times 1.5\text{mm}/3\text{m}/\text{蓝色}$
15	IJJD0511	124.0011	Blue liner $\Phi 0.6-0.8\text{mm } 3\text{m}$ ; 带绝缘层送丝管 $\Phi 0.6-0.8\text{mm}/3\text{m}/\text{蓝色}$
16	IJDH6011		Spanner for MIG torches; MIG 焊枪扳手

## Complete Torch

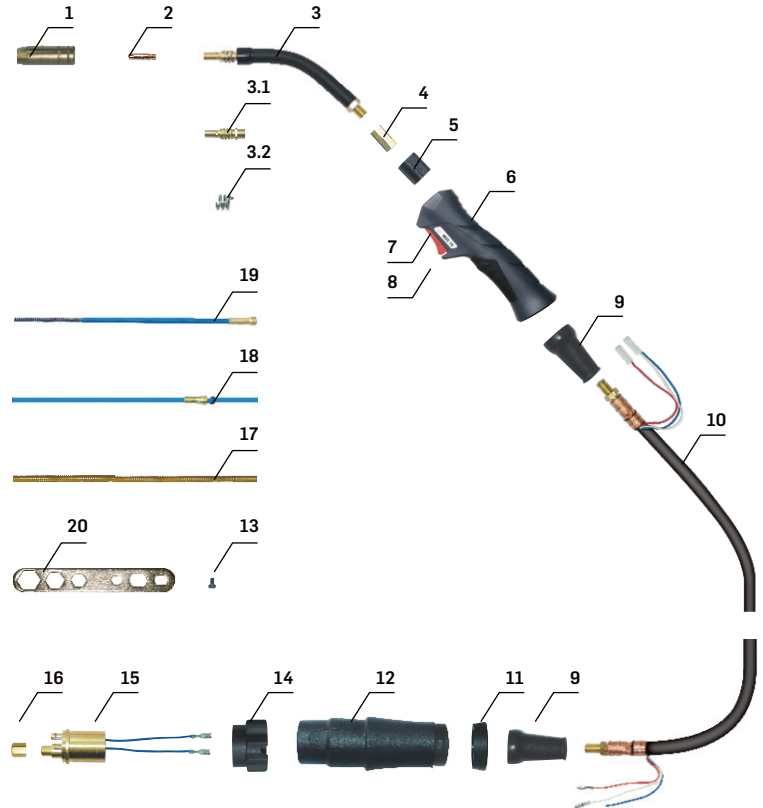
IJDU2061	MIG MINI 15 torch 3m euro adaptor; MIG 15AK/3m/焊枪15AK/3m弹性针/欧式迷你手柄
IJDU2067	MIG MINI 15 torch 4m euro adaptor; MIG 15AK/4m/焊枪15AK/4m弹性针/欧式迷你手柄
IJDU2068	MIG MINI 15 torch 5m euro adaptor; MIG 15AK/5m/焊枪15AK/5m弹性针/欧式迷你手柄

## Technical Data

Cooling: Gas Cooled  
 Duty Cycle: 60% 占载率: 60%  
 wire size:  $\Phi 0.6-1.0\text{mm}$

## 技术参数

冷却方式: 气冷  
 180Amp CO<sub>2</sub>, 150Amp MIX  
 焊丝直径:  $\Phi 0.6-1.0\text{mm}$



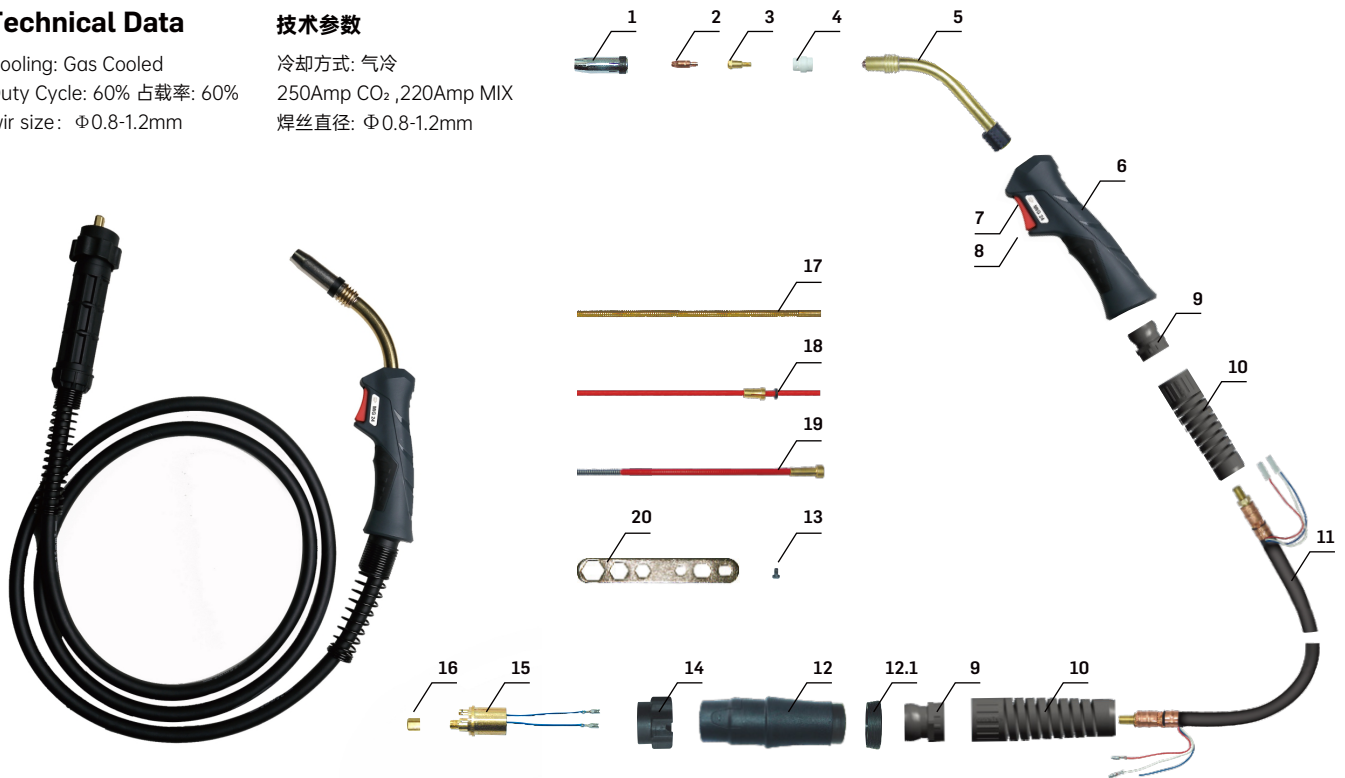
Position	Code	Ref.	Description
1	IJDT0074	145.0075	Gas nozzle $\Phi 12\text{mm}$ ; 喷嘴 $\Phi 12\text{mm}$
2	IJDV0014-08	140.0059	Contact tip $\Phi 0.8\text{mm}$ E-CU/M6X25; 导电嘴 $\Phi 0.8\text{mm}$ /M6X25mm
3	IJDA0098	002.0009	Torch head 15 with fitting; 15AK 枪颈 (含配件)
3.1	IJAI0673	002.0078	Gas diffuser 15AK; 分流器 15AK
3.2	IJGU0819	002.0058	Spring 15AK; 弹簧 15AK
4	IJAI0678		Hexagonal fitting; 六角适配器
5	IJIK0041-01		Plastic Body; 塑料适配器
6	IJDW0801-01		MIG handle Blue/Grip; MIG手柄/蓝色
7	IJIR0081	185.0031	Trigger; 焊枪用开关
8	IJGU0885		Screw M3X10; 螺丝 M3X10
9	IJIK0793		Joint for 15; 电缆支撑用球节 15枪用
10	IJDO0674	160.0065	Coaxial cable 3m; 同轴电缆组3m
11	IJIK0726		Housing for handle; 手柄锁紧环
12	IJIK0714		Back box; 后把套
13	IJGU0074		Screw M4X6; 螺丝 M4X6
14	IJIK0074		Adaptor nut; 焊枪锁紧螺母/塑料螺纹
15	IJUC0060	501.2155	Euro central adaptor body/air cooling; 欧式中央接头/空冷
16	IJAU0082	501.0082	Liner nut; 送丝管锁紧螺母
17	IJJD0231		Brass terminal $\Phi 2.0 \times 4.0\text{mm}$ 0.35m; 铜送丝管 $\Phi 2.0 \times 4.0\text{mm}$ /0.35m
18	IJJD0111	126.0005	Teflon liner $\Phi 4.0 \times 1.5\text{mm}$ 3m Blue; 特氟龙送丝管 $\Phi 4.0 \times 1.5\text{mm}$ /3m/蓝色
19	IJJD0511	124.0011	Blue liner $\Phi 0.6-0.8\text{mm}$ 3m; 带绝缘层送丝管 $\Phi 0.6-0.8\text{mm}$ /3m/蓝色
20	IJDH6011		Spanner for MIG torches; MIG 焊枪扳手
<b>Complete Torch</b>			
	IJDU2009-36		MIG 15AK torch 3m euro adaptor /spring pins; 焊枪15AK/3m/弹性针
	IJDU2000-36		MIG 15AK torch 4m euro adaptor /spring pins; 焊枪15AK/4m/弹性针
	IJDU2006-36		MIG 15AK torch 5m euro adaptor /spring pins; 焊枪15AK/5m/弹性针

## Technical Data

Cooling: Gas Cooled  
 Duty Cycle: 60% 占载率: 60%  
 wire size:  $\Phi$ 0.8-1.2mm

## 技术参数

冷却方式: 气冷  
 250Amp CO<sub>2</sub>, 220Amp MIX  
 焊丝直径:  $\Phi$ 0.8-1.2mm



Position	Code	Ref.	Description
1	IJDT0817	145.0080	Gas nozzle $\Phi$ 12.5mm;喷嘴 $\Phi$ 12.5mm
2	IJDV0014-10	140.0253	Contact tip $\Phi$ 1.0mmE-CU/M6X25;导电嘴 $\Phi$ 1.0mm/M6X25mm
3	IJDV0694	142.0003	Contact tip holder 24KD M6X26mm;导电嘴座/24KD/M6X26mm
4	IJDG0540	012.0183	White ceramic gas diffuser 24KD;白色陶瓷分流器 24KD
5	IJDA0641	012.0001	Torch head 24KD;枪颈 24KD
6	IJDW0801-01		MIG handle Blue/Grip;MIG手柄/蓝色
7	IJIR0081	185.0031	Trigger;焊枪用开关
8	IJGU0885		Screw M3X10;螺丝 M3X10
9	IJIK0032		Joint for MIG handle;MIG手柄用球头
10	IJGU0893		Spring for cable support;电缆支撑弹簧
11	IJDO0775		Coaxial cable 3m;同轴电缆组 3m
12	IJIK0714		Back box;后把套
12.1	IJIK0726		Housing for handle;手柄锁紧环
13	IJGU0074		Screw M4X6;螺丝 M4X6
14	IJIK0083		Adaptor nut;焊枪锁紧螺母/蓝色
15	IJUC0060	501.2155	Euro central adaptor body/air cooling ;欧式中央接头/空冷
16	IJAU0082	501.0082	Liner nut ;送丝管锁紧螺母
17	IJJD0231		Brass terminal $\Phi$ 2.0X4.0mm 0.35m;铜送丝管 $\Phi$ 2.0X4.0mm/0.35m
18	IJJD0171	126.0021	Teflon liner $\Phi$ 2.0X4.0mm 3m Red;特氟龙送丝管 $\Phi$ 2.0X4.0mm/3m/红色
19	IJJD0571	124.0026	Red liner $\Phi$ 1.0-1.2mm 3m;带绝缘层送丝管 $\Phi$ 1.0-1.2mm/3m/红色
20	IJDH6011		Spanner for MIG torches;MIG 焊枪扳手

## Complete Torch

IJDU2609-36	MIG 24KD torch 3m euro adaptor /spring pins;焊枪24KD/3m/弹性针
IJDU2600-36	MIG 24KD torch 4m euro adaptor /spring pins;焊枪24KD/4m/弹性针
IJDU2606-36	MIG 24KD torch 5m euro adaptor /spring pins;焊枪24KD/5m/弹性针

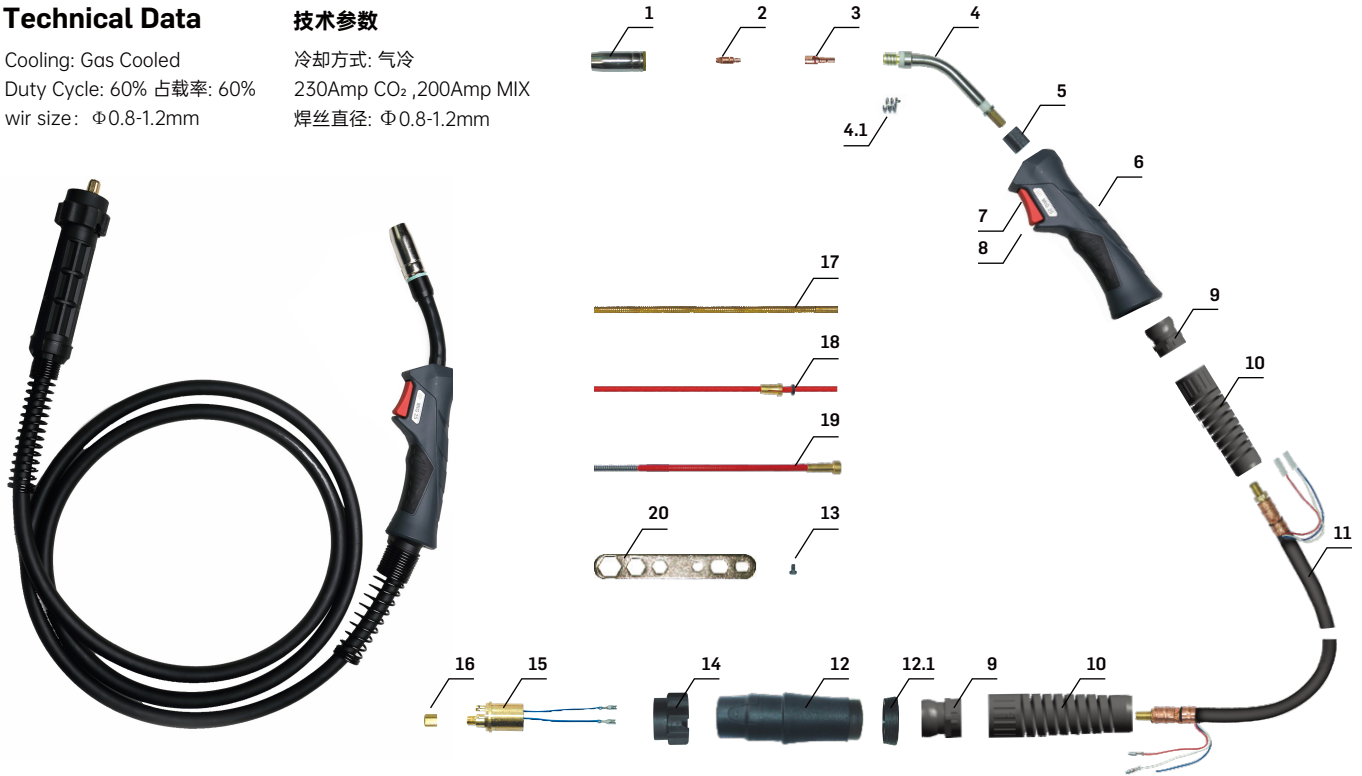


## Technical Data

Cooling: Gas Cooled  
 Duty Cycle: 60% 占载率: 60%  
 wire size:  $\Phi$ 0.8-1.2mm

## 技术参数

冷却方式: 气冷  
 230Amp CO<sub>2</sub>, 200Amp MIX  
 焊丝直径:  $\Phi$ 0.8-1.2mm



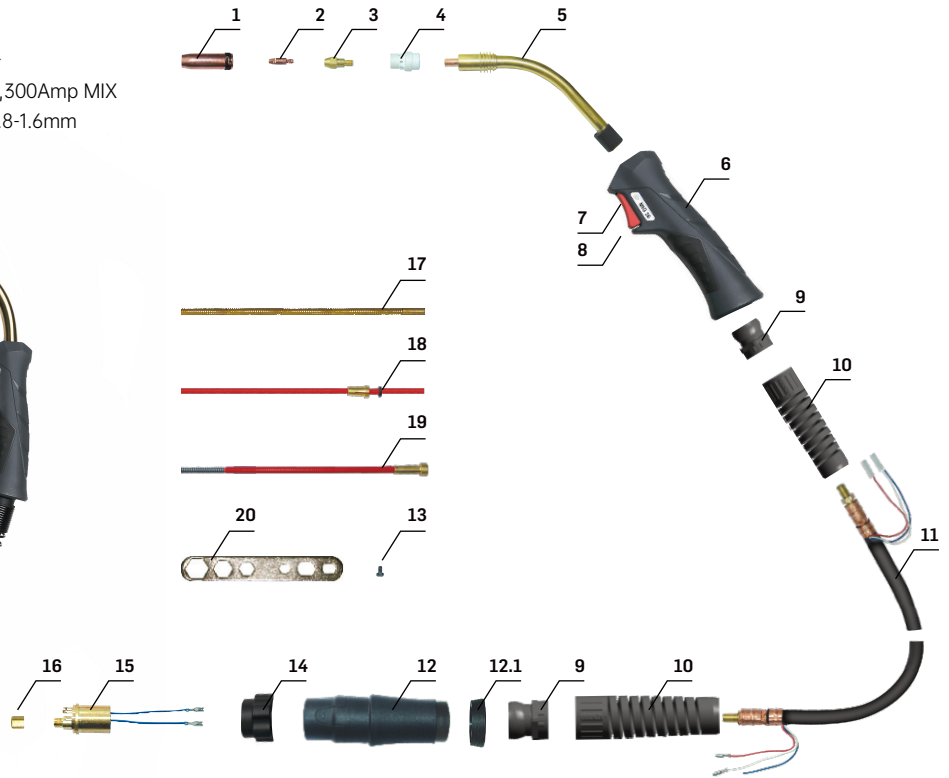
Position	Code	Ref.	Description
1	IJDT0089	145.0100	Gas nozzle $\Phi$ 15mm;喷嘴 $\Phi$ 15mm
2	IJDV0015-10	140.0242	Contact tip $\Phi$ 1.0mmE-CU/M6X28;导电嘴 $\Phi$ 1.0mm/M6X28mm
3	IJDG0072	142.0001	Gas diffuser M6X35mm;分流器 M6X35mm/25AK
4	IJDA0099	004.0012	Torch head 25AK;枪颈 25AK
4.1	IJGU0810	003.0013	Spring 25AK;弹簧 25AK
5	IJK0041-01	400.0044	Plastic Body;塑料适配器
6	IJDW0801-01		MIG handle Blue/Grip;MIG手柄/蓝色
7	IJIR0081	185.0031	Trigger;焊枪用开关
8	IJGU0885		Screw M3X10;螺丝 M3X10
9	IJK0032		Joint for MIG handle;MIG手柄用球头
10	IJGU0893		Spring for cable support;电缆支撑弹簧
11	IJDO0675		Coaxial cable 3m;同轴电缆组3m
12	IJK0714		Back box;后把套
12.1	IJK0726		Housing for handle;手柄锁紧环
13	IJGU0074		Screw M4X6;螺丝 M4X6
14	IJK0083		Adaptor nut;焊枪锁紧螺母/蓝色
15	IJUC0060	501.2155	Euro central adaptor body/air cooling ;欧式中央接头/空冷
16	IJAU0082	501.0082	Liner nut ;送丝管锁紧螺母
17	IJJD0231		Brass terminal $\Phi$ 2.0X4.0mm 0.35m;铜送丝管 $\Phi$ 2.0X4.0mm/0.35m
18	IJJD0171	126.0021	Teflon liner $\Phi$ 2.0X4.0mm 3m Red;特氟龙送丝管 $\Phi$ 2.0X4.0mm/3m/红色
19	IJJD0571	124.0026	Red liner $\Phi$ 1.0-1.2mm 3m;带绝缘层送丝管 $\Phi$ 1.0-1.2mm/3m/红色
20	IJDH6011		Spanner for MIG torches;MIG 焊枪扳手
<b>Complete Torch</b>			
	IJDU2709-36		MIG 25AK torch 3m euro adaptor /spring pins;焊枪25AK/3m/弹性针
	IJDU2700-36		MIG 25AK torch 4m euro adaptor /spring pins;焊枪25AK/4m/弹性针
	IJDU2706-36		MIG 25AK torch 5m euro adaptor /spring pins;焊枪25AK/5m/弹性针

## Technical Data

Cooling: Gas Cooled  
 Duty Cycle: 60% 占载率: 60%  
 wire size:  $\Phi$ 0.8-1.6mm

## 技术参数

冷却方式: 气冷  
 340Amp CO<sub>2</sub>, 300Amp MIX  
 焊丝直径:  $\Phi$ 0.8-1.6mm



Position	Code	Ref.	Description
1	IJDT0083	145.0078	Gas nozzle $\Phi$ 16mm; 喷嘴 $\Phi$ 16mm
2	IJDV0015-12	140.0379	Contact tip $\Phi$ 1.2mmE-CU/M6X28; 导电嘴 $\Phi$ 1.2mm/M6X28mm
3	IJDV0697	142.0011	Contact tip holder M6X32mm; 导电嘴座/M6 $\times$ 32mm
4	IJDG0573	014.0023	White ceramic gas diffuser; 白色陶瓷分流器 36KD
5	IJDA0090	014.0006	Torch head 36KD; 枪颈 36KD
6	IJDW0801-01		MIG handle Blue/Grip; MIG手柄/蓝色
7	IJIR0081	185.0031	Trigger; 焊枪用开关
8	IJGU0885		Screw M3X10; 螺丝 M3X10
9	IJIK0032		Joint for MIG handle; MIG手柄用球头
10	IJGU0893		Spring for cable support; 电缆支撑弹簧
11	IJDO0681	160.0364	Coaxial cable 3m; 同轴电缆组3m
12	IJIK0714		Back box; 后把套
12.1	IJIK0726		Housing for handle; 手柄锁紧环
13	IJGU0074		Screw M4X6; 螺丝 M4X6
14	IJIK0083		Adaptor nut; 焊枪锁紧螺母/蓝色
15	IJUC0060	501.2155	Euro central adaptor body/air cooling ; 欧式中央接头/空冷
16	IJAU0082	501.0082	Liner nut; 送丝管锁紧螺母
17	IJJD0237		Brass terminal $\Phi$ 3.0X4.5mm 0.35m; 铜送丝管 $\Phi$ 3.0X4.5mm/0.35m
18	IJJD0221	126.0039	Teflon liner $\Phi$ 3.0X4.5mm 3m Yellow; 特氟龙管 $\Phi$ 3.0X4.5mm/3m/黄色
19	IJJD0501	124.0041	Yellow liner $\Phi$ 1.2-1.6mm 3m; 带绝缘层送丝管 $\Phi$ 1.2-1.6mm/3m/黄色
20	IJDH6011		Spanner for MIG torches; MIG 焊枪扳手

## Complete Torch

IJDU2809-36	MIG 26KD torch 3m euro adaptor /spring pins; 焊枪26KD/3m/弹性针
IJDU2800-36	MIG 26KD torch 4m euro adaptor /spring pins; 焊枪26KD/4m/弹性针
IJDU2806-36	MIG 26KD torch 5m euro adaptor /spring pins; 焊枪26KD/5m/弹性针

# TORCH 400/501D



## 400 Technical Data

Cooling: Water Cooled  
Duty Cycle: 100% 占载率: 100%  
wir size:  $\Phi$ 0.8-1.2mm

## 400 技术参数

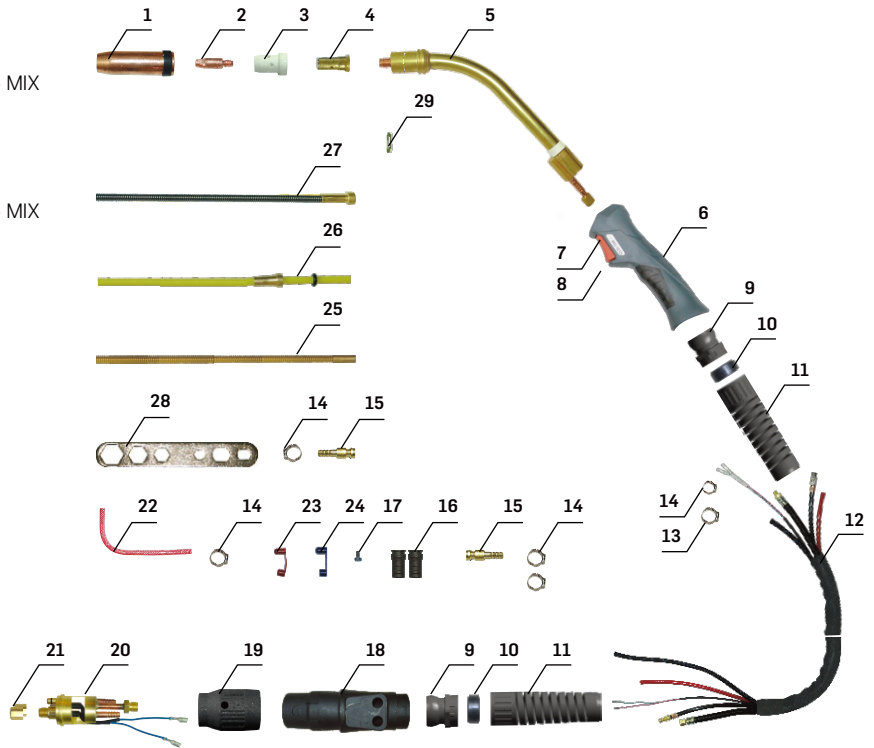
冷却方式: 水冷  
400Amp CO<sub>2</sub>, 350Amp MIX  
焊丝直径:  $\Phi$ 0.8-1.2mm

## 501D Technical Data

Cooling: Water Cooled  
Duty Cycle: 100% 占载率: 100%  
wir size:  $\Phi$ 1.0-1.6mm

## 501D 技术参数

冷却方式: 水冷  
500Amp CO<sub>2</sub>, 450Amp MIX  
焊丝直径:  $\Phi$ 1.0-1.6mm



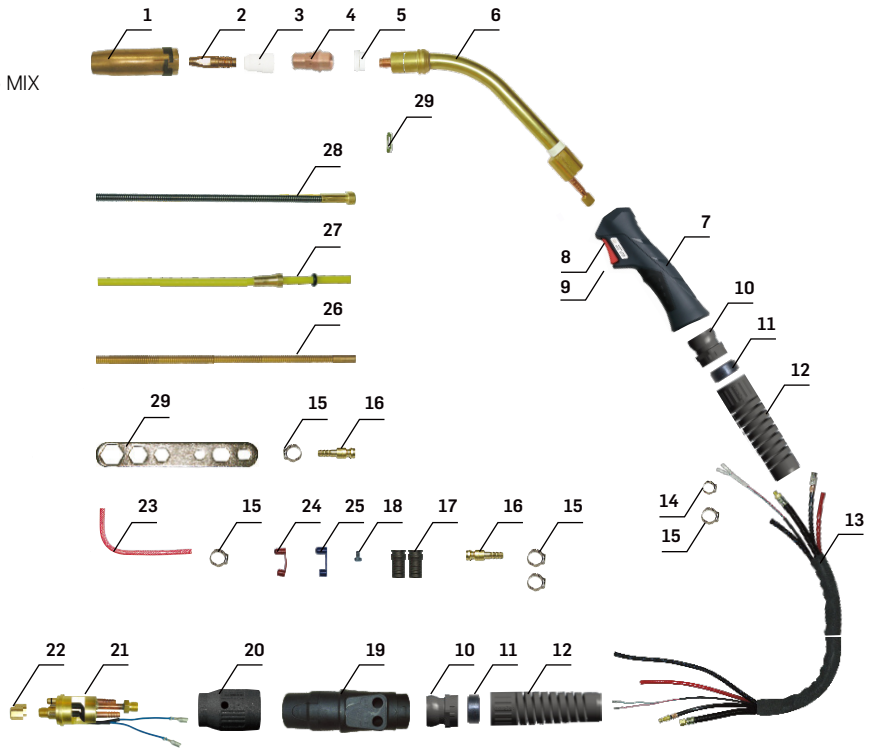
Position	Code	Ref.	Description
1	IJDT0724	145.0085	Gas nozzle $\Phi$ 16mm; 喷嘴 $\Phi$ 16mm
2	IJDV0016-12	140.0442	Contact tip $\Phi$ 1.2mmE-CU/M8X30; 导电嘴 $\Phi$ 1.2mm/M8X30mm
3	IJDG0535	030.0190	White ceramic gas diffuser; 白色陶瓷分流器 401D-501D
4	IJDG0032	142.0022	Contact tip holder M8X25mm; 导电嘴座/M8X25mm
5			Torch head; 枪颈
5.1	IJDJ0066	034.0001	Torch head 501D; 枪颈 501D
5.2	IJDJ0060	033.0001	Torch head 401D; 枪颈 401D
6	IJDW0801-01		MIG handle Blue/Grip; MIG手柄/蓝色
7	IJIR0081	185.0031	Trigger; 焊枪用开关
8	IJGU0885		Screw M3X10; 螺丝 M3X10
9	IJK0032		Joint for MIG handle; MIG手柄用球头
10-1	IJK0863		HOUSING RING/BIG/INSIDE; 锁套内环/大
10-2	IJK0866		HOUSING FOR PLASMA BACK BOX/BIG; 等离子后把套用锁紧环/大
11	IJGU0833		Spring for cable support; 电缆支撑弹簧
12	IJDE0078		Cable assembly 3m 401D-501D; 水冷电缆组 3m/401D-501D
13	IJGU0733		Clamp $\Phi$ 9.5; 卡箍 $\Phi$ 9.0
14	IJGU0741		Clamp $\Phi$ 8.7; 卡箍 $\Phi$ 8.0
15	IJAU8081	501.0114	Quick connector water $\Phi$ 6mm; 水冷快速插头 $\Phi$ 6mm
16	IJK0775		Hose support for water cooled rear box; 水冷枪后把套用水管支柱
17	IJGU0074		Screw M4X6; 螺丝 M4X6
18	IJK0774		Back box for water cooled; 水冷枪后把套
19	IJK0083		Adaptor nut/Blue; 焊枪锁紧螺母/蓝色
20	IJUC0068	501.2156	Euro central adaptor body/water cooling; 欧式水冷中央接头/水冷
21	IJAU0082	501.0082	Liner nut; 送丝锁紧螺母
22	IJLI0616		Output water tube M5X8mm 0.8m red; EPDM 编织管 M5x8mm 0.8m/红色
23	IJK0317		Plastic support for water cooling connector /Red; 水堵/红色
24	IJK0319		Plastic support for water cooling connector /Blue; 水堵/蓝色
25	IJJD0237		Brass terminal $\Phi$ 3.0X4.5mm 0.35m; 铜送丝管 $\Phi$ 3.0X4.5mm/0.35m
26	IJJD0221	126.0039	Teflon liner $\Phi$ 3.0X4.5mm 3m Yellow; 特氟龙管 $\Phi$ 3.0X4.5mm/3m/黄色
27	IJJD0591	122.0056	Steel liner $\Phi$ 1.2-1.6mm 3m; 钢送丝管 $\Phi$ 1.2-1.6mm/3m
28	IJDH6011		Spanner for MIG torches; MIG 焊枪扳手
29	IJAI6734	030.0019	Insulator 401D-501D; 绝缘垫片 401D-501D
<b>Complete Torch</b>			
	IJDI2209-36		MIG 401D torch 3m euro adaptor/spring pins; 焊枪401D/3m/弹性针
	IJDI2200-36		MIG 401D torch 4m euro adaptor/spring pins; 焊枪401D/4m/弹性针
	IJDI2206-36		MIG 401D torch 5m euro adaptor/spring pins; 焊枪401D/5m/弹性针
	IJDI2209-36		MIG 501D torch 3m euro adaptor/spring pins; 焊枪501D/3m/弹性针
	IJDI2300-36		MIG 501D torch 4m euro adaptor/spring pins; 焊枪501D/4m/弹性针
	IJDI2306-36		MIG 501D torch 5m euro adaptor/spring pins; 焊枪501D/5m/弹性针

## Technical Data

Cooling: Water Cooled  
 Duty Cycle: 100% 占载率: 100%  
 wire size:  $\Phi$ 0.8-1.6mm

## 技术参数

冷却方式: 水冷  
 500Amp CO<sub>2</sub>, 450Amp MIX  
 焊丝直径:  $\Phi$ 0.8-1.6mm



Position	Code	Ref.	Description
1	IJD0731		Gas nozzle $\Phi$ 16mm;喷嘴 $\Phi$ 16mm
2	IJDV0818-12		Contact tip $\Phi$ 1.2mmE-CU/M10X40;导电嘴 $\Phi$ 1.2mm/M10X40mm
3	IJDG0543	42.0100.1007	White ceramic gas diffuser;白色陶瓷分流器
4	IJDG0014	42.0001.5122	Gas Diffuser;分流器
5	IJA11246	42.0100.1016	Insulator ring;绝缘环 5000
6	IJDJ0064		Torch head 5000;枪颈 5000
7	IJDW0801-01		MIG handle Blue/Grip;MIG手柄/蓝色
8	IJR0081	185.0031	Trigger;焊枪用开关
9	IJGU0885		Screw M3X10;螺丝 M3X10
10	IJK0032		Joint for MIG handle;MIG手柄用球头
11-1	IJK0863		HOUSING RING/BIG/INSIDE; 锁紧内环/大
11-2	IJK0866		HOUSING FOR PLASMA BACK BOX/BIG;等离子后把套用锁紧环/大
12	IJGU0833		Spring for cable support;电缆支撑弹簧
13	IJDE0078		Cable assenbly 3m 401D-501D;水冷电缆组 3m/401D-501D
14	IJGU0733		Clamp $\Phi$ 9.5;卡箍 $\Phi$ 9.0
15	IJGU0741		Clamp $\Phi$ 8.7;卡箍 $\Phi$ 8.0
16	IJAU0801	501.0114	Quick connector water $\Phi$ 6mm;水冷快速插头 $\Phi$ 6mm
17	IJK0775		Hose support for water cooled rear box;水冷枪后把套用水管支柱
18	IJGU0074		Screw M4X6;螺丝 M4X6
19	IJK0774		Back box for water cooled;水冷枪后把套
20	IJK0083		Adaptor nut/Blue;焊枪锁紧螺母/蓝色
21	IJUC0068	501.2156	Euro central adaptor body/water cooling;欧式水冷中央接头/水冷
22	IJAU0082	501.0082	Liner nut;送丝管锁紧螺母
23	IJLI 0616		Output water tube M5X8mm 0.8m red;EPDM 编织管 M5x8mm 0.8m/红色
24	IJK0317		Plastic support for water cooling connector Red水堵/红色
25	IJK0319		Plastic support for water cooling connector Blue水堵/蓝色
26	IJJD0237		Brass terminal $\Phi$ 3.0X4.5mm 0.35m;铜送丝管 $\Phi$ 3.0X4.5mm/0.35m
27	IJJD0221	126.0039	Teflon liner $\Phi$ 3.0X4.5mm 3m Yellow;特氟龙管 $\Phi$ 3.0X4.5mm/3m/黄色
28	IJJD0591	122.0056	Steel liner $\Phi$ 1.2-1.6mm 3m;钢送丝管 $\Phi$ 1.2-1.6mm/3m
29	IJDH6011		Spanner for MIG torches;MIG 焊枪扳手

### Complete Torch

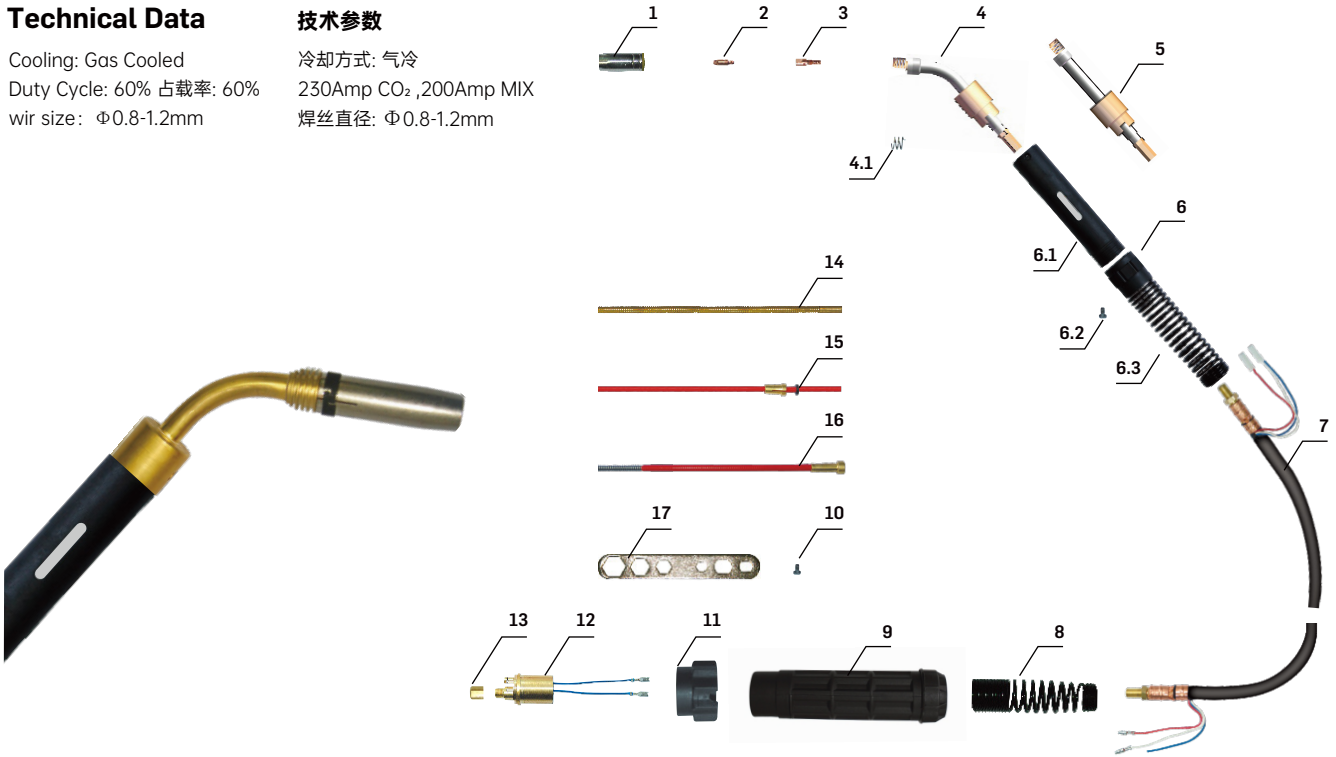
IJD12349-36	MIG 5000 torch 3m euro adaptor/spring pins;焊枪5000/3m/弹性针
IJD12340-36	MIG 5000 torch 4m euro adaptor/spring pins;焊枪5000/4m/弹性针
IJD12346-36	MIG 5000 torch 5m euro adaptor/spring pins;焊枪5000/5m/弹性针

## Technical Data

Cooling: Gas Cooled  
 Duty Cycle: 60% 占载率: 60%  
 wire size:  $\Phi 0.8-1.2\text{mm}$

## 技术参数

冷却方式: 气冷  
 230Amp CO<sub>2</sub>, 200Amp MIX  
 焊丝直径:  $\Phi 0.8-1.2\text{mm}$



Position	Code	Ref.	Description
1	IJDT0089	145.0100	Gas nozzle $\Phi 15\text{mm}$ ; 喷嘴 $\Phi 15\text{mm}$
2	IJDV0015-10	140.0242	Contact tip $\Phi 1.0\text{mm}$ E-CU/M6X28; 导电嘴 $\Phi 1.0\text{mm}/\text{M}6\text{X}28\text{mm}$
3	IJDG0072	142.0001	Gas Diffuser M6X35; 分流器 M6X35 25AK
4	IJDA0791		Torch head auto 25AK 45°; 自动枪颈 25AK 45°
4.1	IJGU0810	003.0013	spring 25AK; 弹簧 25AK
5	IJDA0797		Torch head auto 25AK 0°; 自动枪颈 25AK 0°
6	IJDW0682		Handle for auto MIG torch; 手柄套件MIG自动枪颈用
6.1	IJDW0686		Handle for auto MIG torch; 手柄MIG自动枪颈用
6.2	IJGU0070		Screw M4X8 ; 螺丝 M4X8
6.3	IJGU0809		Spring for cable support; 电缆支撑弹簧
7	IJDO0675		Coaxial cable 3m; 同轴电缆组/3m
8	IJGU0808		Spring for cable support; 电缆支撑弹簧
9	IJK0656		Back box; 后把套
10	IJGU0074		Screw M4X6; 螺丝 M4X6
11	IJK0081		Adaptor nut/Blue; 焊枪锁紧螺母
12	IJUC0060	501.2155	Euro central adaptor body/air cooling; 欧式中央接头/空冷
13	IJAU0082	501.0082	Liner nut; 送丝管锁紧螺母
14	IJJD0231		Brass terminal $\Phi 2.0\text{X}4.0\text{mm}$ 0.35m; 铜送丝管 $\Phi 2.0\text{X}4.0\text{mm}/0.35\text{m}$
15	IJJD0171	126.0021	Teflon liner $\Phi 2.0\text{X}4.0\text{mm}$ 3m Red; 特氟龙管 $\Phi 2.0\text{X}4.0\text{mm}/3\text{m}/\text{红色}$
16	IJJD0571	124.0026	Red liner $\Phi 1.0-1.2\text{mm}$ 3m; 带绝缘层送丝管 $\Phi 1.0-1.2\text{mm}/3\text{m}/\text{红色}$
17	IJDH6011		Spanner for MIG torches; MIG 焊枪扳手

## Complete Torch

IJDU0526	Torch auto MIG25AK 0° 3m euro adaptor/spring pins; 自动焊枪25AK/0°/3m/弹性针
IJDU0528	Torch auto MIG25AK 45° 3m euro adaptor/spring pins; 自动焊枪25AK/45°/3m/弹性针

## Technical Data

Cooling: Gas Cooled  
 Duty Cycle: 60% 占载率: 60%  
 wire size:  $\Phi$ 0.8-1.6mm

## 技术参数

冷却方式: 气冷  
 300Amp CO<sub>2</sub>, 270Amp MIX  
 焊丝直径:  $\Phi$ 0.8-1.6mm



Position	Code	Ref.	Description
1	IJDT0083	145.0078	Gas nozzle $\Phi$ 16mm;喷嘴 $\Phi$ 16mm 36KD
2	IJDV0015-12	140.0379	Contact tip $\Phi$ 1.2mmE-CU/M6X28;导电嘴 $\Phi$ 1.2mm/M6X28mm
3	IJDV0697	142.0011	Contact tip holder M6X32mm;导电嘴座36KD/M6X32mm
4	IJDG0573	014.0023	White ceramic gas diffuser;白色陶瓷分流器 36KD
5	IJDA0033		Torch head auto 36KD 45°;自动枪颈 36KD 45°
6	IJDA0034		Torch head auto 36KD 0°;自动枪颈 36KD 0°
7	IJDW0682		Handle for auto MIG torch;MIG自动枪颈用手柄套件
7.1	IJDW0686		Handle for auto MIG torch;手柄MIG自动枪颈用
7.2	IJGU0070		Screw M4X8;螺丝 M4X8
7.3	IJGU0809		Spring for cable support;电缆支撑弹簧
8	IJDO0681	160.0364	Coaxial cable 3m;同轴电缆组/3m
9	IJGU0808		Spring for cable support;电缆支撑弹簧
10	IJK0656		Back box;后把套
11	IJGU0074		Screw M4X6;螺丝 M4X6
12	IJK0081		Adaptor nut/Blue;焊枪锁紧螺母
13	IJUC0060	501.2155	Euro central adaptor body/air cooling;欧式中央接头/空冷
14	IJAU0082	501.0082	Liner nut;送丝管锁紧螺母
15	IJJD0237		Brass terminal $\Phi$ 3.0X4.5mm 0.35m;铜送丝管 $\Phi$ 3.0X4.5mm/0.35m
16	IJJD0221	126.0039	Teflon liner $\Phi$ 3.0X4.5mm 3m Yellow;特氟龙管 $\Phi$ 3.0X4.5mm/3m/黄色
17	IJJD0501	124.0041	Yellow liner $\Phi$ 1.2-1.6mm 3m;带绝缘层送丝管 $\Phi$ 1.2-1.6mm/3m/黄色
18	IJDH6011		Spanner for MIG torches;MIG 焊枪扳手

## Complete Torch

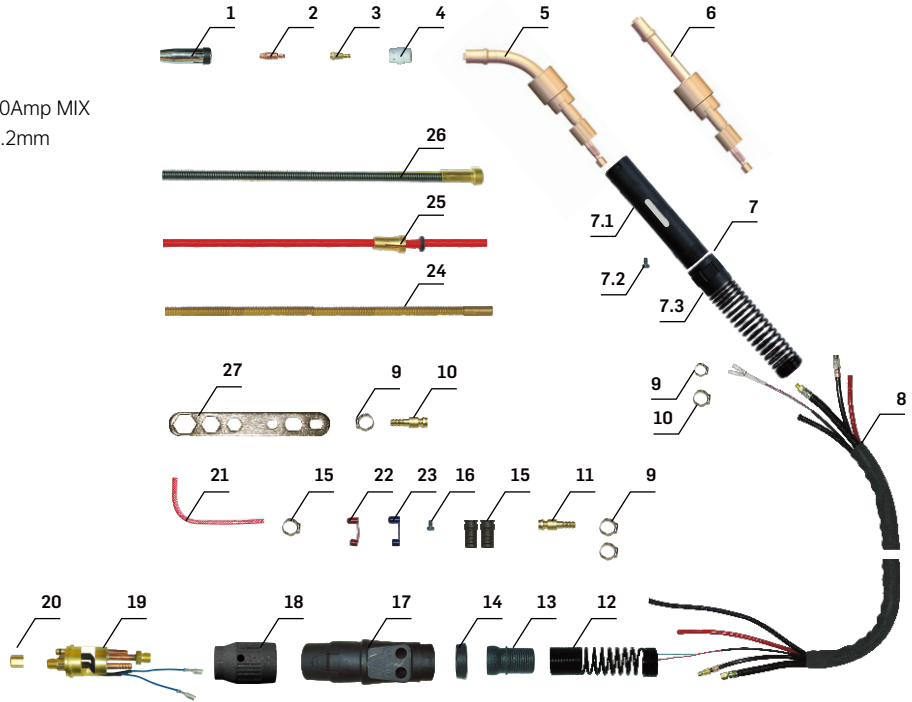
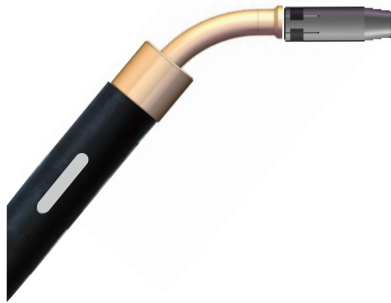
IJDU0533	Torchauto MIG36KD 0°3m euro adaptor/spring pins;自动焊枪36KD/0°/3m/弹性针
IJDU0530	Torchauto MIG36KD 45°3m euro adaptor/spring pins;自动焊枪36KD/45°/3m/弹性针

## Technical Data

Cooling: Gas Cooled  
 Duty Cycle: 100% 占载率: 100%  
 wire size:  $\Phi$ 0.8-1.2mm

## 技术参数

冷却方式: 气冷  
 300Amp CO<sub>2</sub>, 270Amp MIX  
 焊丝直径:  $\Phi$ 0.8-1.2mm



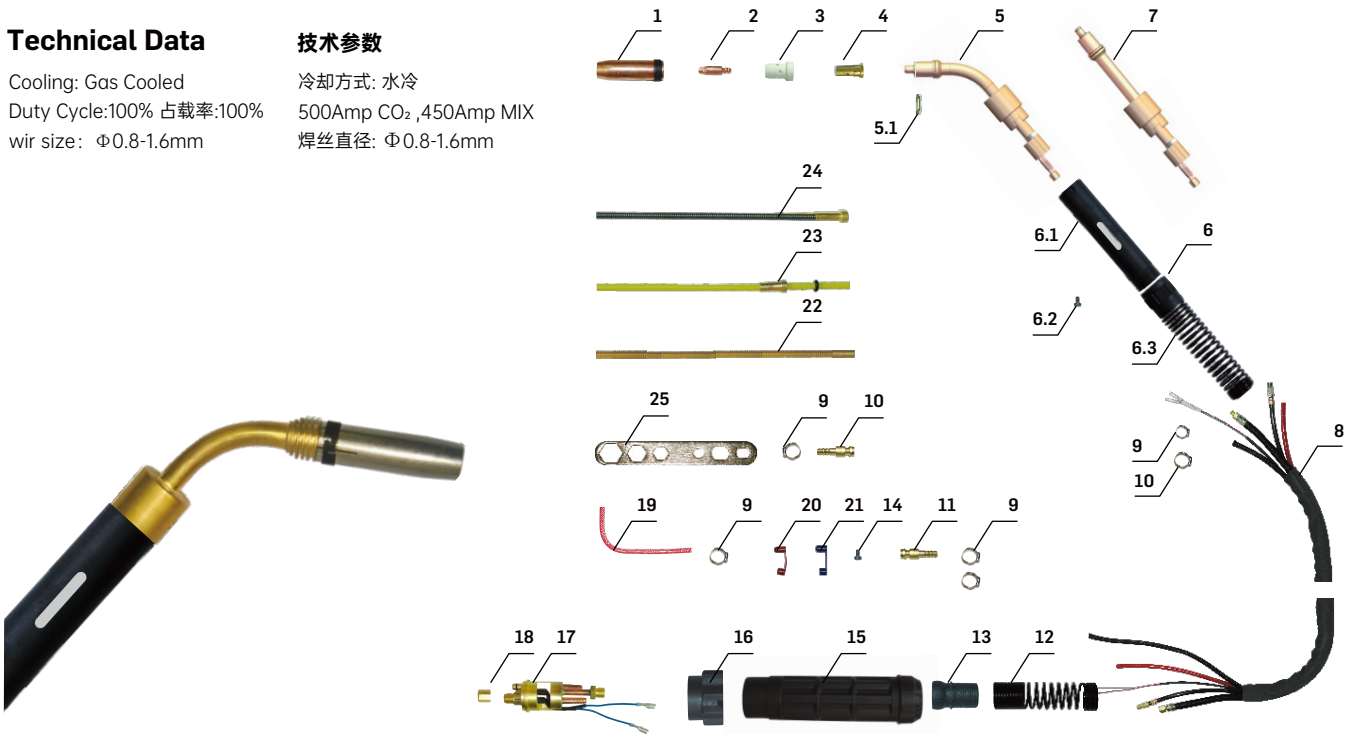
Position	Code	Ref.	Description
1	IJD0817	145.0080	Gas nozzle $\Phi$ 12.5mm; 喷嘴 $\Phi$ 12.5mm
2	IJDV0014-10	140.0253	Contact tip $\Phi$ 1.0mm E-CU/M6X25; 导电嘴 $\Phi$ 1.0mm/M6X25mm
3	IJDV0694	142.0003	Contact tip holder M6X26mm; 导电嘴座 24KD/M6X26mm
4	IJDG0540		White ceramic gas diffuser; 白色陶瓷分流器 24KD
5	IJDJ0047		Torch Head auto 240 45°; 自动枪头 240 45°
6	IJDJ0048		Torch head auto 240 0°; 自动枪头 240 0°
7	IJDW0682		Spring cable support for torch auto; 自动枪用电缆支撑用弹簧
7.1	IJDW0686		Handle for auto MIG torch; 手柄MIG自动枪颈用
7.2	IJGU0070		Screw M4X8; 螺丝 M4X8
7.3	IJGU0809		Spring for cable support; 电缆支撑弹簧
8	IJDE0078		Cable assembly 3m 401D-501D; 水冷电缆组 3m 401D-501D
9	IJGU0745	171.0002	Clamp $\Phi$ 8.7; 卡箍 $\Phi$ 8.7
10	IJGU0748	173.0001	Clamp $\Phi$ 9.5; 卡箍 $\Phi$ 9.5
11	IJAU8081	501.0114	Quick connector water $\Phi$ 6; 水冷快速插头 $\Phi$ 6mm
12	IJGU0881		Spring cable support 401D-501D; 电缆支撑用弹簧 401D-501D
13	IJK0788		Joint for MIG handle; MIG 手柄用球头
14	IJK0726		Handle closing ring; 手柄锁紧环
15	IJK0775		Hose support for water cooled rear box; 水冷枪后把套用水管支柱
16	IJGU0074		Screw M4X6; 螺丝 M4X6
17	IJK0774		Back box for water cooled; 水冷枪后把套
18	IJK0083		Adaptor nut/Blue; 焊枪锁紧螺母/蓝色
19	IJUC0068	501.2156	Euro central adaptor body/water cooling; 欧式水冷中央接头/水冷
20	IJAU0082	501.0082	Liner nut; 送丝管锁紧螺母
21	IJLI0616		Output water tube M5X8mm 0.8m red; EPDM 编织管 M5x8mm 0.8m/红色
22	IJK0317		Plastic support for water cooling connector /red; 水堵/红色
23	IJK0319		Plastic support for water cooling connector /blue; 水堵/蓝色
24	IJJD0231		Brass terminal $\Phi$ 2.0X4.0mm 0.35m; 铜送丝管 $\Phi$ 2.0X4.0mm/0.35m
25	IJJD0171	126.0005	Teflon liner $\Phi$ 2.0X4.0mm 3m Red; 特氟龙管 $\Phi$ 2.0X4.0mm/3m/红色
26	IJJD0582	122.0031	Steel liner $\Phi$ 1.0-1.2mm 3m; 钢送丝管 $\Phi$ 1.0-1.2mm/3m
27	IJDH6011		Spanner for MIG torches; MIG 焊枪扳手
<b>Complete Torch</b>			
	IJDI0180		Torch autoMIG240 0° 3m euro adaptor/spring pins; 自动焊枪240 0°/3m/弹性针
	IJDI0187		Torch autoMIG240 45° 3m euro adaptor/spring pins; 自动焊枪240 45°/3m/弹性针

## Technical Data

Cooling: Gas Cooled  
 Duty Cycle:100% 占载率:100%  
 wir size:  $\Phi$ 0.8-1.6mm

## 技术参数

冷却方式: 水冷  
 500Amp CO<sub>2</sub>, 450Amp MIX  
 焊丝直径:  $\Phi$ 0.8-1.6mm



Position	Code	Ref.	Description
1	IJD0724	145.0085	Gas nozzle $\Phi$ 16mm;喷嘴 $\Phi$ 16mm 401D-501D
2	IJDV0016-12	140.0442	Contact tip $\Phi$ 1.2mmE-CU/M8X30;导电嘴 $\Phi$ 1.2mm/M8X30mm
3	IJDG0535	030.0190	White ceramic gas diffuser;白色陶瓷分流器 401D-501D
4	IJDG0032	142.0022	Contact tip holder M8X25mm;导电嘴座 M8X25mm 401D-501D
5	IJDJ0027		Torch Head auto 501D 45°;自动枪头 501D 45°
5.1	IJA16734	030.0019	Insulator 401D-501D;绝缘垫片 401D-501D
6	IJDW0682		Handle for auto MIG torch;MIG自动枪颈用手柄
6.1	IJDW0686		Handle for auto MIG torch;手柄MIG自动枪颈用
6.2	IJGU0070		Screw M4X8;螺丝 M4X8
6.3	IJGU0809		Spring for cable support;电缆支撑弹簧
7	IJDJ0028		Torch Head auto 501D 0°;自动枪头 501D 0°
8	IJDE0078		Cable assembly 3m 401D-501D;水冷电缆组 3m 401D-501D
9	IJGU0741		Clamp $\Phi$ 8.7;卡箍 $\Phi$ 8.0
10	IJGU0733		Clamp $\Phi$ 9.5;卡箍 $\Phi$ 9.0
11	IJAU8081	501.0114	Quick connector water $\Phi$ 6mm;水冷快速插头 $\Phi$ 6mm
12	IJGU0881		Spring cable support 401D-501D;电缆支撑用弹簧 401D-501D
13	IJK0788		Joint for MIG handle;MIG 手柄用球头
14	IJGU0074		Screw M4X6;螺丝 M4X6
15	IJK0783		Back box for water cooled;水冷枪后把套
16	IJK0081		Adaptor nut;焊枪锁紧螺母
17	IJUC0068	501.2156	Euro central adaptor body/water cooling;欧式水冷中央接头/水冷
18	IJAU0082	501.0082	Liner nut;送丝管锁紧螺母
19	IJLI0616		Output water tube M5X8mm 0.8m red;EPDM 编织管 M5x8mm 0.8m
20	IJK0317		Plastic support for water cooling connector /red;水堵/红色
21	IJK0319		Plastic support for water cooling connector/ blue;水堵/蓝色 /红色
22	IJJD0237		Brass terminal $\Phi$ 3.0X4.5mm 0.35m;铜送丝管 $\Phi$ 3.0X4.5mm/0.35m
23	IJJD0221	126.0039	Teflon liner $\Phi$ 3.0X4.5mm 3m Yellow;特氟龙管 $\Phi$ 3.0X4.5mm/3m/黄色
24	IJJD0591	122.0056	Steel liner $\Phi$ 1.2-1.6mm 3m;钢送丝管 $\Phi$ 1.2-1.6mm/3m
25	IJDH6011		Spanner for MIG torches;MIG 焊枪扳手
<b>Complete Torch</b>			
	IJDI0526		Torch auto MIG501D 0°3m euro adaptor/spring pins;自动焊枪501D 0°/3m/弹性针
	IJDI0522		Torch auto MIG501D 0°4m euro adaptor/spring pins;自动焊枪501D 0°/4m/弹性针
	IJDI0523		Torch auto MIG501D 0° 5m euro adaptor/spring pins;自动焊枪501D 0°/5m/弹性针
	IJDI0528		Torch auto MIG501D 45°3m euro adaptor/spring pins;自动焊枪501D 45°/3m/弹性针
	IJDI0529		Torch auto MIG501D 45°4m euro adaptor/spring pins;自动焊枪501D 45°/4m/弹性针
	IJDI0520		Torch auto MIG501D 45°5m euro adaptor/spring pins;自动焊枪501D 45°/5m/弹性针

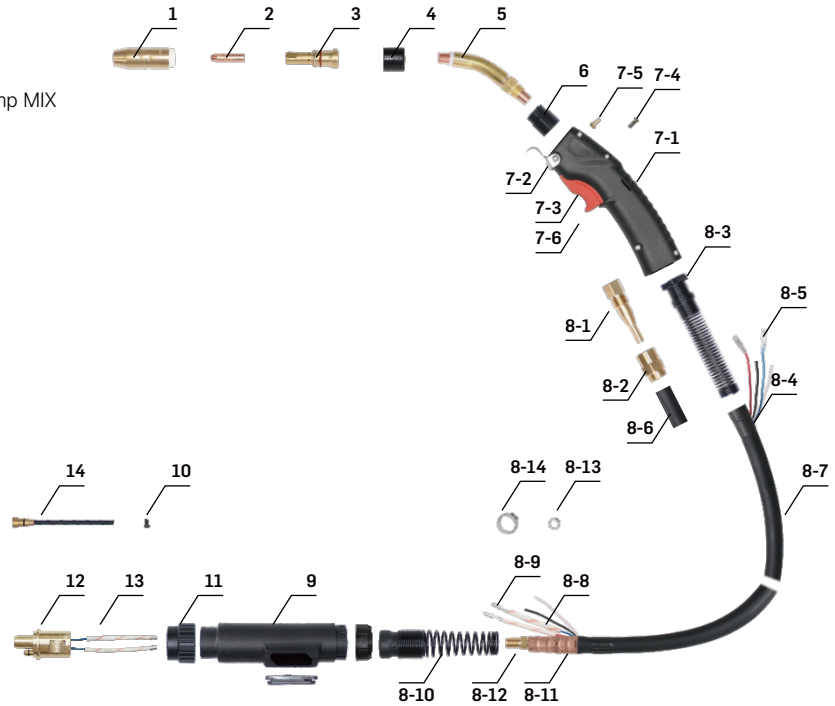


## Technical Data

Cooling: Gas Cooled  
 Duty Cycle: 60% 占载率: 60%  
 wir size:  $\Phi 0.8-1.6\text{mm}$

## 技术参数

冷却方式: 空冷  
 300/350Amp CO<sub>2</sub>, 250/300Amp MIX  
 焊丝直径:  $\Phi 0.8-1.6\text{mm}$



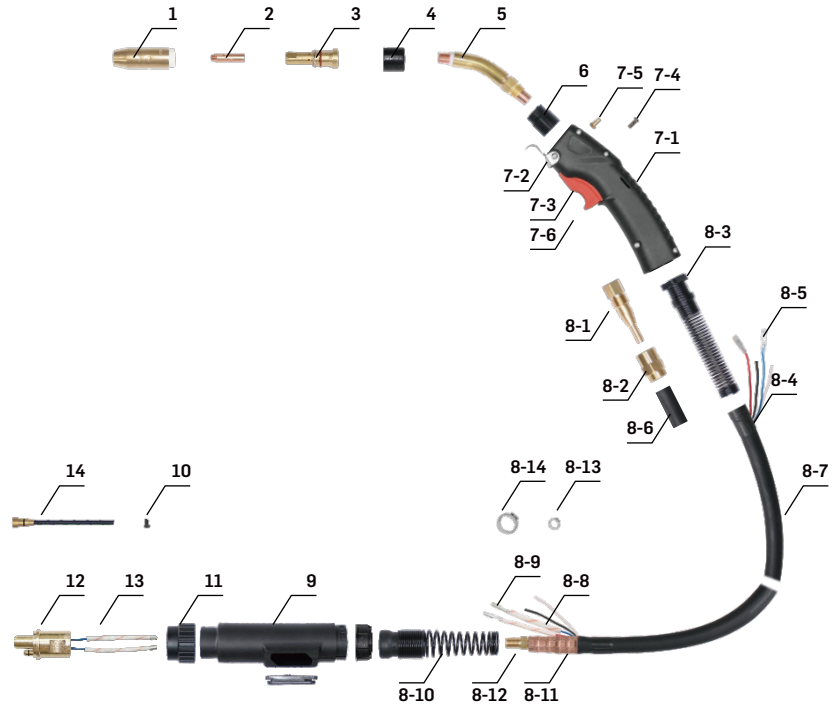
Position	Code	Ref.	Description
1	IJDT0976	4392	NOZZLE D.12,5 BRASS BD 4392;喷嘴 D.12,5 黄铜 BD4392
2	IJDV0776-16	7491	CONTACT TIP D.1,6 BD SERIE 74;导电嘴 D.1,6 BD 74系列
3	IJDG0671	4335	DIFFUSER BD 4335;分流器 BD 4335
4	IJK0056	4323R	INSULATOR TORCHBODY BERNARD;枪颈绝缘圈 BERNARD
5	IJDA0726	QT2-45	TORCHHEAD/QT2/45DEGREE; 枪颈/QT2/45度
6	IJK0047	4780	NECK INSULATOR 4780;枪颈绝缘套 4780
7-1	IJDW0064		HANDLE/BLACK/BND;手柄/黑色/BND
7-2	IJGU0983		HOOK/BND;挂钩/BND
7-3	IJIRO020	5662	TRIGGER FOR BND/5662/YELLOW;BND枪用开关/5662/黄色
7-4	IJGU0627		SCRWE M3.5x0.6-10;螺丝 M3.5x0.6-10
7-5	IJGU0667		NUT M3.5x0.6-11 CH6.3/NICKEL PLATING;镀镍螺母 M3.5x0.6-11 CH6.3
7-6	IJGU0661-01		NUT M3.5x0.6-15 CH6.3/NICKEL PLATING;镀镍螺母 M3.5x0.6-15 CH6.3
8	IJDO0137		COAXIAL CABLE 4.6M/4WIRES;同轴电缆组/4.6米/4芯控制线
8-1	IJUZ6711	4213B	Back Fitting Cable BD4213B;电缆接头 BD4213B
8-2	IJGU0941		MUT/BND;螺母/BND
8-3	IJGU0840		CABLE SUPPOR SPRING/BERNARD300-400;电缆支撑用弹簧/BERNARD300-400
8-4	IJIRO711		Female Trigger Wire Connector;开关控制线接插件(母)
8-5	IJIRO719		INSULATOR FOR CONNECTOR;接插件(母)用塑料绝缘套管
8-6	IJDL0887		Heat shrink tubing;热缩管 $\Phi 25\text{mm}$ /米
8-7	IJDO0387		COAXIAL CABLE 4.6M/4WIRES;同轴电缆/4.6米/4芯控制线
8-8	IJIRO001		INSULATOR TUBE/ $\Phi 3\text{M}$ ;黄蜡管/ $\Phi 30\text{mm}$ /米
8-9	IJIRO751		Preinsulated Male Cylindrical Plug;圆柱状控制线接插件(公)
8-10	IJAI0875		Joint With Spring;带弹簧球节
8-11	IJTH0988		Rings For Cable Clamping D19,3X21,3X42;电缆压接用铜圈 D19,3X21,3X42
8-12	IJUZ0601		BACK FITTING CABLE/BND;电缆接头/BND
8-13	IJGU0740		Clamp $\Phi 11,5\text{mm}$ ;卡箍 $\Phi 11.5\text{mm}$
8-14	IJGU0731		Clamp $\Phi 20\text{mm}$ ;卡箍 $\Phi 20\text{mm}$
9	IJK00724		BACK BOX FOR AIR COOLING;空冷枪后把套
10	IJGU0074		SCREW M4X6 UNI 6107;螺丝 M4X6 UNI 6107
11	IJK0089		Gun Plug Nut/BINZEL TYPE/BRASS SCREW;焊枪锁紧螺母/BINZEL式/铜螺母
12	IJUC0046		ASSEMBLY OF EURO CENTRE ADAPTOR/BND;欧式中央插头组件/BND
13	IJIRO061		INSULATOR TUBE/ $\Phi 5\text{M}$ ;黄蜡管/ $\Phi 5\text{米}$
14	IJJD0006	44215	Liner 4,5 m - 1,2-1,6 mm.(44215);钢送丝管 4,5 m - 1,2-1,6 mm(44215)
<b>Complete Torch</b>			
	IJDU5781		TORCH BND300-350/3.6M/EURO ADAPTOR;焊枪 BND300-350/3.6M/欧式接口
	IJDU5787		TORCH BND300-350/4.6M/EURO ADAPTOR;焊枪 BND300-350/4.6M/欧式接口

## Technical Data

Cooling: Gas Cooled  
 Duty Cycle: 60% 占载率: 60%  
 wire size:  $\Phi 0.9-1.6\text{mm}$

## 技术参数

冷却方式: 空冷  
 400Amp CO<sub>2</sub>, 350Amp MIX  
 焊丝直径:  $\Phi 0.9-1.6\text{mm}$



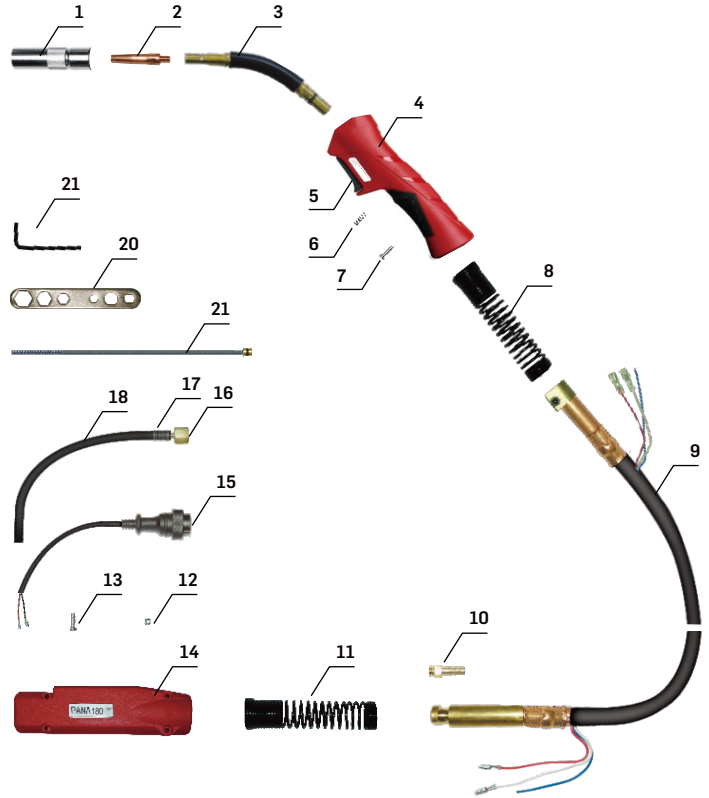
Position	Code	Ref.	Description
1	IJDT0981	4491	NOZZLE D.19 BRASS BD4491;喷嘴 D.19 黄铜 BD4491
2	IJDV0770-16	1591	CONTACT TIP D.1,6 BD SERIE 74;导电嘴 D.1,6 BD 15系列
3	JDG0678	4635	DIFFUSER GASBD 4635;分流器 BD 4635
4	IJK0053	4423	NOZZLE INSULATOR/BERNARD/4423;喷嘴绝缘件/BERNARD/4423
5	IJDA0721	4790	TORCHHEAD/4790;枪头/BND400/4790
6	IJK0047	4780	NECK INSULATOR 4780;枪颈绝缘套 4780
7-1	IJDW0064		HANDLE/BLACK/BND;手柄/黑色/BND
7-2	IJGU0983		HOOK/BND;挂钩/BND
7-3	IJIRO020	5662	TRIGGER FOR BND/5662/YELLOW;BND枪用开关/5662/黄色
7-4	IJGU0627		SCRWE M3.5x0.6-10;螺丝 M3.5x0.6-10
7-5	IJGU0667		NUT M3.5x0.6-11 CH6.3/NICKEL PLATING;镀镍螺母 M3.5x0.6-11 CH6.3
7-6	IJGU0661-01		NUT M3.5x0.6-15 CH6.3/NICKEL PLATING;镀镍螺母 M3.5x0.6-15 CH6.3
8	IJDO0147		COAXIAL CABLE 4.6M/4WIRES;同轴电缆组/4.6米/4芯控制线
8-1	IJUJZ6711	4213B	Back Fitting Cable BD4213B;电缆接头 BD4213B
8-2	IJGU0948		MUT/BND;螺母/BND
8-3	IJGU0840		CABLE SUPPOR SPRING/BERNARD300-400;电缆支撑用弹簧/BERNARD300-400
8-4	IJIRO711		Female Trigger Wire Connector;开关控制线接插件(母)
8-5	IJIRO719		INSULATOR FOR CONNECTOR;接插件(母)用塑料绝缘套管
8-6	IJDL0887		Heat shrink tubing;热缩管 $\Phi 25\text{mm}$ /米
8-7	IJDO0967		COAXIAL CABLE 4.6M/4WIRES;同轴电缆/4.6米/4芯控制线
8-8	IJIRO001		INSULATOR TUBE/ $\Phi 3\text{M}$ ;黄蜡管/ $\Phi 30\text{mm}$ /米
8-9	IJIRO751		Preinsulated Male Cylindrical Plug;圆柱状控制线接插件(公)
8-10	IJAI0875		Joint With Spring;带弹簧球节
8-11	IJTH0988		Rings For Cable Clamping D19,3X21,3X42;电缆压接用铜圈 D19,3X21,3X42
8-12	IJUJZ0601		BACK FITTING CABLE/BND;电缆接头/BND
8-13	IJGU0740		Clamp $\Phi 11,5\text{mm}$ ;卡箍 $\Phi 11.5\text{mm}$
8-14	IJGU0731		Clamp $\Phi 20\text{mm}$ ;卡箍 $\Phi 20\text{mm}$
9	IJK00724		BACK BOX FOR AIR COOLING;空冷枪后把套
10	IJGU0074		SCREW M4X6 UNI 6107;螺丝 M4X6 UNI 6107
11	IJK0089		Gun Plug Nut/BINZEL TYPE/BRASS SCREW;焊枪锁紧螺母/BINZEL式/铜螺母
12	IJUC0046		ASSEMBLY OF EURO CENTRE ADAPTOR/BND;欧式中央插头组件/BND
13	IJIRO061		INSULATOR TUBE/ $\Phi 5\text{M}$ ;黄蜡管/ $\Phi 5\text{米}$
14	IJJD0006	44215	Liner 4,5 m - 1,2-1,6 mm.(44215);钢送丝管 4,5 m - 1,2-1,6 mm(44215)
<b>Complete Torch</b>			
	IJDU5791		TORCH BND400/3.6M/EURO ADAPTOR;焊枪 BND400/3.6M/欧式接口
	IJDU5797		TORCH BND400/4.6M/EURO ADAPTOR;焊枪 BND400/4.6M/欧式接口

## Technical Data

Cooling: Gas Cooled  
 Duty Cycle: 60% 占载率: 60%  
 wire size:  $\Phi$ 0.8-1.2mm

## 技术参数

冷却方式: 气冷  
 200Amp CO<sub>2</sub>, 160Amp MIX  
 焊丝直径:  $\Phi$ 0.8-1.2mm



Position	Code	Ref.	Description
1	IJDT0467	145.0100	Nozzle PAN 180; 喷嘴/日式180
2	IJDV0757-10	140.0242	Contact tip $\Phi$ 1.0 M6x45; 导电嘴 $\Phi$ 1.0 M6x45
3	IJDA0751	142.0001	Torch head PAN 180; 枪颈/日式180
4	IJDW0806-01	004.0012	MIG handle PAN180; MIG手柄/日式180
5	IJIR0197	003.0013	Switch for MIG/PAN; 微动开关/日式枪用
6	IJGU0871	400.0044	Spring for switch/PAN; 弹簧/日式枪微动开关用
7	IJGU0885		Screw M3X10mm; 螺丝 M3X10mm
8	IJGU0836	185.0031	Spring cable support; 电缆支撑用弹簧
9	IJDO0110-01		Coaxial cable assembling /3m/PAN; 同轴电缆组 /3m/日式
10	IJAI7076		Gas connector for MIG torch/PAN; 日式枪后气管接头
11	IJGU0832		Spring cable support/PAN; 电缆支撑用弹簧/日式
12	IJGU0031		Nut M4; 六角螺母 M4
13	IJGU0080		Screw M4x20; 螺丝 M4x20
14	IJIK0704		Back box for PAN torch; 后把套/日式
15	IJIR0760		Connector 2 holes/with connectors/PAN; 两芯航插
16	IJAU9010		Connector with hexagonal nut 9/16-18; 接头带 9/16-18 六角螺母
17	IJGU0814	501.2155	Spring for gas tube; 气管用弹簧
18	IJLI0679	501.0082	EPDM tube 5x10 300mm; EPDM管 5x10 300mm
19	IJJD0562		Insulated steel liner 0.8-1.0 3.1m Black PAN 180; 带绝缘层送丝管 0.8-1.0 3.1m/黑色/日式180
20	IJDH6011	126.0021	Spanner for MIG torches; MIG 焊枪扳手
21	IJDH6018	124.0026	Spanner for PAN torch; 日式枪用六角扳手

## Complete Torch

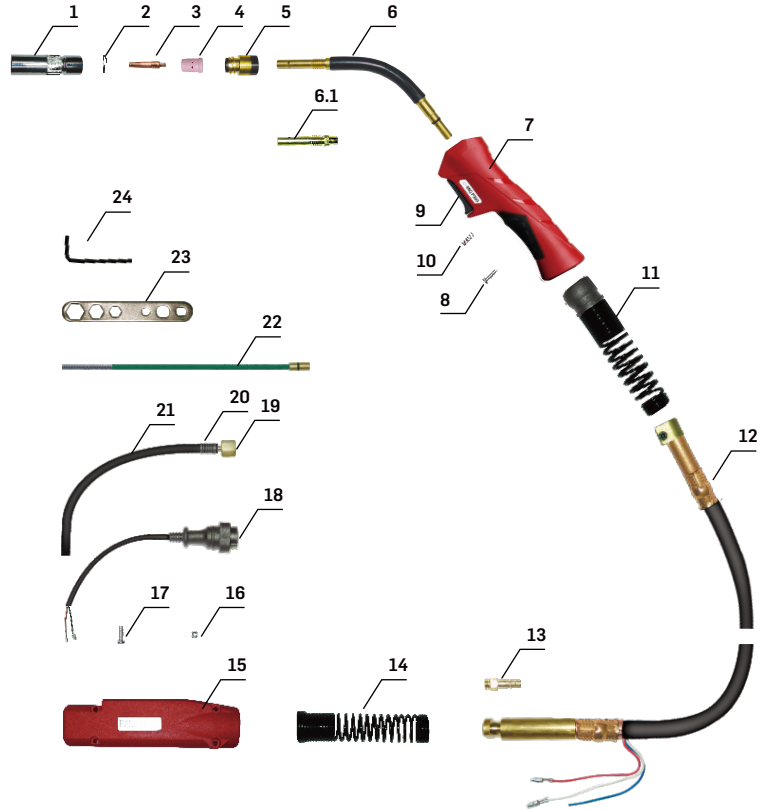
JDU6542-36	MIG 180 torch 3m PAN; 焊枪180 3m 日式
JDU6543-36	MIG 180 torch 4m PAN; 焊枪180 4m 日式
JDU6544-36	MIG 180 torch 5m PAN; 焊枪180 5m 日式

## Technical Data

Cooling: Gas Cooled  
 Duty Cycle: 60% 占载率: 60%  
 wir size:  $\Phi$ 0.8-1.6mm

## 技术参数

冷却方式: 气冷  
 340Amp CO<sub>2</sub>, 320Amp MIX  
 焊丝直径:  $\Phi$ 0.8-1.6mm



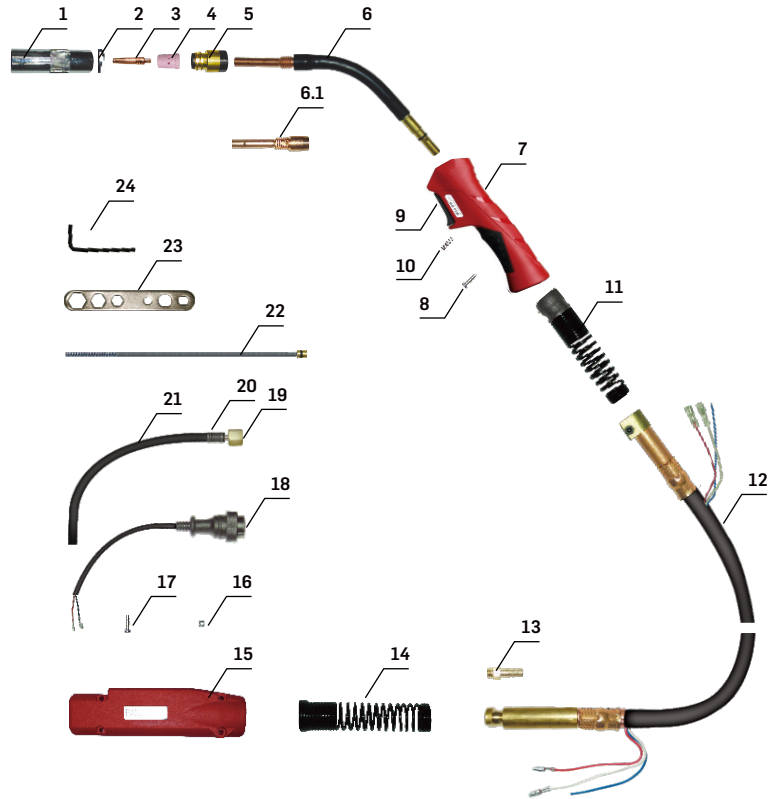
Position	Code	Ref.	Description
1	IJDT0407		Nozzle P350;喷嘴 日式350
2	IJGU0679		Grower M21mm;发黑弹垫 M21mm
3	IJDV0757-10		Contact tip $\Phi$ 1.0mm E-CU M6X45;导电嘴 $\Phi$ 1.0mm E-CU M6X45mm
4	IJDG0987		Ceramic diffuser P350;陶瓷分流器 日式350
5	IJDT6610		Insulator P350;绝缘筒 日式350
6	IJDA0750		Torch head P350;枪颈 日式350
6.1	IJDG0982		Torch head front part P350;枪颈前段 日式350
7	IJDW0861-01		MIG handle P350/500;MIG手柄 日式350/500
8	IJGU0885		Screw M3X10mm;螺丝 M3X10mm
9	IJIR0197		Nut M4;六角螺母 M4
10	IJGU0871		Switch for MIG/PAN;微动开关/日式枪用
11	IJAI0875		Spring for switch/PAN;弹簧/日式枪微动开关用
12	IJDO0199-01		Joint with spring;带弹簧球节
13	IJAI7076		Spring cable support;电缆支撑用弹簧/日式
14	IJGU0832		Coaxial cable 3m;同轴电缆组/3m
15	IJIK0704		Gas connector for MIG torch/PAN;气管接头/日式
16	IJGU0031		Back box;后把套/日式
17	IJGU0080		Screw M4X22mm;螺丝 M4X22mm
18	IJIR0760		Connector 2 holes;两芯航插/日式/带控制线接头
19	IJAU9010		Connector with hexagonal nut 9/16-18;接头9/16-18六角螺母
20	IJGU0814		Spring for gas tube;气管用弹簧
21	IJLI0679		EPDM tube $\Phi$ 5x10mm 300mm;EPDM管 $\Phi$ 5x10mm 300mm
22	IJJD0521		Green steel liner $\Phi$ 1.0-1.2mm 3m;带绝缘层送丝管 $\Phi$ 1.0-1.2mm/3m/绿色
23	IJDH6011		Spanner for MIG torches;MIG 焊枪扳手
24	IJDH6018		Spanner for PAN torch;日式枪用六角扳手
<b>Complete Torch</b>			
	IJDU6241-36		MIG P350 torch 3m PAN;焊枪350 3m 日式
	IJDU6247-36		MIG P350 torch 4m PAN;焊枪350 4m 日式
	IJDU6248-36		MIG P350 torch 5m PAN;焊枪350 5m 日式

## Technical Data

Cooling: Gas Cooled  
 Duty Cycle: 35% 占载率: 35%  
 wire size:  $\Phi$ 0.8-1.6mm

## 技术参数

冷却方式: 气冷  
 500Amp CO<sub>2</sub>, 450Amp MIX  
 焊丝直径:  $\Phi$ 0.8-1.6mm



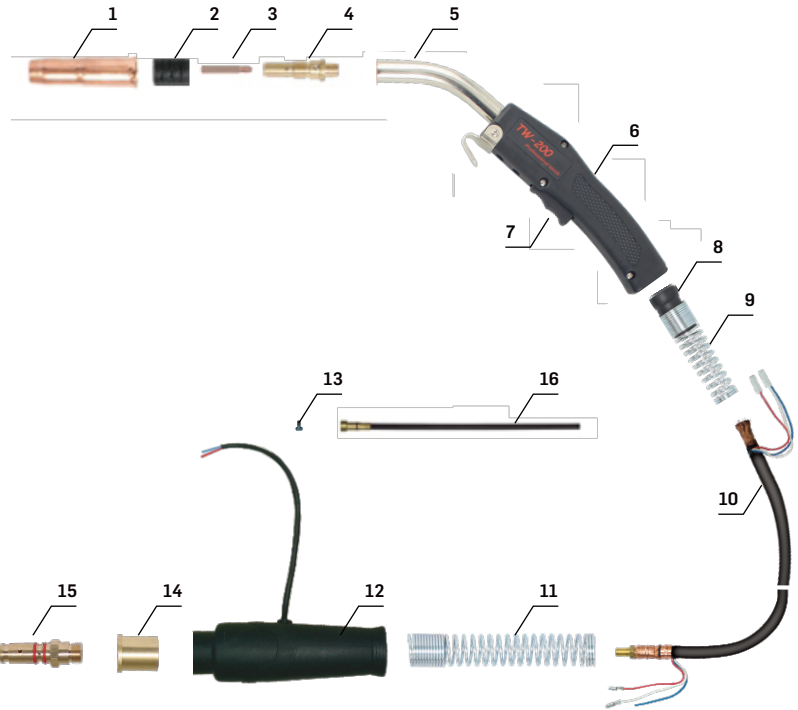
Position	Code	Ref.	Description
1	IJDT0468		Nozzle P500;喷嘴/日式 500
2	IJGU0670		Grower M25mm;发黑弹垫 M25mm
3	IJDV0757-12		Contact tip $\Phi$ 1.2mmE-CU/M6X45;导电嘴 $\Phi$ 1.2mm/M6X45mm
4	IJDG0989		Ceramic diffuser P500;陶瓷分流器 日式 500
5	IJDT6614		Insulator P500;绝缘筒/日式 500
6	IJDA0758		Torch head P500;日式500 枪颈
6.1	IJDG0986		Torch head front part P500;枪颈前段 日式500
7	IJDW0861-01		MIG handle P350/500;MIG手柄 日式350/500
8	IJGU0885		Screw M3X10mm;螺丝 M3X10mm
9	IJIR0197		Switch for MIG/PAN;微动开关/日式枪用
10	IJGU0871		Spring for switch/PAN;弹簧/日式枪微动开关用
11	IJAI0875		Joint with spring;带弹簧球节
12	IJDO0191-01		Coaxial cable 3m;同轴电缆组/3m
13	IJAI7076		Gas connector for MIG torch/PAN;气管接头/日式
14	IJGU0832		Spring cable support;电缆支撑用弹簧/日式
15	IJIK0704		Back box;后把套/日式
16	IJGU0031		Nut M4;六角螺母 M4
17	IJGU0080		Screw M4X22mm;螺丝 M4X22mm
18	IJIR0760		Connector 2 holes;两芯航插
19	IJAU9010		Connector with hexagon nut 9/16-18;接头9/16-18六角螺母
20	IJGU0814		Spring for gas tube;气管用弹簧
21	IJLI0679		EPDM tube $\Phi$ 5 $\times$ 10mm 300mm;EPDM管 $\Phi$ 5 $\times$ 10mm 300mm
22	IJJD0529		Black steel liner $\Phi$ 1.2-1.6mm 3m;带绝缘层送丝管 $\Phi$ 1.2-1.6mm/3m/黑色
23	IJDH6011	191.0001	Spanner for MIG torches;MIG 焊枪扳手
24	IJDH6018		Spanner for PAN torch;日式枪用六角扳手
<b>Complete Torch</b>			
	IJDU6251-36		MIG P500 torch 3m PAN;焊枪500 3m 日式
	IJDU6257-36		MIG P500 torch 4m PAN;焊枪500 4m 日式
	IJDU6258-36		MIG P500 torch 5m PAN;焊枪500 5m 日式

## Technical Data

Cooling: Gas Cooled  
 Duty Cycle: 60% 占载率: 60%  
 wire size:  $\Phi$ 0.6-1.2mm

## 技术参数

冷却方式: 气冷  
 200Amp CO<sub>2</sub>, 150Amp MIX  
 焊丝直径:  $\Phi$ 0.6-1.2mm



Position	Code	Ref.	Description
1	IJDT0790	22-50	Gas nozzle $\Phi$ 12.7; 喷嘴 $\Phi$ 12.7mm
2	IJDL0691	32	Insulator ; 绝缘筒
3	IJDV0019-09	14-35	Contact tip 0.035"; 导电嘴 0.035"
4	IJDG0088	52	Diffuser ; 分流器
5	IJDA0602-02	62J-45	Torch head 45GR/62J-45/Nickel-Plated outer tube /With fitting 枪颈 45GR/62J-45/镀镍外管/带接头
6	IJDW0703	83	MIG handle with screw; MIG手柄带螺丝
7	IJIR0074	81	Trigger switch assembly; 开关套件
8	IJIK0798		Joint for TW1-4; 手柄用球头/TW1-4
9	IJGU0801-01		Spring for cable support/Zin/TW; 电缆支撑用弹簧/镀白锌/TW
10	IJDO0709-300		Cable assembly/3M; 电缆组/3米
11	IJGU0835-01		Spring for cable support/Blue and white zinc plating; 电缆支撑用弹簧/镀蓝白锌
12	IJIK0607		Back box with closing ring; 后把套/含锁紧环
13	IJGU0074	EA0018	Screw M4x6; 螺丝 M4x6
14	IJAI7062		Continental adapter / Miller M10X1; 欧式转换接头/米勒 M 10X 1
15	IJUP0003		Connetcing adaptor TW1-4; 转接头连杆/TW1-4
16	IJJD0078-06		Steel liner 11' 0.030"-0.035"; 钢送丝管 11' 0.030"-0.035"

## Complete Torch

IJDU5711		TW2 Torch 3m; TW2枪 3m
IJDU5717		TW2 Torch 4m; TW2枪 4m
IJDU5718		TW2 Torch 4.6m; TW2枪 4.6m
IJDU5726		TW2 Torch 3m euro adaptor; TW2枪 3m/欧式中央插头
IJDU5722		TW2 Torch 4m euro adaptor; TW2枪 4m/欧式中央插头
IJDU5723		TW2 Torch 4.6m euro adaptor; TW2枪 4.6m/欧式中央插头
IJDU5724	M210-3035	TW2 Torch 3m Miller adaptor; TW2枪 3m 米勒后接口
IJDU5725	M212-3035	TW2 Torch 4m Miller adaptor; TW2枪 4m 米勒后接口
IJDU5731	M215-3035	TW2 Torch 4.6m Miller adaptor; TW2枪 4.6m 米勒后接口

## Technical Data

Cooling: Gas Cooled  
 Duty Cycle: 60% 占载率: 60%  
 wir size:  $\Phi$ 0.8-1.6mm

## 技术参数

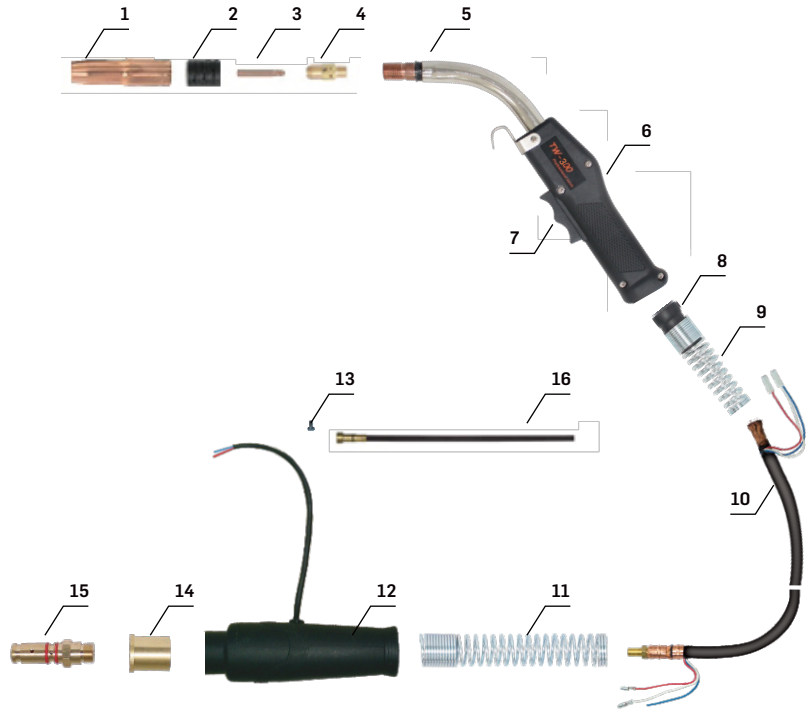
冷却方式: 气冷  
 300Amp CO<sub>2</sub>, 250Amp MIX  
 焊丝直径:  $\Phi$ 0.8-1.6mm



Euro



Miller



Position	Code	Ref.	Description
1	IJDT0602	24A-62	Gas nozzle $\Phi$ 16; 喷嘴 $\Phi$ 16mm
2	IJDL0697	34A	Insulator; 绝缘筒
3	IJDV0019-12	14-45	Contact tip 0.045"; 导电嘴 0.045"
4	IJDG0081	54A	Diffuser ; 分流器
5	IJDA0605-01	63J-45	Conductor tube 45°; 枪颈 45°
6	IJDW0703	83	MIG handle with screw; MIG手柄带螺丝
7	IJIR0074		Trigger Kit; 开关套件
8	IJIK0798		JOINT FOR TW1-4; 手柄用球头/TW1-4
9	IJGU0801-01		Spring for cable support/Zin/TW; 电缆支撑用弹簧/镀白锌/TW
10	IJD000911		Cable assembly/3M; 电缆组/3米
11	IJGU0835		Spring for cable support/Blue and white zinc plating; 电缆支撑用弹簧/镀蓝白锌
12	IJIK0883		Back box with closing ring; 后把套/含锁紧环
13	IJGU0074	EA0018	Screw M4x6; 螺丝 M4x6
14	IJAI7062		Continental adapter / Miller M10X1; 欧式转换接头/米勒 M 10X 1
15	IJUO0003		Connetcing adaptor TW1-4; 转接头连杆/TW1-4
16	IJJD0078-06		Steel liner 11' 0.030"-0.035"; 钢送丝管 11' 0.030"-0.035"

## Complete Torch

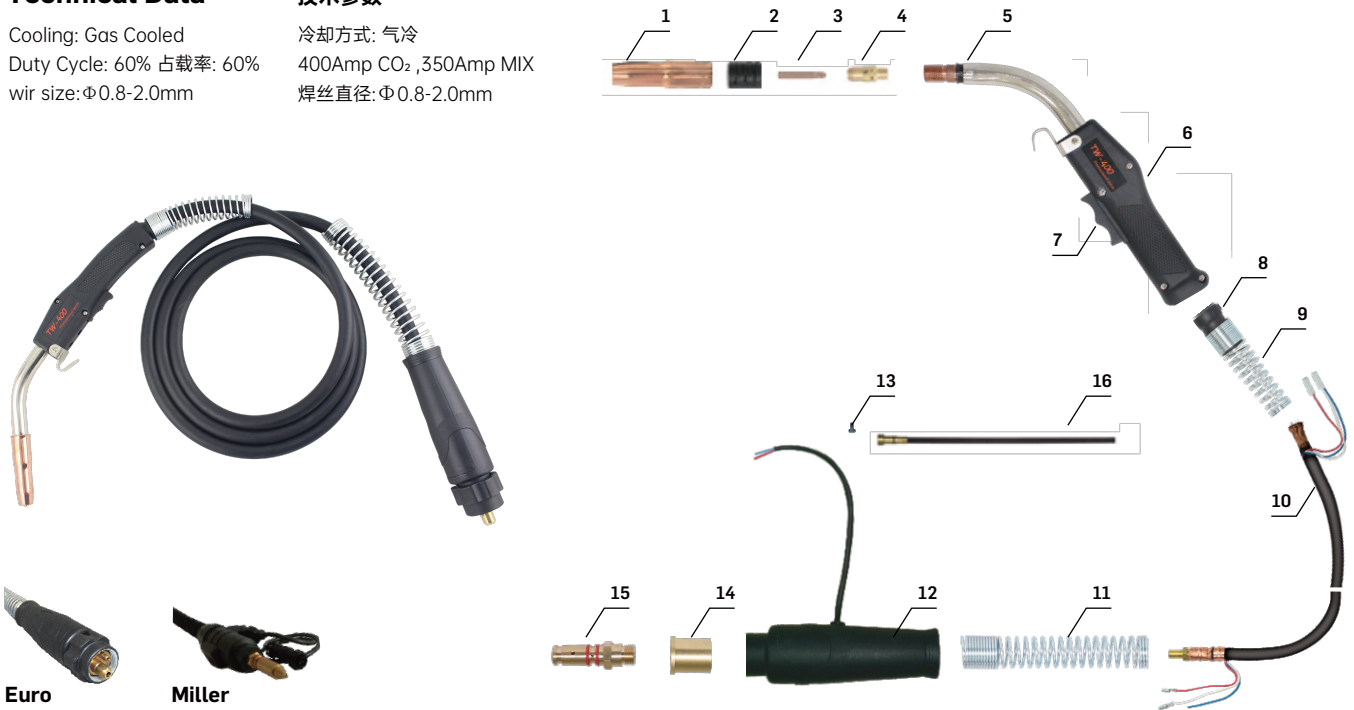
IJDU5811	310-3545	TW3 Torch 3m; TW3枪 3m
IJDU5817	312-3545	TW3 Torch 4m; TW3枪 4m
IJDU5818	315-3545	TW3 Torch 4.6m; TW3枪 4.6m
IJDU5826	X310-3545	TW3 Torch 3m euro adaptor; TW3枪 3m 欧式中央插头
IJDU5822	X312-3545	TW3 Torch 4m euro adaptor; TW3枪 4m 欧式中央插头
IJDU5823		TW3 Torch 4.6m euro adaptor; TW3枪 4.6m 欧式中央插头
IJDU5824	M310-3545	Tw3 Torch 3m Miller adaptor; TW3枪 3m 米勒后接口
IJDU5825	M312-3545	Tw3 Torch 4m Miller adaptor; TW3枪 4m 米勒后接口
IJDU5831	M315-3545	Tw3 Torch 4.6m Miller adaptor; TW3枪 4.6m 米勒后接口

## Technical Data

Cooling: Gas Cooled  
 Duty Cycle: 60% 占载率: 60%  
 wir size:  $\Phi$ 0.8-2.0mm

## 技术参数

冷却方式: 气冷  
 400Amp CO<sub>2</sub>, 350Amp MIX  
 焊丝直径:  $\Phi$ 0.8-2.0mm



Euro

Miller

Position	Code	Ref.	Description
1	IJDT0602	24A-62	Gas nozzle $\Phi$ 16 ;喷嘴 $\Phi$ 16mm
2	IJDL0697	34A	Insulator ;绝缘筒
3	IJDV0010-12	14-116	Contact tip 1.2/ 1/4-28X37.4;导电嘴 1.2/ 1/4-28X37.4
4	IJDG0081	54A	Diffuser ;分流器
5	IJDA0600-01		5 Torch head 60GR/TW4/64J-60/Nickel-plated outer tube;枪颈 60GR/TW4/64J-60/镀镍外管
6	IJDW0704	84A	MIG handle with screw;MIG手柄带螺丝
7	IJIR0092		7 Trigger Kit/TW;开关套件/TW
8	IJIK0788		Joint for MIG handle;MIG 手柄用球头
9	IJGU0887-02		Spring for cable support/Zin/Long/TW;电缆支撑用弹簧/镀锌/加长/TW
10	IJDO0919		Cable assembly/3M;电缆组/3米
11	IJGU0835		Spring for cable support/Blue and white zinc plating;电缆支撑用弹簧/镀蓝白锌
12	IJIK0883		Back box with closing ring;后把套/含锁紧环
13	IJGU0074	EA0018	Screw M4x6;螺丝 M4x6
14	IJAI7062		Continental adapter / Miller M10X1; 欧式转换接头/ 勒囡M10X1
15	IJUP0003		Connetcing adaptor TW1-4;转接头连杆/TW1-4
16	IJJD0010-03		Steel liner 3.4M 0.9-1.2/TW;钢送丝管 3.4米 0.9-1.2/TW
<b>Complete Torch</b>			
	IJDU5911	410-3545	TW4 Torch 3m;TW4枪 3m
	IJDU5917	412-3545	TW4 Torch 4m;TW4枪 4m
	IJDU5918	415-3545	TW4 Torch 4.6m;TW4枪 4.6m
	IJDU5926	X410-3545	TW4 Torch 3m euro adaptor;TW4枪 3m 欧式中央插头
	IJDU5922	X412-3545	TW4 Torch 4.6m euro adaptor;TW4枪 4.6m 欧式中央插头
	IJDU5923	X415-3545	TW4 Torch 3m Miller adaptor;TW4枪 3m 米勒后接口
	IJDU5924	M410-3545	TW4 Torch 4m Miller adaptor;TW4枪 4m 米勒后接口
	IJDU5925	M412-3545	TW4 Torch 4.6m Miller adaptor;TW4枪 4.6m 米勒后接口
	IJDU5931	M415-3545	TW4 Torch 4m euro adaptor;TW4枪 4m 欧式中央插头

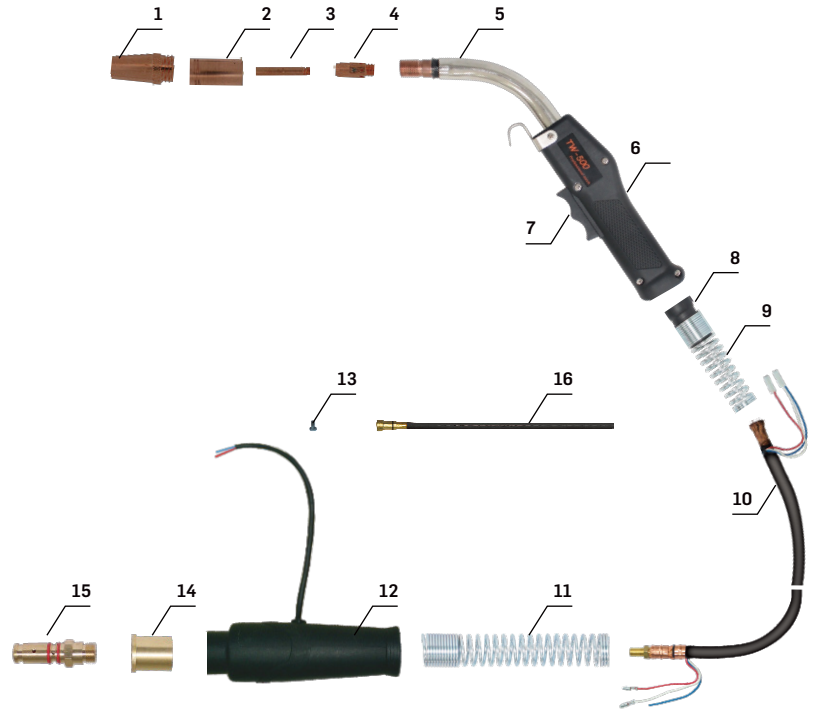


## Technical Data

Cooling: Gas Cooled  
 Duty Cycle: 60% 占载率: 60%  
 wir size:  $\Phi$ 0.9-2.0mm

## 技术参数

冷却方式: 气冷  
 500Amp CO<sub>2</sub>, 400Amp MIX  
 焊丝直径:  $\Phi$ 0.9-2.0mm



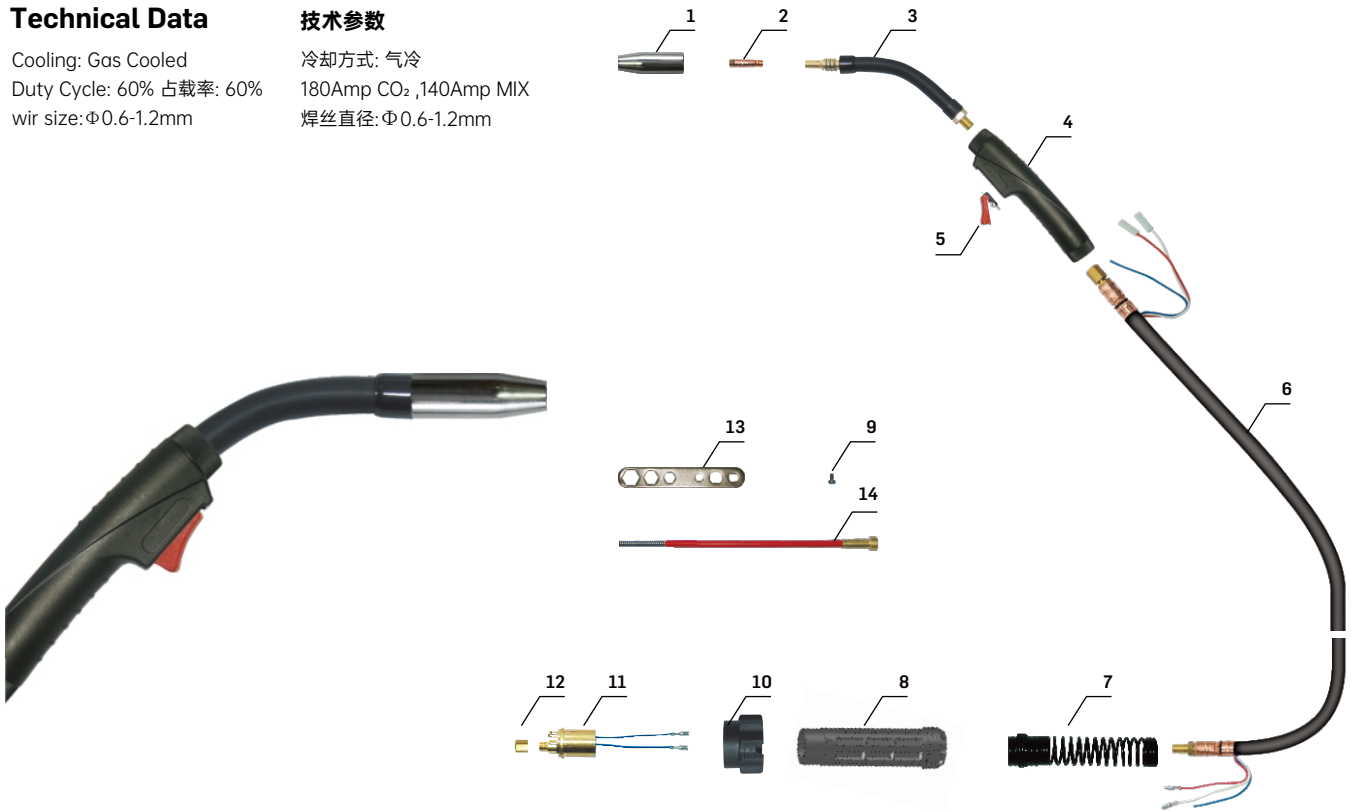
Position	Code	Ref.	Description
1	IJDT0748	25CT62	Gas nozzle $\Phi$ 16; 喷嘴 $\Phi$ 16mm
2	IJDT0749	35CT	Insulator; 绝缘筒
3	IJDV0019-16	14-116	Contact tip 1/16"; 导电嘴 1/16"
4	IJDG0087	55	Diffuser; 分流器
5	IJDA0097-01	65J-60	Conductor tube 60°; 枪颈 60°
6	IJDW0765	85	MIG handle with screw; MIG手柄带螺丝
7	IJIR0092	94R	Trigger Kit/TW; 开关套件/TW
8	IJIK0788		Joint for MIG handle; MIG手柄用球头
9	IJGU0887-02		Spring for cable support/Zin/Long/TW; 电缆支撑用弹簧/镀锌/加长/TW
10	IJD00705		Cable assembly/3M; 电缆组/3米
11	IJGU0835		Spring for cable support/Blue and white zinc plating; 电缆支撑用弹簧/镀蓝白锌
12	IJIK0883		Back box with closing ring; 后把套/含锁紧环
13	IJGU0074	EA0018	Screw M4x6; 螺丝 M4x6
14	IJAI7062		Continental adapter / Miller M10X1; 欧式转换接头/ 勒囡M10X1
15	IJUP0003		Connetcing adaptor TW1-4; 转接头连杆/TW1-4
16	IJJD0010-03		Steel liner 3.4M 0.9-1.2/TW; 钢送丝管 3.4米 0.9-1.2/TW
<b>Complete Torch</b>			
	IJDU5511		TW5 Torch 3m; TW5枪 3m
	IJDU5517		Tw5 Torch 4m; TW5枪 4m
	IJDU5518	515-116	Tw5 Torch 4.6m; TW5枪 4.6m
	IJDU5526		Tw5 Torch 3m euro adaptor; TW5枪 3m 欧式中央插头
	IJDU5522		Tw5 Torch 4m euro adaptor; TW5枪 4m 欧式中央插头
	IJDU5523		Tw5 Torch 4.6m euro adaptor; TW5枪 4.6m 欧式中央插头
	IJDU5524	X515-116	TW5 Torch 3m Miller adaptor; TW5枪 3m 米勒后接口
	IJDU5525	M515-116	TW5 Torch 4m Miller adaptor; TW5枪 4m 米勒后接口
	IJDU5531		TW5 Torch 4.6m Miller adaptor; TW5枪 4.6m 米勒后接口

## Technical Data

Cooling: Gas Cooled  
 Duty Cycle: 60% 占载率: 60%  
 wire size:  $\Phi 0.6-1.2\text{mm}$

## 技术参数

冷却方式: 气冷  
 180Amp CO<sub>2</sub>, 140Amp MIX  
 焊丝直径:  $\Phi 0.6-1.2\text{mm}$



Position	Code	Ref.	Description
1	IJDT0012	MC0006	Gas Nozzle $\Phi 14$ ;喷嘴 $\Phi 14$
2	IJDV0014-08	MD0008-08	Contact tip $\Phi 0.8$ ;导电嘴 $\Phi 0.8$
3	IJDA0018	MF0002	Torch head;枪颈
4	IJDW0068	MP0052	Handle;手柄
5	IJIR0081	BX0020	Trigger;焊枪用开关
6	IJDO0871	MH0310	Coaxial cable ;电缆组
7	IJGU0808	EA0342	Spring cable support;支撑弹簧
8	IJK0656	BW0195	Back box;后把套
9	IJGU0074	EA0018	Screw;螺丝
10	IJK0074	BW0018	Adaptor nut;焊枪锁紧螺母
11	IJUC0049	AR0083	Central adaptor TW/Euro M12x1/Spring pins;中央接头 TW/Euro M12x1/弹性针
12	IJAU0083	FA0027	Liner nut M11x1;送丝管锁紧螺母 M11x1
13	IJJD0077-03		Steel liner 3.4m 0.8-1.0mm;送丝管 3.4m 0.8-1.0mm
14	IJDH6011		Spanner for MIG;MIG 焊枪扳手

## Complete Torch

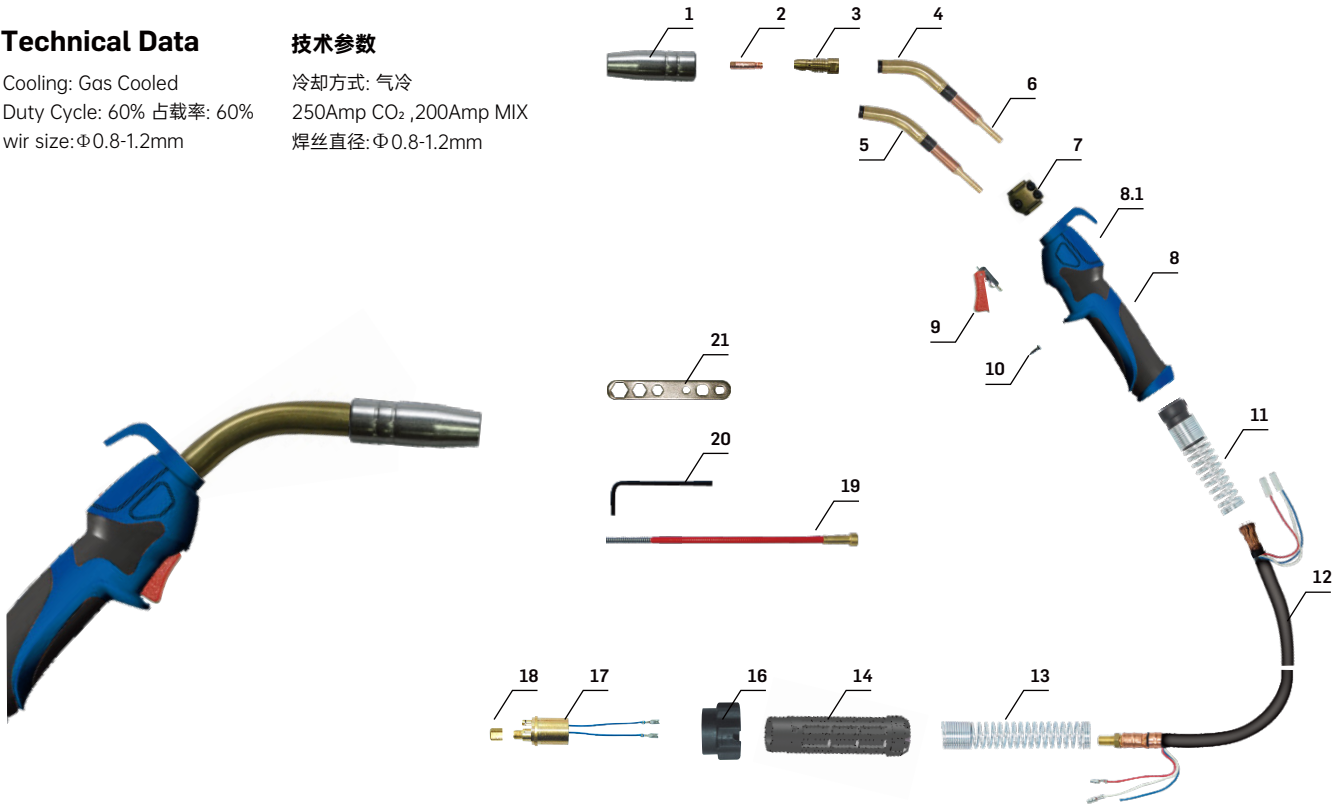
IJDU1626	MIG MAX150 torch 3m Euro/TW with spring pins;焊枪 MAX150/3m/弹性针/欧式
IJDU1622	MIG MAX150 torch 4m Euro/TW with spring pins;焊枪 MAX150/4m/弹性针/欧式
IJDU1623	MIG MAX150 torch 4.6m Euro/TW with spring pins;焊枪 MAX150/4.6m/弹性针/欧式

## Technical Data

Cooling: Gas Cooled  
 Duty Cycle: 60% 占载率: 60%  
 wire size:  $\Phi$ 0.8-1.2mm

## 技术参数

冷却方式: 气冷  
 250Amp CO<sub>2</sub>, 200Amp MIX  
 焊丝直径:  $\Phi$ 0.8-1.2mm



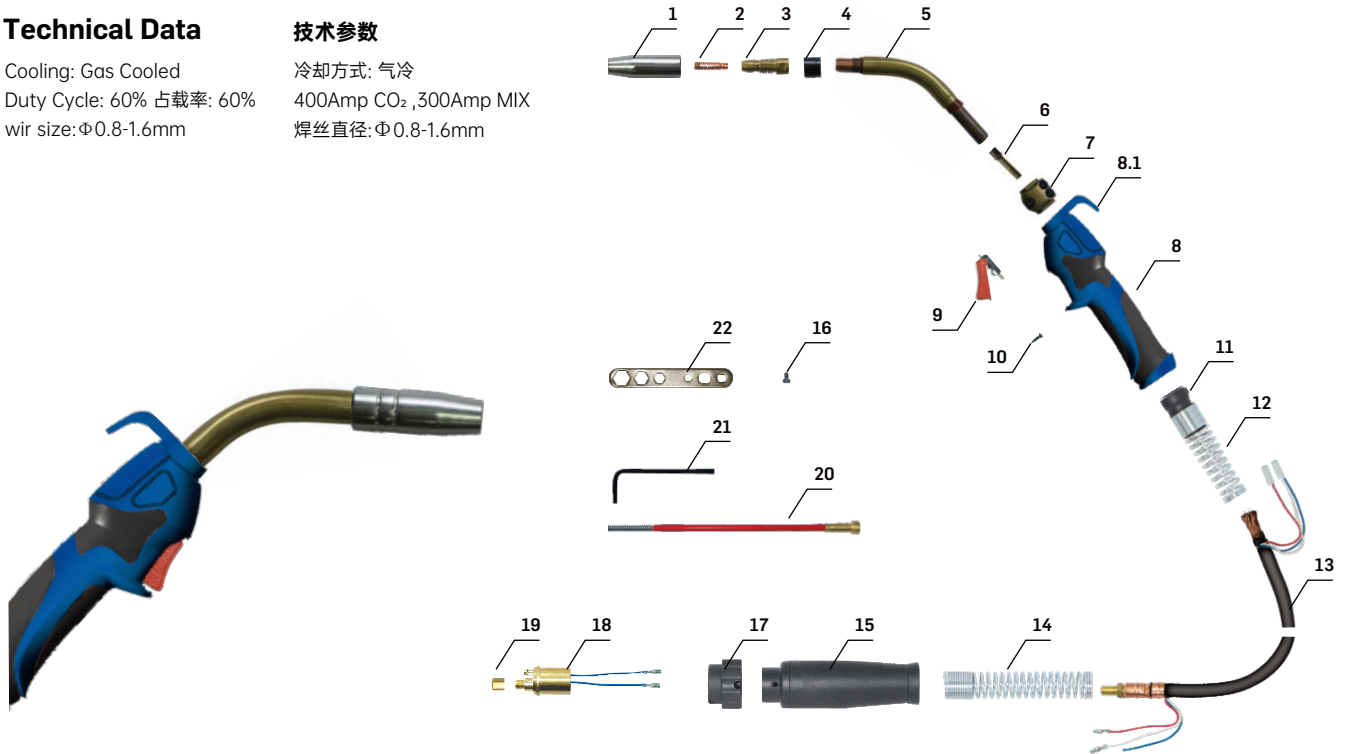
Position	Code	Ref.	Description
1	IJDT0684	MC0128	Gas Nozzle $\Phi$ 16 ;喷嘴 $\Phi$ 16
2	IJDV0019-10	MD0003-10	Contact tip $\Phi$ 1.0;导电嘴 $\Phi$ 1.0
3	IJDG0017	ME0001	Gas diffuser ;分流器
4	IJDA0630		Torch head 45°;枪颈 45°
5	IJDA0639		Torch head 60°;枪颈 60°
6	IJUZ0083	AU0027	Gas Hose Nipple;接头
7	IJDH0031	MT0070	Adjusting Block Kit Clamp;定位块
8	IJDW0866-01		Handle;手柄
8.1	IJK0683		Hanger for handle MAXI250 $\Phi$ 16;MAXI 手柄用挂钩MAXI250 $\Phi$ 16
9	IJIR0081	BX0020	Trigger;焊枪用开关
10	IJGU0885		Screw 3.0x10;螺丝 3.0x10
11	IJK0788	BW0319	Joint with spring;带弹簧球节
12	IJDO0709	MH0243	Coaxial cable 3m;电缆组 3m
13	IJGU0808-01	EA0342	Spring cable Support;支撑弹簧
14	IJK0656	BW0195	Back box;后把套
15	IJGU0074	EA0018	Screw M4x6;螺丝 M4x6
16	IJK0081	BW0020	Gun plug nut;焊枪锁紧螺母
17	IJUC0049	AR0083	Central adaptor TW/Euro M12x1/Spring pins;中央接头 TW/Euro M12x1/弹性针
18	IJAU0083	FA0027	Liner nut M11x1;送丝管锁紧螺母 M11x1
19	IJJD0078-06		Steel line 3.0m 0.8-0.9mm;送丝管 3.0m 0.8-0.9mm
20	IJDH6018		Spanner for Pan torch;日式枪用六角扳手
21	IJDH6011		Spanner for MIG;MIG 焊枪扳手
<b>Complete Torch</b>			
	IJDU1726-36	MA6265	MIG MAXI 250 torch 3m with spring pins;焊枪 MAXI 250/3m/弹性针
	IJDU1722-36	MA6266	MIG MAXI 250 torch 4m with spring pins;焊枪 MAXI 250/4m/弹性针
	IJDU1723-36	MA6267	MIG MAXI 250 torch 5m with spring pins;焊枪 MAXI 250/5m/弹性针

## Technical Data

Cooling: Gas Cooled  
 Duty Cycle: 60% 占载率: 60%  
 wire size:  $\Phi 0.8-1.6\text{mm}$

## 技术参数

冷却方式: 气冷  
 400Amp CO<sub>2</sub>, 300Amp MIX  
 焊丝直径:  $\Phi 0.8-1.6\text{mm}$



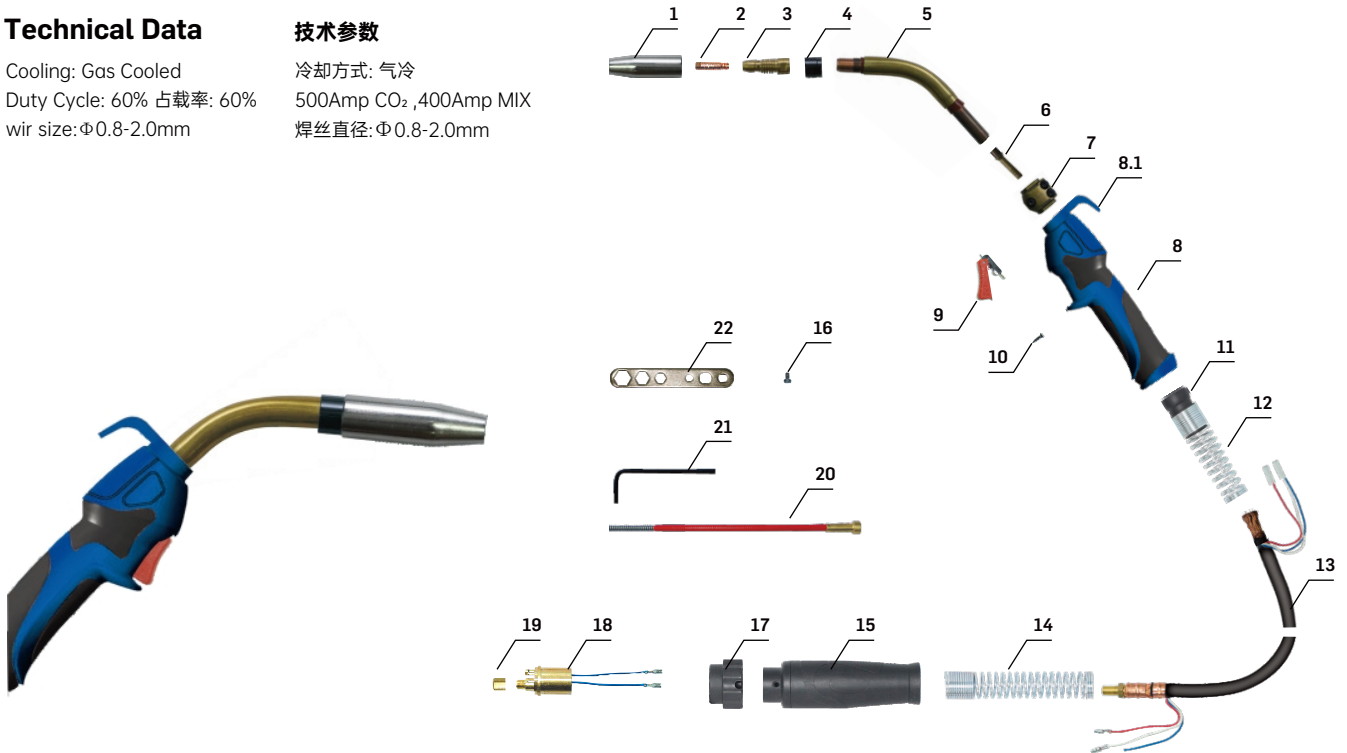
Position	Code	Ref.	Description
1	IJDT0078	MC0012	Gas Nozzle $\Phi 18$ ; 喷嘴 $\Phi 18$
2	IJDV0010-12	MD0004-12	Contact tip $\Phi 1.2$ ; 导电嘴 $\Phi 1.2$
3	IJDG0019	ME0003	Gas diffuser; 分流器
4	IJDL0648	MQ0182	Insulator for Torch head; 绝缘环
5	IJDA0703	MF0247	Torch head ; 枪颈
6	IJUZ0695	AU0028	Back fitting coaxial cable ; 电缆接头
7	IJDH0038	MT0072	Adjusting Block Kit Clamp; 定位块
8	IJDW0866-01		Handle; 手柄
8.1	IJK0681		Hanger for handle $\Phi 18$ ; MAXI 手柄用挂钩 $\Phi 18$
9	IJRO081	BX0020	Trigger; 焊枪用开关
10	IJGU0885		Screw 3.0x10; 螺丝 3.0x10
11	IJK0788	BW0222	Joint for MIG handle; MIG手柄用球头
12	IJGU0887-01		Spring for cable support/Blue and white zinc plating; 电缆支撑用弹簧/镀蓝白锌
13	IJD0702	MH0246	Coaxial cable 3m; 电缆组 3m
14	IJGU0835		Spring for cable support/Blue and white zinc plating; 电缆支撑用弹簧/镀蓝白锌
15	IJK0883		Back box with closing ring; 后把套/含锁紧环
16	IJGU0074	EA0018	Screw M4x6; 螺丝 M4x6
17	IJK0081		Adaptor nut; 焊枪锁紧螺母
18	IJUC0049	AR0083	Central adaptor TW/Euro M12x1/Spring pins; 中央接头 TW/Euro M12x1/弹性针
19	IJAU0083	FA0027	Liner nut M11x1; 送丝管锁紧螺母 M11x1
20	IJJD0079-06		Steel liner 3.4m 1.2-1.6mm; 送丝管 3.4m 1.2-1.6mm
21	IJDH6018		Spanner for pan torch; 日式枪用六角扳手
22	IJDH6011		Spanner for MIG; MIG 焊枪扳手
<b>Complete Torch</b>			
	IJDU1826-36	MA6365	MIG MAXI 350 torch 3m with spring pins; 焊枪 MAXI 350/3m/弹性针
	IJDU1822-36	MA6366	MIG MAXI 350 torch 4m with spring pins; 焊枪 MAXI 350/4m/弹性针
	IJDU1823-36	MA3667	MIG MAXI 350 torch 5m with spring pins; 焊枪 MAXI 350/5m/弹性针

## Technical Data

Cooling: Gas Cooled  
 Duty Cycle: 60% 占载率: 60%  
 wire size:  $\Phi$ 0.8-2.0mm

## 技术参数

冷却方式: 气冷  
 500Amp CO<sub>2</sub>, 400Amp MIX  
 焊丝直径:  $\Phi$ 0.8-2.0mm



Position	Code	Ref.	Description
1	IJDT0078	MC0012	Gas Nozzle $\Phi$ 18; 喷嘴 $\Phi$ 18
2	IJDV0016-12	MD0005-12	Contact tip $\Phi$ 1.2/M8; 导电嘴 $\Phi$ 1.2/M8
3	IJDG0012	ME0006	Gas diffuser ;分流器
4	IJDL0648	MF0182	Insulator for Torch head; 绝缘环
5	IJDA0042	MF0086	Torch head ;枪颈
6	IJUZ0695	AU0028	Back fitting coaxial cable of MAXI; MAXI 枪电缆接头
7	IJDH0038	MT0072	Adjusting Block Kit Clamp; 定位块
8	IJDW0866-01		Handle; 手柄
8.1	IJK0684		Hanger for handle $\Phi$ 20; MAXI 手柄用挂钩 $\Phi$ 20
9	IJIR0081	BX0020	Trigger; 焊枪用开关
10	IJGU0885		Screw 3.0x10; 螺丝 3.0x10
11	IJK0788	BW0222	Joint for MIG handle; MIG手柄用球头
12	IJGU0887-01		Spring for cable support/Blue and white zinc plating; 电缆支撑用弹簧/镀蓝白锌
13	IJD00705	Mh0249	Coaxial cable 3m; 电缆组 3m
14	IJGU0835		Spring for cable support/Blue and white zinc plating; 电缆支撑用弹簧/镀蓝白锌
15	IJK0883		Back box with closing ring; 后把套/含锁紧环
16	IJGU0074	EA0018	Screw M4x6; 螺丝 M4x6
17	IJK0081		Adaptor nut; 焊枪锁紧螺母
18	IJUC0049	AR0083	Central adaptor TW/Euro M12x1/Spring pins; 中央接头 TW/Euro M12x1/弹性针
19	IJAU0083	FA0027	Liner nut M11x1; 送丝管锁紧螺母 M11x1
20	IJJD0079-06		Steel liner 3.4m 1.2-1.6mm; 送丝管 3.4m 1.2-1.6mm
21	IJDH6018		Spanner for pan torch; 日式枪用六角扳手
22	IJDH6011		Spanner for MIG; MIG 焊枪扳手
<b>Complete Torch</b>			
	IJDU1926-36	MA6465	MIG MAXI 450 torch 3m with spring pins; 焊枪 MAXI 450/3m/弹性针
	IJDU1922-36	MA6466	MIG MAXI 450 torch 4m with spring pins; 焊枪 MAXI 450/4m/弹性针
	IJDU1923-36	MA6467	MIG MAXI 450 torch 5m with spring pins; 焊枪 MAXI 450/5m/弹性针

## Technical Data

Cooling: Water Cooled  
 Duty Cycle: 100% 占载率: 100%  
 wire size:  $\Phi$ 1.0-2.4mm

## 技术参数

冷却方式: 水冷  
 400Amp CO<sub>2</sub>, 350Amp MIX  
 焊丝直径:  $\Phi$ 1.0-2.4mm



Position	Code	Ref.	Description
1	IJDT0078	MC0012	Gas Nozzle $\Phi$ 18; 喷嘴 $\Phi$ 18
2	JDV0016-12	MD0005-12	Contact tip $\Phi$ 1.2/M8; 导电嘴 $\Phi$ 1.2/M8
3	IJDG0015	ME0009	Gas diffuser; 分流器
4	IJDJ0072	MG0016	Torch head; 枪颈
5	IJDH0038	MT0072	Adjusting Block Kit Clamp; 定位块
6	IJDW0866- 01		Handle; 手柄
7	IJIR0081	BX0020	Trigger; 焊枪用开关
8	IJGU0885		Screw 3.0x16; 螺丝 3.0x16
9	IJK0788	BX0222	Joint for MIG handle; 手柄用球头
10	IJGU0881	EA0320	Spring cable support; 电缆支撑用弹簧
11	IJDE0088	MN0022	Cable assenbly; 水电缆组
12	IJK0726	BW0265	Handle closing ring; 手柄锁紧环
13	IJK0774		Back box for water cooled torches; 水冷枪后把套
14	IJGU0733		Clamp $\Phi$ 9.0mm; 卡箍 $\Phi$ 9.0mm
15	IJAU8081		Quick connector water $\Phi$ 6mm; 水冷快速插头 $\Phi$ 6mm
16	IJGU0074		Screw M4x6; 螺丝 M4x6
17	IJGU0775		Hose support for water cooled rear box; 水管支柱
18	IJK0083		Adaptor nut /Blue; 锁紧螺母/蓝色
19	IJUC0618	AR0102	Euro centre adaptor/water/maxi/spring pin; 欧式中央插头/水冷/MAXI/弹性针
20	IJAU0082	IFA0026	Liner nut; 送丝管锁紧螺母
21	IJLI0616	QB0105	EPDM output water tube $\Phi$ 5x8mm 0.8m red; EPDM 出水管 $\Phi$ 5x8mm 0.8m Red
22	IJJD0501	GM0540	Insulated Steel Liner 1.2-1.6/3m/Yellow; 带绝缘层送丝管 1.2-1.6/3m/黄色
23	IJDH6018	EA0297	Spanner for pan torch; 日式枪用六角扳手
24	IJDH6011		Spanner for MIG; MIG 焊枪扳手
25	IJK0317		Plastic support for water cooling connector red水堵/红色
26	IJK0319		Plastic support for water cooling connector blue水堵/蓝色
<b>Complete Torch</b>			
	IJDI7809-36	MB2343	MIG MAXI 4000 torch 3m with spring pins; 焊枪 MAXI 4000/3m/弹性针
	IJDI7800-36	MB2344	MIG MAXI 4000 torch 4m with spring pins; 焊枪 MAXI 4000/4m/弹性针
	IJDI7806-36	MB2345	MIG MAXI 4000 torch 5m with spring pins; 焊枪 MAXI 4000/5m/弹性针

## Technical Data

Cooling: Gas Cooled  
 Duty Cycle: 60% 占载率: 60%  
 wir size:  $\Phi$ 0.8-1.2mm

## 技术参数

冷却方式: 气冷  
 230Amp CO<sub>2</sub>, 200Amp MIX  
 焊丝直径:  $\Phi$ 0.8-1.2mm



Position	Code	Ref.	Description
1	IJDT0605		Conical nozzle/fume extraction/GF241/8 HOLES;除烟嘴/GF241/锥形/8孔
2	IJDT0665		Gas nozzle/GF241/16° / $\Phi$ 12.5;喷嘴/GF241/锥形 16° / $\Phi$ 12.5
3	IJDV0015-10		Contact tip/1.0/M6*28;导电嘴/1.0/M6*28
4	IJDL0691		Insulator 32;绝缘筒 32
5	IJDG0061		Diffuser/GF241/M6;分流器/GF241/M6
6	IJDA0615		Felix torch head/GF241/M10*1;枪颈 GF241/M10*1
7	IJGU8217		Hook up/Q235/extractione welding torch;挂钩/Q235/吸烟焊枪
8	IJIR0081		Trigger red;焊枪用开关21.8MM红色
9	IJDW0079		Torch handle/black/pa66+30%gf/extractione welding torch;MIG手柄/黑色/PA66+30%GF/吸烟焊枪
10	IJK0147		Joint with hole/black/pa66+30%gf/extractione welding torch;球节/带孔/黑色/PA66+30%GF/吸烟焊枪
11	IJDO0535		Cable assembling 25MMQ/3M;同轴电缆组/25MMQ/3米/环保吸尘用
11.1	IJAI0801		Torch head tube/GF241/ $\Phi$ 27除烟管/GF241/ $\Phi$ 27
12	IJK0972		Back box hole/blackpa66+30%gf/extractione welding torch;后把套/黑色/PA66+30%GF/吸烟焊枪
13	IJK0081		Gun plug nut;焊枪锁紧螺母/金属螺纹
14	IJUC0060		Euro central adapter body/spring pins;欧式中央接头/弹性针
15	IJJD0571-02		Insulated steel liner/1.0-1.2/3m RED/torch;带绝缘层送丝管 1.0-1.2/3米/红色
16	IJDH6011		Spanner for MIG;MIG 焊枪扳手

## Complete Torch

IJDUF2609	MIG GF241 TORCH 3M WITH SPRING PINS/FUME EXTRACTION;焊枪GF241/3米/弹性针/环保吸尘
IJDUF2600	MIG GF241 TORCH 4M WITH SPRING PINS/FUME EXTRACTION;焊枪GF241/4米/弹性针/环保吸尘
IJDUF2606	MIG GF241 TORCH 5M WITH SPRING PINS/FUME EXTRACTION;焊枪GF241/5米/弹性针/环保吸尘

## Technical Data

Cooling: Gas Cooled  
 Duty Cycle: 60% 占载率: 60%  
 wir size:  $\Phi$ 0.8-1.2mm

## 技术参数

冷却方式: 气冷  
 300Amp CO<sub>2</sub>, 270Amp MIX  
 焊丝直径:  $\Phi$ 0.8-1.2mm



Position	Code	Ref.	Description
1	IJDT0668		Conical nozzle/fume extraction/GF351/8 HOLES;除烟嘴/GF351/锥形/8孔
2	IJDT0661		Gas nozzle/GF351/ $\Phi$ 15;喷嘴/GF351/ $\Phi$ 15
3	IJDV0015-12		Contact tip/1.2/M6*28;导电嘴/1.2/M6*28
4	IJDL0697		Insulator 34A;绝缘筒 34A
5	IJDG0004		Diffuser/GF351/M8;分流器/GF351/M8
6	IJDA0615		Felix torch head/GF351/M10*1;枪颈 GF351/M10*1
7	IJGU8217		Hook up/Q235/extractione welding torch;挂钩/Q235/吸烟焊枪
8	IJIR0081		Trigger red;焊枪用开关21.8MM红色
9	IJDW0079		Torch handle/black/pa66+30%gf/extractione welding torch;MIG手柄/黑色/PA66+30%GF/吸烟焊枪
10	IJK0147		Joint with hole/black/pa66+30%gf/extractione welding torch;球节/带孔/黑色/PA66+30%GF/吸烟焊枪
11	IJDO0535		Cable assembling 25MMQ/3M;同轴电缆组/25MMQ/3米/环保吸尘用
11.1	IJAI0801		Torch head tube/GF351/ $\Phi$ 27;除烟管/GF351/ $\Phi$ 27
12	IJK0972		Back box hole/blackpa66+30%gf/extractione welding torch;后把套/黑色/PA66+30%GF/吸烟焊枪
13	IJK0081		Gun plug nut;焊枪锁紧螺母/金属螺纹
14	IJUC0060		Euro central adapter body/spring pins;欧式中央接头/弹性针
15	IJJD0571-02		Insulated steel liner/1.0-1.2/3m RED/torch;带绝缘层送丝管 1.0-1.2/3米/红色
16	IJDH6011		Spanner for MIG;MIG 焊枪扳手

## Complete Torch

IJDUF2909	MIG GF351 TORCH 3M WITH SPRING PINS/FUME EXTRACTION;焊枪GF351/3米/弹性针/环保吸尘
IJDUF2900	MIG GF351 TORCH 4M WITH SPRING PINS/FUME EXTRACTION;焊枪GF351/4米/弹性针/环保吸尘
IJDUF2906	MIG GF351 TORCH 5M WITH SPRING PINS/FUME EXTRACTION;焊枪GF351/5米/弹性针/环保吸尘





## SFPG-20A Dust Collector Performance Parameters 除尘器性能参数

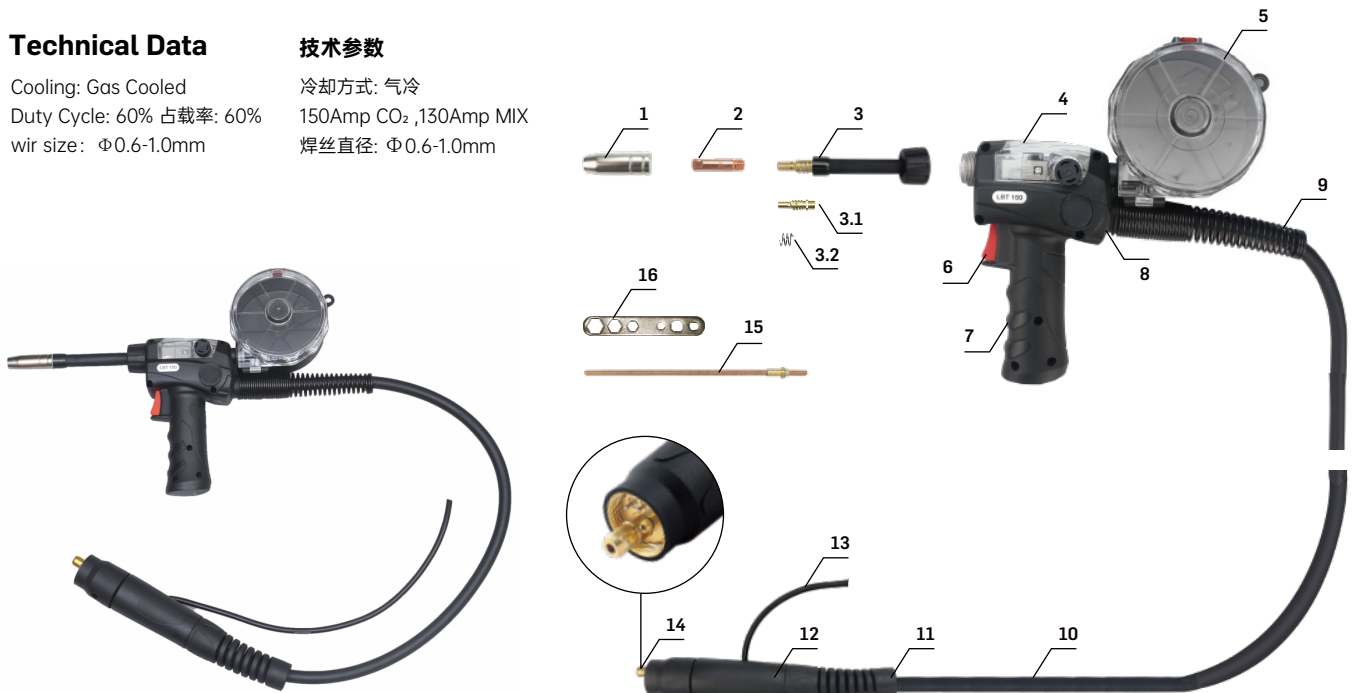
Inspiratory air volume 吸气风量/m <sup>3</sup> /h	200±10
Motor power 电机功率/Kw	0.8
Fan negative pressure 风机负压/Pa	23000
Noise 噪声 dB (A)	≤70±5
Voltage 电压 V/Hz	220/50
Dimension 设备外形尺寸(L*W*H)/mm	570*290*500
Quantity of filter cartridges 滤筒数量	1
Filter material 过滤材料	Polyester + Microporous film
Total filtration area 总过滤面积/m <sup>2</sup>	6
Compressed air/Mpa 压缩空气	0.5-0.6
Ash drum volume 灰筒容积/L	5
Ways to clean dust 清灰方式	Automatic cleaning
Control section 控制部分	DELIXI Electric
Weight 设备重量/Kg	25±5
Filter area 过滤面积/m <sup>2</sup>	6
Filter cartridge size 滤筒规格尺寸/mm	200x170

## Technical Data

Cooling: Gas Cooled  
 Duty Cycle: 60% 占载率: 60%  
 wir size:  $\Phi 0.6-1.0\text{mm}$

## 技术参数

冷却方式: 气冷  
 150Amp CO<sub>2</sub>, 130Amp MIX  
 焊丝直径:  $\Phi 0.6-1.0\text{mm}$



Position	Code	Ref.	Description
1	IJDT0074		Gas nozzle $\Phi 12$ 14-15AK;喷嘴 $\Phi 12$ 14-15AK
2	IJDV0014-08		Contact tip/0.8/M6*25;导电嘴/0.8/M6*25
3	IJDA0692		Torch head/LBT150;枪颈/LBT150
3.1	IJAI0673		Gas diffuser 15AK;分流器 15AK
3.2	IJGU0819		Nozzle spring 15AK;分流器弹簧 15AK
4	IJIK0526		Switch cap/PC;拉丝枪手柄盖/透明/PC
5	IJIK0190		拉丝枪丝盘组件/2018
6	IJIR0081		Trigger red;焊枪用开关 21.8MM 红色
7	IJDW0611		Mig grip handle/100/150/PA66+30%GF;拉丝枪手柄/不贴膜/100/150/PA66+30%GF
8	IJIK0788		Joint for MIG grip handle;MIG 手柄用球头
9	IJGU0881		Spring/cable support 401D-501D/black;电缆支撑用弹簧 401D-501D/黑色
10	IJDO0541		Cable assembling 16MMQ/3M;电缆组/16MMQ/3米/分体
11	IJGU0971		Spring support/MIG water cooling/black/minoo;MIG水冷弹簧支撑/黑色/米诺
12	IJIK0951		Back box hole for gas and water cooling torch/black/minoo;MIG空/水冷后把套/黑色/米诺
13	IJIR0378		Control wire 4x0.5MMQ;控制线 4x0.5MMQ (四色线为黑、白、红、蓝) /黑色外皮/不印字
14	IJUC0060-02		Euro central adapter body/without spring pins;欧式中央接头/不带弹性针
15	IJJD0646		Liner 4.0x2.0x200MM;磷铜送丝管 4.0x2.0x200MM
16	IJDH6011		Spanner for MIG;MIG 焊枪扳手
<b>Complete Torch</b>			
	IJDM0024		Wire drawing welding torch/LBT150/3M/16MMQ/integrated/4 wires;拉丝焊枪/LBT150/3M/16MMQ/气电一体/4芯
	IJDM0025		Wire drawing welding torch/LBT150/4M/16MMQ/integrated/4 wires;拉丝焊枪/LBT150/4M/16MMQ/气电一体/4芯
	IJDM0027		Wire drawing welding torch/LBT150/6M/16MMQ/integrated/4 wires;拉丝焊枪/LBT150/6M/16MMQ/气电一体/4芯
	IJDM0029		Wire drawing welding torch/LBT150/8M/16MMQ/integrated/4 wires;拉丝焊枪/LBT150/8M/16MMQ/气电一体/4芯

# LBT200/250 拉丝枪



## LB200 Technical Data

Cooling: Water Cooled  
Duty Cycle: 60% 占载率: 60%  
wir size:  $\Phi$ 0.6-1.0mm

## LB200 技术参数

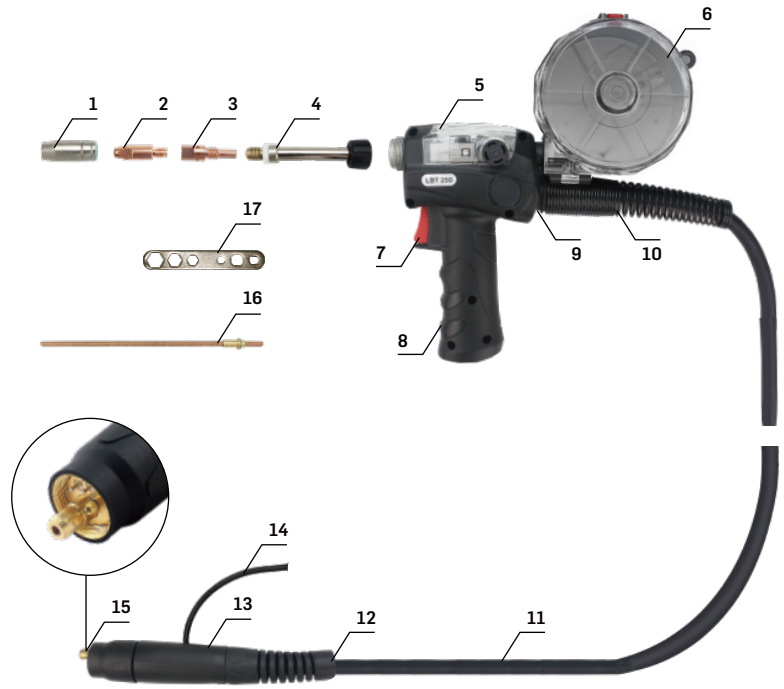
冷却方式: 水冷  
220Amp CO<sub>2</sub>  
焊丝直径:  $\Phi$ 0.6-1.0mm

## LB250 Technical Data

Cooling: Water Cooled  
Duty Cycle: 60% 占载率: 60%  
wir size:  $\Phi$ 0.6-1.0mm

## LB250 技术参数

冷却方式: 水冷  
250Amp CO<sub>2</sub>  
焊丝直径:  $\Phi$ 0.6-1.0mm



Position	Code	Ref.	Description
1	IJDT0089		Gas nozzle $\Phi$ 15 25AK;喷嘴 $\Phi$ 15 25AK
2	IJDV0015-10		Contact tip/1.0/M6*28;导电嘴/1.0/M6*28
3	IJDG0072		GAS DIFFUSER M6/35MM/25AK;分流器 M6/35MM/25AK
4	IJDA0693		TORCH HEAD/LBT250;枪头/LBT250
5	IJK0526		Switch cap/PC;拉丝枪手柄盖/透明/PC
6	IJK0190		Wire drawing gun reel assembly/2018;拉丝枪丝盘组件/2018
7	IJIR0081		Trigger red;焊枪用开关 21.8MM 红色
8	IJDW0611		Mig grip handle/100/150/PA66+30%GF;拉丝枪手柄/不贴皮/100/150/PA66+30%GF
9	IJK0788		Joint for MIG grip handle;MIG 手柄用球头
10	IJGU0881		Spring/cable support 401D-501D/black;电缆支撑用弹簧 401D-501D/黑色
11	IJDO0541		Cable assembling 16MMQ/3M;电缆组/16MMQ/3米/分体
12	IJGU0971		Spring support/MIG water cooling/black/minoo;MIG水冷弹簧支撑/黑色/米诺
13	IJK0951		Back box hole for gas and water cooling torch/black/minoo;MIG空/水冷后把套/黑色/米诺
14	IJRO378		Control wire 4x0.5MMQ;控制线 4x0.5MMQ (四色线为黑、白、红、蓝)/黑色外皮/不印字
15	IJUC0060-02		Euro central adapter body/without spring pins;欧式中央接头/不带弹性针
16	IJJD0646		Liner 4.0x2.0x200MM;磷铜送丝管 4.0x2.0x200MM
17	IJDH6011		Spanner for MIG;MIG 焊枪扳手

### Complete Torch

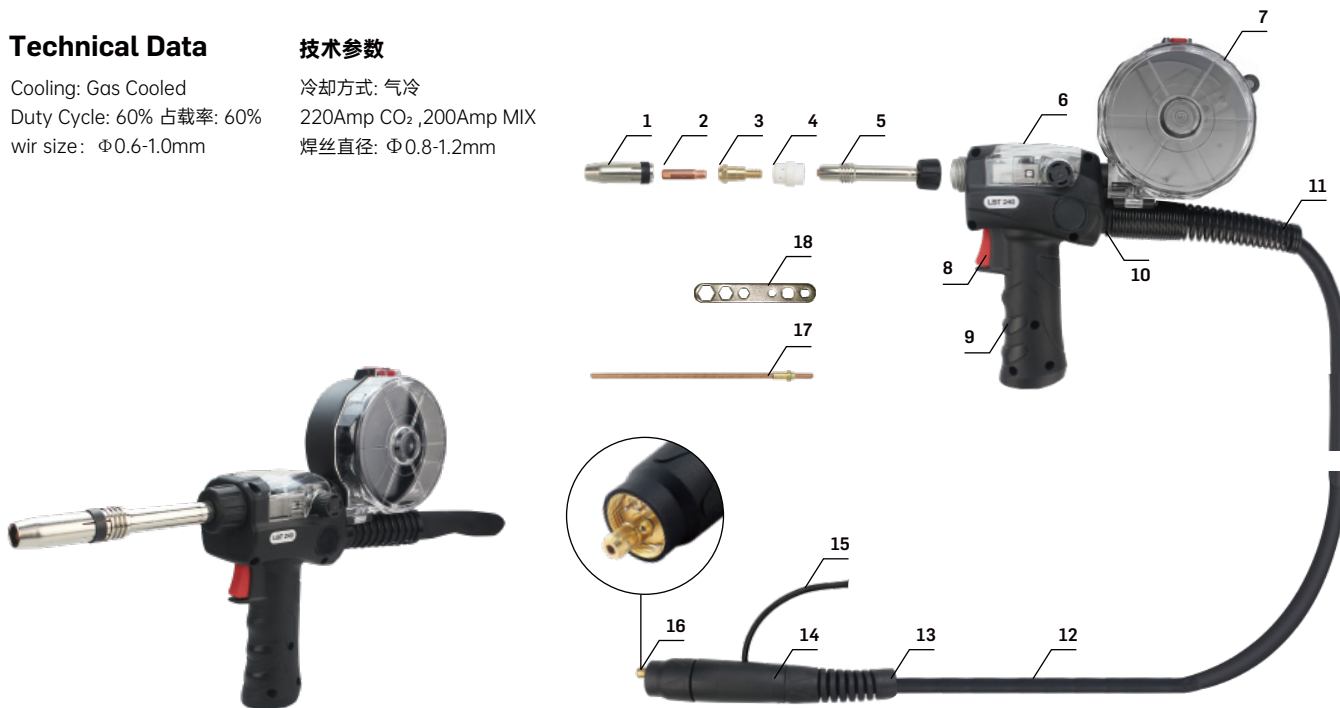
IJDM0224	Wire drawing welding torch/LBT250/3M/25MMQ/integrated/4 wires;拉丝焊枪/LBT250/3M/25MMQ/气电一体/4芯
IJDM0225	Wire drawing welding torch/LBT250/4M/25MMQ/integrated/4 wires;拉丝焊枪/LBT250/4M/25MMQ/气电一体/4芯
IJDM0227	Wire drawing welding torch/LBT250/6M/25MMQ/integrated/4 wires;拉丝焊枪/LBT250/6M/25MMQ/气电一体/4芯
IJDM0229	Wire drawing welding torch/LBT250/8M/25MMQ/integrated/4 wires;拉丝焊枪/LBT250/8M/25MMQ/气电一体/4芯

## Technical Data

Cooling: Gas Cooled  
 Duty Cycle: 60% 占载率: 60%  
 wir size:  $\Phi 0.6-1.0\text{mm}$

## 技术参数

冷却方式: 气冷  
 220Amp CO<sub>2</sub>, 200Amp MIX  
 焊丝直径:  $\Phi 0.8-1.2\text{mm}$



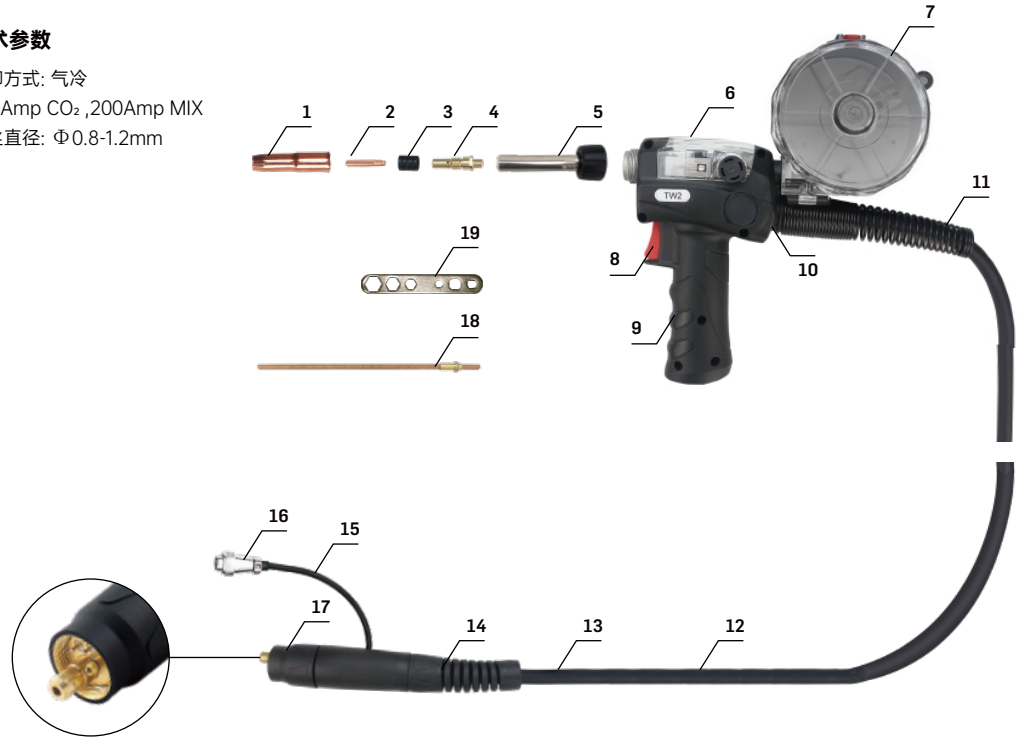
Position	Code	Ref.	Description
1	IJDT0817		GAS NOZZLE $\Phi 12,5$ 24KD;喷嘴 $\Phi 12,5$ 24KD
2	IJDV0014-10		CONTACT TIP/1.0/M6*25;导电嘴/1.0/M6*25
3	IJDV0694		CONTACT TIP/HOLDER 24KD M6 26MM;导电嘴座/24KD/M6/26MM
4	IJDG0540		WHITE CERAMIC GAS DIFFUSER 24KD;白色陶瓷分流器 24KD
5	IJDA0691		TORCH HEAD/LBT240;枪颈/LBT240
6	IJIK0526		Switch cap/PC;拉丝枪手柄盖/透明/PC
7	IJIK0190		Wire drawing gun reel assembly/2018;拉丝枪丝盘组件/2018
8	IJIR0081		Trigger red;焊枪用开关 21.8MM 红色
9	IJDW0611		Mig grip handle/100/150/PA66+30%GF;拉丝枪手柄/不贴膜/100/150/PA66+30%GF
10	IJIK0788		Joint for MIG grip handle;MIG 手柄用球头
11	IJGU0881		Spring/cable support 401D-501D/black;电缆支撑用弹簧 401D-501D/黑色
12	IJDO0541		Cable assembling 16MMQ/3M;电缆组/16MMQ/3米/分体
13	IJGU0971		Spring support/MIG water cooling/black/minoo;MIG水冷弹簧支撑/黑色/米诺
14	IJIK0951		Back box hole for gas and water cooling torch/black/minoo;MIG空/水冷后把套/黑色/米诺
15	IJIR0378		Control wire 4x0.5MMQ;控制线 4x0.5MMQ (四色线为黑、白、红、蓝) /黑色外皮/不印字
16	IJUC0060-02		Euro central adapter body/without spring pins;欧式中央接头/不带弹性针
17	IJJD0646		Liner 4.0x2.0x200MM;磷铜送丝管 4.0x2.0x200MM
18	IJDH6011		Spanner for MIG;MIG 焊枪扳手
<b>Complete Torch</b>			
	IJDM0124		Wire drawing welding torch/LBT240/3M/25MMQ/integrated/4 wires;拉丝焊枪/LBT240/3M/25MMQ/气电一体/4芯
	IJDM0125		Wire drawing welding torch/LBT240/4M/25MMQ/integrated/4 wires;拉丝焊枪/LBT240/4M/25MMQ/气电一体/4芯
	IJDM0127		Wire drawing welding torch/LBT240/6M/25MMQ/integrated/4 wires;拉丝焊枪/LBT240/6M/25MMQ/气电一体/4芯
	IJDM0129		Wire drawing welding torch/LBT240/8M/25MMQ/integrated/4 wires;拉丝焊枪/LBT240/8M/25MMQ/气电一体/4芯

## Technical Data

Cooling: Gas Cooled  
 Duty Cycle: 60% 占载率: 60%  
 wir size:  $\Phi 0.6-1.0\text{mm}$

## 技术参数

冷却方式: 气冷  
 220Amp CO<sub>2</sub>, 200Amp MIX  
 焊丝直径:  $\Phi 0.8-1.2\text{mm}$

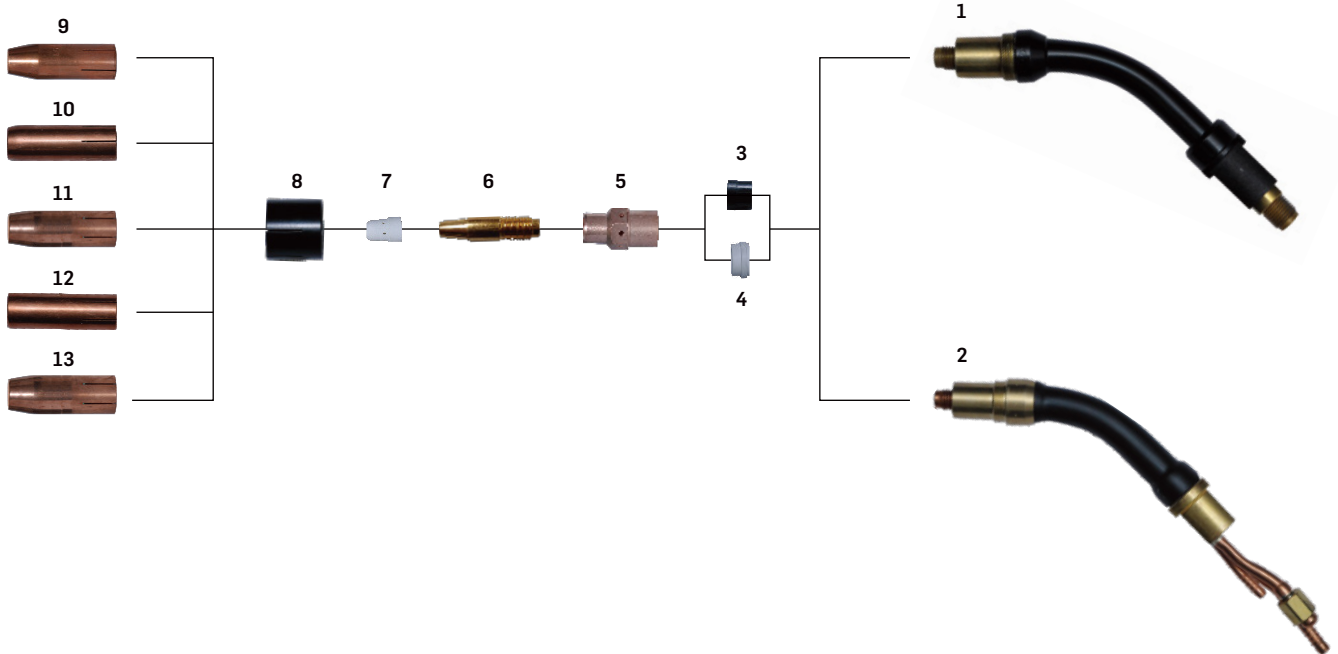


Position	Code	Ref.	Description
1	IJDT0790		Gas nozzle $\Phi 16$ 36KD; 喷嘴 $\Phi 16$ 36KD
2	IJDV0019-58		Contact tip/1.2/M6*28; 导电嘴/1.2/M6*28
3	IJDV0691		Contact tip/holder 36KD M6 32MM; 导电嘴座/36KD/M6/32MM
4	IJDG0088		White ceramic gas diffuser 36KD; 白色陶瓷分流器 36KD
5	IJDA0697		Torch head/quick replacement 36KD; 快换枪颈/36KD
6	IJIK0526		Switch cap/PC; 拉丝枪手柄盖/透明/PC
7	IJIK0190		Wire drawing gun reel assembly/2018; 拉丝枪丝盘组件/2018
8	IJIR0081		Trigger red; 焊枪用开关 21.8MM 红色
9	IJDW0611		Mig grip handle/100/150/PA66+30%GF; 拉丝枪手柄/不贴皮/100/150/PA66+30%GF
10	IJIK0788		Joint for MIG grip handle; MIG 手柄用球头
11	IJGU0881		Spring/cable support 401D-501D/black; 电缆支撑用弹簧 401D-501D/黑色
12	IJDO0541		Cable assembling 16MMQ/3M; 电缆组/16MMQ/3米/分体
13	IJGU0971		Spring support/MIG water cooling/black/minoo; MIG水冷弹簧支撑/黑色/米诺
14	IJIK0951		Back box hole for gas and water cooling torch/black/minoo; MIG空/水冷后把套/黑色/米诺
15	IJIR0378		Control wire 4x0.5MMQ; 控制线 4x0.5MMQ (四色线为黑、白、红、蓝) /黑色外皮/不印字
16	IJUC0060-02		Euro central adapter body/without spring pins; 欧式中央接头/不带弹性针
17	IJIR0401		Connector/WF20J9T11; 威普九芯航插/WF20J9T11
18	IJJD0646		Liner 4.0x2.0x200MM; 磷铜送丝管 4.0x2.0x200MM
19	IJDH6011		Spanner for MIG; MIG 焊枪扳手
<b>Complete Torch</b>			
	IJDM0824		Wire drawing welding torch/TW2/3M/25MMQ/integrated/4 wires; 拉丝焊枪/TW2/3M/25MMQ/气电一体/4芯
	IJDM0825		Wire drawing welding torch/TW2/4M/25MMQ/integrated/4 wires; 拉丝焊枪/TW2/4M/25MMQ/气电一体/4芯
	IJDM0827		Wire drawing welding torch/TW2/6M/25MMQ/integrated/4 wires; 拉丝焊枪/TW2/6M/25MMQ/气电一体/4芯
	IJDM0829		Wire drawing welding torch/TW2/8M/25MMQ/integrated/4 wires; 拉丝焊枪/TW2/8M/25MMQ/气电一体/4芯





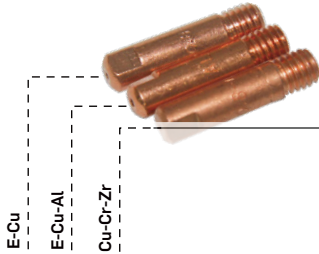
SUITABLE FOR FORNIUS 菲尼斯式  
AL 4000/AW 5000



Position	Code	Ref.	Description
1	IJDA0970	34.0350.1822	Torch head AL4000 45°;AL4000 枪颈 45°
2	IJDJ0770	34.0350.1820	Torch head AW5000 45°;AW5000 枪颈 45°
3	IJA11242	42.0100.1018	Insulator $\Phi$ 14.1/ $\Phi$ 21x16(AL4000);绝缘环 $\Phi$ 14.1/ $\Phi$ 21x16(AL4000)
4	IJA11246	42.0100.1016	Insulator $\Phi$ 15/ $\Phi$ 21x10(AW5000);绝缘环 $\Phi$ 15/ $\Phi$ 21x10(AW5000)
5	IJDG0014	42.0001.5122	Contact tip holder M10x1.25/SW13x32;导电嘴座 M10x1.25/SW13x32
6	IJDV0818-16		Contact tip;导电嘴
7	IJDG0543	42.0001.1007	White ceramic gas diffuser;白色陶瓷分流器
8	IJAG0056	42.0001.2970	Retaining sleeve (AL4000/AW5000); 喷嘴护套( AL4000/AW5000)
9	IJDT0807	42.0001.5128	Gas Nozzle $\Phi$ 17/ $\Phi$ 25x79.3;外喷嘴 $\Phi$ 17/ $\Phi$ 25x79.3
10	IJDT0801	42.0001.5129	Gas Nozzle $\Phi$ 15/ $\Phi$ 25x79.3;外喷嘴 $\Phi$ 15/ $\Phi$ 25x79.3;
11	IJDT0803	42.0001.5607	Gas Nozzle $\Phi$ 17/ $\Phi$ 25x74.5;外喷嘴 $\Phi$ 17/ $\Phi$ 25x74.5/短款
12	IJDT0804	42.0001.5127	Gas Nozzle $\Phi$ 20/ $\Phi$ 25x79.3;外喷嘴 $\Phi$ 20/ $\Phi$ 25x79.3
13	IJDT0805	42.0001.5130	Gas Nozzle $\Phi$ 17/ $\Phi$ 25x79.3;外喷嘴 $\Phi$ 17/ $\Phi$ 25x79.3/短款



SUITABLE FOR BINZEL  
PANASONIC



## E-Cu

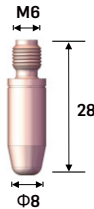
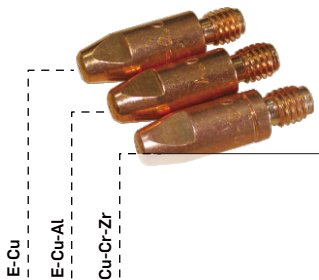
Code	Ref.	Wire
IJDV0014-06	140.0008	Φ0.6
IJDV0014-08	140.0059	Φ0.8
IJDV0014-09	140.0177	Φ0.9
IJDV0014-10	140.0253	Φ1.0

## E-Cu-Al

Code	Ref.	Wire
IJDV0014-58	141.0002	Φ0.8
IJDV0014-59		Φ0.9
IJDV0014-60	141.0007	Φ1.0
IJDV0014-62		Φ1.2

## Cu-Cr-Zr

Code	Ref.	Wire
IJDV0014-76	140.0855	Φ0.6
IJDV0014-78	140.0062	Φ0.8
IJDV0014-80	140.0256	Φ1.0
IJDV0014-82		Φ1.2



## E-Cu

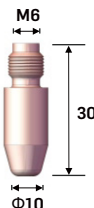
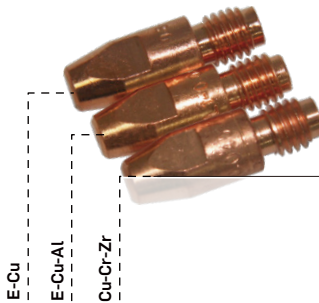
Code	Ref.	Wire
IJDV0015-06	140.0005	Φ0.6
IJDV0015-08	140.0051	Φ0.8
IJDV0015-10	140.0242	Φ1.0
IJDV0015-12	140.0379	Φ1.2
IJDV0015-16	140.0555	Φ1.6

## E-Cu-Al

Code	Ref.	Wire
IJDV0015-58	141.0001	Φ0.8
IJDV0015-59		Φ0.9
IJDV0015-60	141.0006	Φ1.0
IJDV0015-62	141.0010	Φ1.2
IJDV0015-66	141.0020	Φ1.6

## Cu-Cr-Zr

Code	Ref.	Wire
IJDV0015-78	140.0054	Φ0.8
IJDV0015-80	140.0245	Φ1.0
IJDV0015-82	140.0382	Φ1.2



## E-Cu

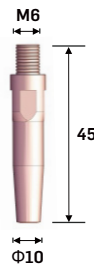
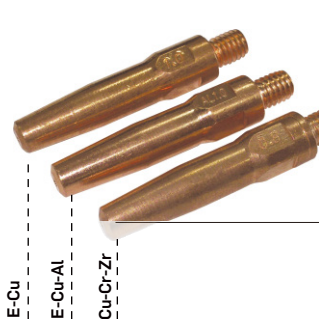
Code	Ref.	Wire
IJDV0016-08	140.0114	Φ0.8
IJDV0016-10	140.0313	Φ1.0
IJDV0016-12	140.0442	Φ1.2
IJDV0016-16	140.0587	Φ1.6
IJDV0016-20	140.0653	Φ2.0
IJDV0016-24	140.0677	Φ2.4

## E-Cu-Al

Code	Ref.	Wire
IJDV0016-58	141.0003	Φ0.8
IJDV0016-59		Φ0.9
IJDV0016-60	141.0008	Φ1.0
IJDV0016-62	141.0015	Φ1.2
IJDV0016-66	141.0022	Φ1.6
IJDV0016-70		Φ2.0
IJDV0016-74		Φ2.4

## Cu-Cr-Zr

Code	Ref.	Wire
IJDV0016-78	140.0117	Φ0.8
IJDV0016-80	140.0316	Φ1.0
IJDV0016-82	140.0445	Φ1.2
IJDV0016-84		Φ1.4
IJDV0016-86	140.0590	Φ1.6



## E-Cu

Code	Ref.	Wire
IJDV0757-08		Φ0.8
IJDV0757-10		Φ1.0
IJDV0757-12		Φ1.2
IJDV0757-14		Φ1.4
IJDV0757-16		Φ1.6

## E-Cu-Al

Code	Ref.	Wire
IJDV0757-60		Φ1.0
IJDV0757-62		Φ1.2
IJDV0757-64		Φ1.4

## Cu-Cr-Zr

Code	Ref.	Wire
IJDV0757-78		Φ0.8
IJDV0757-79		Φ0.9
IJDV0757-80		Φ1.0
IJDV0757-82		Φ1.2
IJDV0757-84		Φ1.4
IJDV0757-86		Φ1.6
IJDV0757-100		Φ1.0AL
IJDV0757-102		Φ1.2AL

**BERNARD  
ESAB  
LINCOLN  
MILLER  
SAF  
TREGAKISS  
INTERCHANGEABLE AT REQUEST**



## E-Cu

Code	Ref.	Wire
IJDV0773-06	11-23	Φ0.6
IJDV0773-08	11-30	Φ0.8
IJDV0773-09	11-35	Φ0.9
IJDV0773-10	11-40	Φ1.0
IJDV0773-12	11-45	Φ1.2



## E-Cu

Code	Ref.	Wire
IJDV0774-08	11H-30	Φ0.8
IJDV0774-09	11H-35	Φ0.9
IJDV0774-10	11H-40	Φ1.0
IJDV0774-12	11H-45	Φ1.2



## E-Cu

Code	Ref.	Wire
IJDV0775-06	11T-23	Φ0.6
IJDV0775-08	11T-30	Φ0.8
IJDV0775-09	11T-35	Φ0.9
IJDV0775-10	11T-40	Φ1.0
IJDV0775-12	11T-45	Φ1.2



## E-Cu

Code	Ref.	Wire
IJDV0779-06	14T-23	Φ0.6
IJDV0779-08	14T-30	Φ0.8
IJDV0779-09	14T-35	Φ0.9
IJDV0779-10	14T-40	Φ1.0
IJDV0779-12	14T-45	Φ1.2
IJDV0779-13	14T-52	Φ1.3
IJDV0779-16	14T-116	Φ1.6



## E-Cu

Code	Ref.	Wire
IJDV0772-09	14HT-35	Φ0.9
IJDV0772-10	14HT-40	Φ1.0
IJDV0772-12	14HT-45	Φ1.2
IJDV0772-13	14HT-52	Φ1.3
IJDV0772-16	14HT-116	Φ1.6
IJDV0772-20	14HT-564	Φ2.0



## E-Cu

Code	Ref.	Wire
IJDV0071-09	15H35	Φ0.9
IJDV0071-12	15H45	Φ1.2
IJDV0071-14	15H52	Φ1.4
IJDV0071-16	15H116	Φ1.6
IJDV0071-20	15H564	Φ2.0
IJDV0071-24	15H332	Φ2.4
IJDV0071-28	15H764	Φ2.8



## E-Cu

Code	Ref.	Wire
IJDV0019-06	14-23	Φ0.6
IJDV0019-08	14-30	Φ0.8
IJDV0019-09	14-35	Φ0.9
IJDV0019-10	14-40	Φ1.0
IJDV0019-12	14-45	Φ1.2
IJDV0019-13	14-52	Φ1.3
IJDV0019-16	14-116	Φ1.6
IJDV0019-20	14-564	Φ2.0
IJDV0019-62	14A-364	Φ1.2
IJDV0019-66	14A-116	Φ1.6



## E-Cu

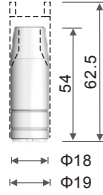
Code	Ref.	Wire
IJDV0010-09	14H-35	Φ0.9
IJDV0010-10	14H-40	Φ1.0
IJDV0010-12	14H-45	Φ1.2
IJDV0010-13	14H-52	Φ1.3
IJDV0010-16	14H-116	Φ1.6
IJDV0010-20	14H-564	Φ2.0
IJDV0010-62	14AH-364	Φ1.2
IJDV0010-66	14AH-116	Φ1.6



## E-Cu

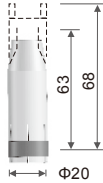
Code	Ref.	Wire
IJDV0072-09	15HFC35	Φ0.9
IJDV0072-12	15HFC45	Φ1.2
IJDV0072-13	15HFC52	Φ1.3
IJDV0072-16	15HFC116	Φ1.6
IJDV0072-20	15HFC564	Φ2.0
IJDV0072-24	15HFC332	Φ2.4
IJDV0072-28	15HFC764	Φ2.8
IJDV0072-32	15HFC18	Φ3.2
IJDV0072-62	15AHFC364	Φ1.2AL
IJDV0072-66	15AHFC116	Φ1.6AL

## MIG 15



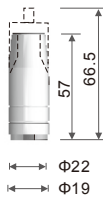
Code	Ref.	Description	Pack
IJDT0073	145.0123	Gas nozzle 9.5mm;喷嘴 9.5mm/15AK	10
IJDT0074	145.0075	Gas nozzle 12mm;喷嘴 12mm/15AK	10
IJDT0075	145.0041	Gas nozzle 16mm;喷嘴 16mm/15AK	10
IJDT0081	145.0183	Spot welding gas nozzle 16mm;点焊喷嘴 16mm/15AK	10
IJDT0722	145.0143	Tapered gas nozzle 13mm;锥型喷嘴 13mm/15AK	10

## MIG 24/240



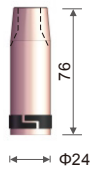
Code	Ref.	Description	Pack
IJDT0811	145.0047	Gas nozzle 17mm;喷嘴 17mm/24KD	10
IJDT0817	145.0080	Gas nozzle 12.5mm;喷嘴 12.5mm/24KD	10
IJDT0818	145.0128	Gas nozzle 10mm;喷嘴 10mm/24KD	10
IJDT0819	145.0174	Spot welding gas nozzle;点焊喷嘴/24AK	10

## MIG 25



Code	Ref.	Description	Pack
IJDT0088	145.0124	Gas nozzle 11mm;喷嘴 11mm/25AK	10
IJDT0089	145.0100	Gas nozzle 15mm;喷嘴 15mm/25AK	10
IJDT0080	145.0042	Gas nozzle 18mm;喷嘴 18mm/25AK	10
IJDT0726	145.0153	Tapered gas nozzle 11mm;锥型喷嘴 11mm/25AK	10
IJDT0723	145.0214	Tapered gas nozzle 14mm;锥型喷嘴 14mm/25AK	10
IJDT0086	145.0169	Spot welding gas nozzle 18mm;点焊喷嘴 18mm/25AK	10

## MIG 26/400/500



Code	Ref.	Description	Pack
IJDT0724	145.0085	Gas nozzle 16mm;喷嘴 16mm/401D-501D	10
IJDT0751	145.0132	Gas nozzle 14mm;喷嘴 14mm/401D-501D	10
IJDT0757	145.0051	Gas nozzle 19mm;喷嘴 19mm/401D-501D	10
IJDT0758	1450148	Adjusted tapered nozzle 15mm;喷嘴 15mm/401D-501D	10
IJDT0759	145.0179	Spot welding gas nozzle 20mm;点焊喷嘴 20mm/401D-501D	10

## MIG 36



Code	Ref.	Description	Pack
IJDT0082	145.0126	Gas nozzle 12mm;喷嘴 12mm/36KD	10
IJDT0083	145.0078	Gas nozzle 16mm;喷嘴 16mm/36KD	10
IJDT0084	145.0045	Gas nozzle 19mm;喷嘴 19mm/36KD	10
IJDT0671	145.0172	Spot welding gas nozzle 20mm;点焊喷嘴 20mm/36KD	10

## MIG 40KD



Code	Ref.	Description	Pack
IJDT0711	145.0079	Gas nozzle $\Phi$ 18mm 40KD;喷嘴 $\Phi$ 18mm 40KD	10
IJDT0712	145.0046	Gas nozzle $\Phi$ 21mm 40KD;喷嘴 $\Phi$ 21mm 40KD	10
IJDT0713	145.0127	Gas nozzle $\Phi$ 14mm 40KD;喷嘴 $\Phi$ 14mm 40KD	10

## SUITABLE FOR MIG MAXI



Code	Ref.	Description	Pack
IJDT0012	MC 0006	Gas nozzle $\Phi$ 14mm MAXI150;喷嘴 $\Phi$ 14mm MAXI150	10
IJDT0013	MC 0007	Spot Welding Gas Nozzle;点焊喷嘴	10
IJDT0016	MC 0005	Gas nozzle $\Phi$ 11mm MAXI150;喷嘴 $\Phi$ 11mm MAXI150	10



Code	Ref.	Description	Pack
IJDT0014	MC 0008	Gas nozzle $\Phi$ 11mm MAXI250;喷嘴 $\Phi$ 11mm MAXI250	10
IJDT0015	MC 0009	Gas nozzle $\Phi$ 14mm MAXI250;喷嘴 $\Phi$ 14mm MAXI250	10
IJDT0071	MC 0010	Gas Nozzle $\Phi$ 18mm;喷嘴 $\Phi$ 18mm	10
IJDT0684	MC 0128	Gas nozzle $\Phi$ 16mm MAXI250;喷嘴 $\Phi$ 16mm MAXI250	10
IJDT0685	MC 0129	Tapered Gas Nozzle $\Phi$ 14mm;圆锥喷嘴 $\Phi$ 14mm	10



Code	Ref.	Description	Pack
IJDT0077	MC 0011	Gas nozzle $\Phi$ 16mm MAXI350;喷嘴 $\Phi$ 16mm MAXI350	10
IJDT0078	MC 0012	Gas nozzle $\Phi$ 18mm MAXI350;喷嘴 $\Phi$ 18mm MAXI350	10
IJDT0079	MC 0013	Gas nozzle $\Phi$ 20mm MAXI350;喷嘴 $\Phi$ 20mm MAXI350	10
IJDT0754	MC 0298	Nozzle $\Phi$ 14mm ;喷嘴 $\Phi$ 14mm	10



## TW2-TW4

	Code	Ref.	Description
	IJDT0588	24AT-37SS	Gas nozzle 3/8" (φ9.5mm); 喷嘴φ9.5mm
	IJDT0095	24CT-50S	Gas nozzle 1/2" (φ12.7mm); 喷嘴φ12.7mm
	IJDT0001	24CT-62S	Gas nozzle 5/8" (φ16mm); 喷嘴φ16mm
	IJDT0007	24CT-75S	Gas nozzle 3/4" (φ19mm); 喷嘴φ19mm
	IJDT0703	24CT-37S	Gas nozzle 3/8" (φ9.5mm); 喷嘴φ9.5mm
	IJDT0784	24CT-50F	Gas nozzle 1/2" (φ12.7mm); 喷嘴φ12.7mm
	IJDT0785	24CT-62F	Gas nozzle 5/8" (φ16mm); 喷嘴φ16mm
	IJDT0791	24CT-75F	Gas nozzle 3/4" (φ19mm); 喷嘴φ19mm
	IJDT0797	24CT-62R	Gas nozzle 5/8" (φ16mm); 喷嘴φ16mm
	IJDT0798	24CT-72R	Gas nozzle 3/4" (φ19mm); 喷嘴φ19mm
	IJDT0586	24FN-75S	Gas nozzle 3/4" (φ19mm); 喷嘴φ19mm
	IJDT0589	24FN-50S	Gas nozzle 1/2" (φ12.7mm); 喷嘴φ12.7mm
	IJDT0580	24FN-62S	Gas nozzle 5/8" (φ16mm); 喷嘴φ16mm
	IJDT0582	24FN-62R	Gas nozzle 5/8" (φ16mm)L=52.3mm; 喷嘴φ16mm
	IJDT0583	24FN-62F	Gas nozzle 5/8" (φ16mm)L=39mm; 喷嘴φ16mm

## TW5

	Code	Ref.	Description
	IJDT0741	25CT-50	Gas nozzle 1/2" (φ12.7mm); 喷嘴
	IJDT0747	25CT-75	Gas nozzle 3/4" (φ19mm); 喷嘴
	IJDT0748	25CT-62	Gas nozzle 5/8" (φ16mm); 喷嘴



## TW2

	Code	Ref.	Description
	IJDL0691	32	Insulator 32; 绝缘筒 32

## TW3-TW4

	IJDL0697	34A	Insulator 34A; 绝缘筒 34A
--	----------	-----	------------------------

## TW2-TW4

	IJDL0697	34A	Insulator 34A; 绝缘筒 34A
	IJDT0096	34CT	Insulator 34CT; 绝缘筒 34CT

## TW5

	IJDT0749	35CT	Insulator 35CT; 绝缘筒 35CT
--	----------	------	--------------------------



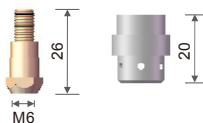
TW1	Code	Ref.	Description
 M11X1.5Thd	IJDT0091	21-37	Gas Nozzle 3/8" $\Phi$ 9.5mm ;喷嘴 $\Phi$ 9.5mm
	IJDT0097	21-50	Gas Nozzle 1/2" $\Phi$ 12.5mm ;喷嘴 $\Phi$ 12.5mm
	IJDT0098	21-62	Gas Nozzle 5/8" $\Phi$ 16mm ;喷嘴 $\Phi$ 16mm
 M11X1.5Thd	IJDT0511	21T-37	Gas nozzle 3/8" $\Phi$ 9.5mm ;喷嘴 $\Phi$ 9.5mm
	IJDT0517	21-37F	Gas nozzle 3/8" $\Phi$ 9.5mm ;喷嘴 $\Phi$ 9.5mm
 M11X1.5Thd	IJDT0518	21-37F	Gas nozzle 3/8" $\Phi$ 9.5mm ;喷嘴 $\Phi$ 9.5mm
	IJDT0982	21-50F	Gas nozzle 1/2" $\Phi$ 12.5mm ;喷嘴 $\Phi$ 12.5mm
	IJDT0983	21-62F	Gas nozzle 5/8" $\Phi$ 16 ;喷嘴 $\Phi$ 16

TW2	Code	Ref.	Description
	IJDT0796	22-62	Gas nozzle 5/8" $\Phi$ 16mm;喷嘴 $\Phi$ 16mm
	IJDT0799	22-37	Gas nozzle 3/8" ( $\Phi$ 9.5mm);喷嘴 $\Phi$ 9.5mm
	IJDT0790	22-50	Gas nozzle 1/2" $\Phi$ 12.5mm;喷嘴 $\Phi$ 12.5mm
	IJDT0510	22T-37SS	Gas nozzle 3/8" ( $\Phi$ 9.5mm);喷嘴 $\Phi$ 9.5mm
	IJDT0512	22-50SS	Gas nozzle 1/2" ( $\Phi$ 12.5mm) ;喷嘴 $\Phi$ 12.5mm
	IJDT0513	22-62SS	Gas nozzle 5/8" ( $\Phi$ 16mm) ;喷嘴 $\Phi$ 16mm
	IJDT0516	22-37SS	Gas nozzle 3/8" ( $\Phi$ 9.5mm);喷嘴 $\Phi$ 9.5mm



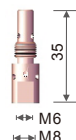
TW2-TW4	Code	Ref.	Description
 9/16-18Thd	IJDT0008	23-37	Gas nozzle 3/8" $\Phi$ 9.5mm;喷嘴 $\Phi$ 9.5mm
	IJDT0009	23-50	Gas nozzle 1/2" $\Phi$ 12.5mm;喷嘴 $\Phi$ 12.5mm
	IJDT0000	23-62	Gas nozzle 5/8" $\Phi$ 16mm;喷嘴 $\Phi$ 16mm;
 9/16-18Thd	IJDT0609	23-75	Gas nozzle 3/4" $\Phi$ 19mm;喷嘴 3/4" $\Phi$ 19mm
	IJDT0708	23-37F	Gas nozzle ;喷嘴
	IJDT0709	23-50F	Gas nozzle ;喷嘴
 9/16-18Thd	IJDT0700	23-62F	Gas nozzle ;喷嘴
	IJDT0706	23-75F	Gas nozzle 3/4" ( $\Phi$ 19mm) ;喷嘴 $\Phi$ 19mm
	IJDT0514	23H-50	Gas nozzle 1/2" ( $\Phi$ 12.5mm) ;喷嘴 $\Phi$ 12.5mm
 9/16-18Thd	IJDT0515	23H-62	Gas nozzle 5/8" ( $\Phi$ 16mm) ;喷嘴 $\Phi$ 16mm
	IJDT0511	23H-75	Gas nozzle 3/8" ( $\Phi$ 9.5mm) ;喷嘴 $\Phi$ 9.5mm
	IJDT0577	23T-37	Gas nozzle 3/8" ( $\Phi$ 9.5mm);喷嘴 $\Phi$ 9.5mm
	IJDT0578	23T-37F	Gas nozzle 3/8" ( $\Phi$ 9.5mm) ;喷嘴 $\Phi$ 9.5mm
	IJDT0606	24A-50	Gas nozzle 1/2" $\Phi$ 12.5mm;喷嘴 $\Phi$ 12.5mm
	IJDT0602	24A-62	Gas nozzle 5/8" $\Phi$ 16mm;喷嘴 $\Phi$ 16mm
	IJDT0603	24A-75	Gas nozzle 3/4" $\Phi$ 19mm;喷嘴 $\Phi$ 19mm
	IJDT0579	24A-37SS	Gas nozzle 3/8" ( $\Phi$ 9.5mm) ;喷嘴 $\Phi$ 9.5mm
	IJDT0570	24A-50SS	Gas nozzle 1/2" ( $\Phi$ 12.5mm) ;喷嘴 $\Phi$ 12.5mm
	IJDT0576	24A-62SS	Gas nozzle 5/8" ( $\Phi$ 16mm) ;喷嘴 $\Phi$ 16mm
	IJDT0572	24A-75SS	Gas nozzle 3/4" ( $\Phi$ 19mm) ;喷嘴 $\Phi$ 19mm
	IJDT0573	24AH-50	Gas nozzle 1/2" ( $\Phi$ 12.5mm) ;喷嘴 $\Phi$ 12.5mm
	IJDT0574	24AH-62	Gas nozzle 5/8" ( $\Phi$ 16mm) ;喷嘴 $\Phi$ 16mm
	IJDT0575	24AH-75	Gas nozzle 3/4" ( $\Phi$ 19mm) ;喷嘴 $\Phi$ 19mm
	IJDT0581	24AH-62SS	Gas nozzle 5/8" ( $\Phi$ 16mm) ;喷嘴 $\Phi$ 16mm
	IJDT0587	24AH-72SS	Gas nozzle 3/4" ( $\Phi$ 19mm) ;喷嘴 $\Phi$ 19mm

## MIG 24/240



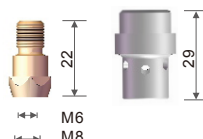
Code	Ref.	Description
○ IJDG0040	012.0183	White plastic gas diffuser; 白色塑料分流器/24KD
○ IJDG0540		White ceramic gas diffuser; 白色陶瓷分流器/24KD
● IJDV0694	142.0003	Contact tip holder ; 导电嘴座/M6X26mm/24KD
IJDV0695		Contact tip holder ; 导电嘴座/M6X28mm/24KD
● IJDG0840		Red silicon gas diffuser; 红色硅胶分流器/24KD

## MIG 25



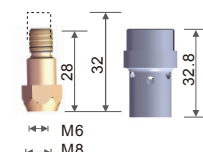
Code	Ref.	Description
● IJDG0072	142.0001	Gas diffuser M6X35mm; 分流器 M6×35mm/25AK
● IJDG0001		Gas diffuser M8X35mm; 分流器 M8×35mm/25AK

## MIG 26



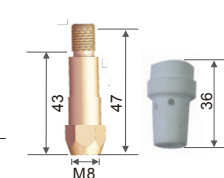
Code	Ref.	Description
● IJDV0027	142.0007	Contact tip holder M6X22mm; 导电嘴座M6X22mm/26KD
● IJDV0028	142.0082	White plastic gas diffuser; 白色塑料分流器/26KD
○ IJDG0046	018.0116	Contact tip holder M8X22mm; 导电嘴座M8X22mm/26KD
○ IJDG0546	018.0141	White ceramic gas diffuser; 白色陶瓷分流器/26KD
● IJDG0946		Black plastic gas diffuser; 黑色塑料分流器/26KD

## MIG 36



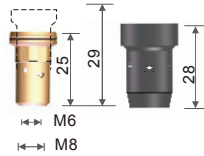
Code	Ref.	Description
○ IJDG0073	014.0261	White plastic gas diffuser; 白色塑料分流器/36KD
● IJDG0007	014.0026	Black plastic gas diffuser; 黑色塑料分流器/36KD
○ IJDG0573	014.0023	White ceramic gas diffuser; 白色陶瓷分流器/36KD
● IJDV0029	142.0005	Contact tip holder M6X28mm; 导电嘴座M6X28mm/36KD
● IJDV0020	142.0020	Contact tip holder M8X28mm; 导电嘴座M8X28mm/36KD
● IJDV0697	142.0011	Contact tip holder M6X32mm; 导电嘴座M6X32mm/36KD
● IJDV0698		Contact tip holder M8X32mm; 导电嘴座M8X32mm/36KD

## MIG 40KD



Code	Ref.	Description
● IJDV0037	145.0021	Contact tip holder 40KD/M8/43mm; 导电嘴座/40KD/M8/43mm
● IJDV0038	145.0025	Contact tip holder 40KD/M8/47mm; 导电嘴座/40KD/M8/47mm
○ IJDG0008	015.0021	White plastic gas diffuser 40KD; 白色塑料分流器 40KD
○ IJDG0542	015.0023	White ceramic gas diffuser 40KD; 白色陶瓷分流器 40KD

## MIG 400/500



Code	Ref.	Description
● IJDG0032	142.0022	Contact tip holder M8X25mm;导电嘴座M8X25mm/401D-501D
○ IJDG0035	030.0145	White plastic gas diffuser;白色塑料分流器/401D-501D
● IJDG0030	030.0037	Black plastic gas diffuser;黑色塑料分流器/401D-501D
● IJDG0047	142.0008	Contact tip holder M6X25mm;导电嘴座M6X25mm/401D-501D
● IJDG0048	142.0013	Contact tip holder M6X29mm;导电嘴座M6X29mm/401D-501D
● IJDG0049	142.0027	Contact tip holder M8X29mm;导电嘴座M8X29mm/401D-501D
○ IJDG0535	030.0190	White ceramic gas diffuser;白色陶瓷分流器/401D-501D
● IJDG0851		Contact tip holder M8X25mm/COPPER;导电嘴座M8X25mm/紫铜
● IJDG0857		Contact tip holder M8X29mm/COPPER;导电嘴座M8X29mm/紫铜



## TW1

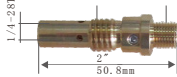
M11X1.5Thd M10X1.5Thd



Code	Ref.	Description
IJDG0074	51	Diffuser ;分流器

## TW2

1/2-13Thd 3/8-24Thd



Code	Ref.	Description
IJDG0088	52	Diffuser ;分流器;(used with 32 insulator;用于32绝缘体)

1/2-13Thd 3/8-24Thd



Code	Ref.	Description
IJDG0084	52-23	Diffuser ;分流器(used with 23 series nozzles or 34 A; 用于23系列或34 A系列的喷嘴)"

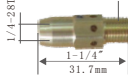
9/16-18Thd 3/8-24Thd



Code	Ref.	Description
IJDG0084	52-23	Diffuser ;分流器(used with 23 series nozzles or 34 A; 用于23系列或34 A系列的喷嘴)"

## TW3-TW4

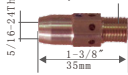
3/8-24Thd



Code	Ref.	Description
IJDG0081	54A	Diffuser ;分流器

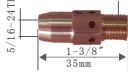
## TW5

7/16-20Thd



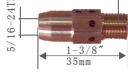
Code	Ref.	Description
IJDG0087	55	Diffuser ;分流器

7/16-20Thd



Code	Ref.	Description
IJDG0087	55SW	Diffuser ;分流器

7/16-20Thd



Code	Ref.	Description
IJDG0083	55H	Diffuser ;分流器



## EURO-TYPE/STEEL 欧式钢送丝管

### Blue $\Phi 0.6-0.8\text{mm}$

#### 蓝色钢送丝管

Insulation steel liner Blue  $\Phi 1.4 \times 4.0 \times 4.6\text{mm}$

L	Code	Ref.	Pack
3.4m	IJJD0511	124.0011	1
4.4m	IJJD0517	124.0012	1
5.4m	IJJD0518	124.0015	1
500m	IJJD0076		1

### Red $\Phi 1.0-1.2\text{mm}$

#### 红色钢送丝管

Insulation steel liner Red  $\Phi 2 \times 4.0 \times 4.6\text{mm}$

L	Code	Ref.	Pack
3.4m	IJJD0571	124.0026	1
4.4m	IJJD0577	124.0031	1
5.4m	IJJD0578	124.0035	1
500m	IJJD0029		1

### Yellow $\Phi 1.2-1.6\text{mm}$ (flat)

#### 黄色扁平钢送丝管

Insulation steel liner Yellow  $\Phi 2.4 \times 4.2 \times 4.7\text{mm}$

L	Code	Ref.	Pack
3.4m	IJJD0501	124.0041	1
4.4m	IJJD0507	124.0042	1
5.4m	IJJD0508	124.0044	1
500m	IJJD0028		1

### Yellow $\Phi 1.2-1.6\text{mm}$ (rounded)

#### 黄色钢送丝管

Insulation steel liner Yellow  $\Phi 2.5 \times 4.5 \times 4.7\text{mm}$

L	Code	Ref.	Pack
3.4m	IJJD0571	124.0026	1
4.4m	IJJD0577	124.0031	1
5.4m	IJJD0578	124.0035	1
500m	IJJD0029		1

### $\Phi 0.8-1.0\text{mm}$

#### 无绝缘层钢送丝管

Steel liner  $\Phi 1.4 \times 4.5\text{mm}$

L	Code	Ref.	Pack
3.5m	IJJD0588	122.0005	1
4.5m	IJJD0589	122.0007	1
5.5m	IJJD0580	122.0009	1
500m	IJJD0036		1

### $\Phi 1.0-1.2\text{mm}$

#### 无绝缘层钢送丝管

Steel liner  $\Phi 2.0 \times 4.5\text{mm}$

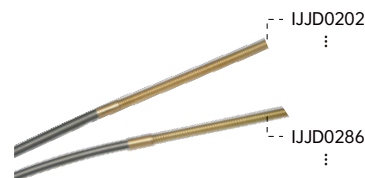
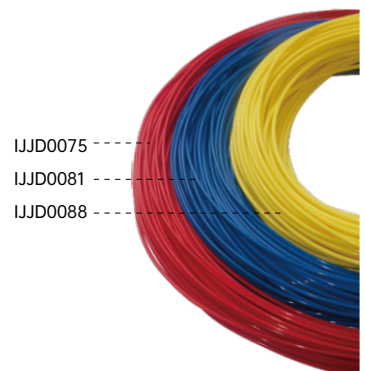
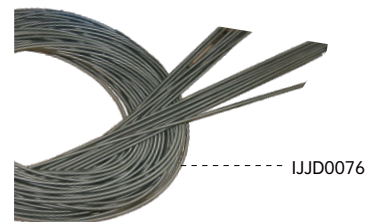
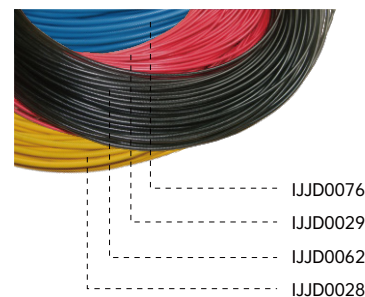
L	Code	Ref.	Pack
3.5m	IJJD0582	122.0031	1
4.5m	IJJD0583	122.0036	1
5.5m	IJJD0584	122.0039	1
500m	IJJD0020		1

### $\Phi 0.8-1.0\text{mm}$

#### 无绝缘层钢送丝管

Steel liner  $\Phi 1.4 \times 4.5\text{mm}$

L	Code	Ref.	Pack
3.5m	IJJD0588	122.0005	1
4.5m	IJJD0589	122.0007	1
5.5m	IJJD0580	122.0009	1
500m	IJJD0036		1



## EURO-TYPE/TEFLON 欧式特氟龙送丝管

### Blue $\Phi 0.6-0.9\text{mm}$

#### 蓝色特氟龙送丝管

Teflon liner  $\Phi 1.5 \times 4\text{mm}$

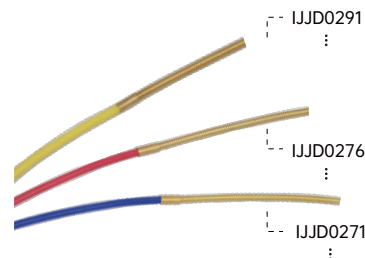
L	Code	Ref.	Pack
3.5m	IJJD0111	126.0005	1
4.5m	IJJD0117	126.0008	1
5.5m	IJJD0118	126.0011	1
200m	IJJD0081		1

### Red $\Phi 1.0-1.2\text{mm}$

#### 红色特氟龙送丝管

Teflon liner  $\Phi 2 \times 4\text{mm}$

L	Code	Ref.	Pack
3.5m	IJJD0171	126.0021	1
4.5m	IJJD0177	126.0026	1
5.5m	IJJD0178	126.0028	1
200m	IJJD0075		1



## EURO-TYPE/TEFLON 欧式特氟龙送丝管

### Yellow $\Phi$ 1.2-1.6mm

#### 黄色特氟龙送丝管

Teflon liner  $\Phi$ 3.0x4.5mm

L	Code	Ref.	Pack
3.5m	IJJD0221	126.0039	1
4.5m	IJJD0227	126.0042	1
5.5m	IJJD0228	126.0045	1
200m	IJJD0088		1

### Blue $\Phi$ 0.6-0.9mm

#### 蓝色特氟龙+铜送丝管

Teflon liner  $\Phi$ 4.0x1.5mm+terminator

L	Code	Ref.	Pack
3.5m	IJJD0271		1
4.5m	IJJD0277		1
5.5m	IJJD0278		1

### Red $\Phi$ 1.0-1.2mm

#### 红色特氟龙+铜送丝管

Teflon liner  $\Phi$ 2.0x4.0mm+terminator

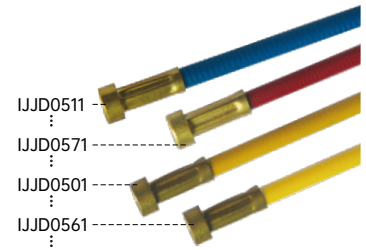
L	Code	Ref.	Pack
3.5m	IJJD0276		1
4.5m	IJJD0272		1
5.5m	IJJD0273		1

### Yellow $\Phi$ 1.2-1.6mm

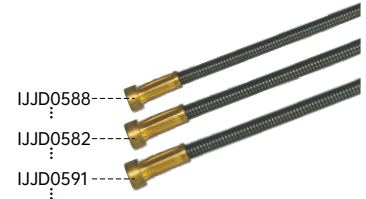
#### 黄色特氟龙+铜送丝管

Teflon liner  $\Phi$ 3.0x4.5mm+terminator

L	Code	Ref.	Pack
3.5m	IJJD0291		1
4.5m	IJJD0297		1
5.5m	IJJD0298		1



IJJD0511  
IJJD0571  
IJJD0501  
IJJD0561



IJJD0588  
IJJD0582  
IJJD0591

## EURO-TYPE/GRAPHITE 欧式石墨尼龙送丝管

### $\Phi$ 1.0-1.2mm

#### 石墨尼龙送丝管+铜送丝管

Graphite liner  $\Phi$ 4.0x2.0mm+terminator

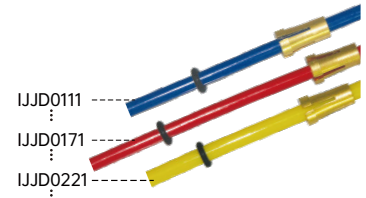
L	Code	Ref.	Pack
3.5m	IJJD0286		1
4.5m	IJJD0282		1
5.5m	IJJD0283		1
200m	IJJD0099		1

### $\Phi$ 1.2-1.6mm

#### 石墨尼龙送丝管+铜送丝管

Graphite liner  $\Phi$ 4.5x2.7mm+terminator

L	Code	Ref.	Pack
3.5m	IJJD0202		1
4.5m	IJJD0203		1
5.5m	IJJD0204		1
200m	IJJD0090		1



IJJD0111  
IJJD0171  
IJJD0221

### $\Phi$ 1.2-1.6mm

#### 石墨尼龙送丝管

Graphite liner  $\Phi$ 4.7x2.7mm

L	Code	Ref.	Pack
200m	IJJD0060		1

## PAN-TYPE 日式送丝管

### Black 0.8-1.0mm

#### 黑色钢送丝管

Insulation steel liner  $\Phi$ 1.8x4.2x5.0mm

L	Code	Ref.	Pack
3.1m	IJJD0562		1
4.1m	IJJD0563		1
5.1m	IJJD0564		1
500m	IJJD0021		1

### Black 1.2-1.6mm

#### 黑色钢送丝管

Insulation steel liner  $\Phi$ 2x5x5.6mm

L	Code	Ref.	Pack
3.5m	IJJD0529		1
4.5m	IJJD0520		1
5.5m	IJJD0526		1
500m	IJJD0072		1

### Green $\Phi$ 1.0-1.2mm

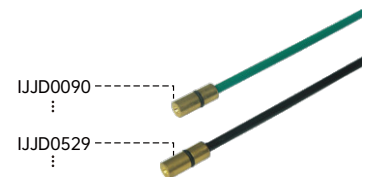
#### 绿色钢送丝管

Insulation steel liner  $\Phi$ 1.8x4.6x5.2mm

L	Code	Ref.	Pack
3.5m	IJJD0521		1
4.5m	IJJD0527		1
5.5m	IJJD0528		1
500m	IJJD0062		1



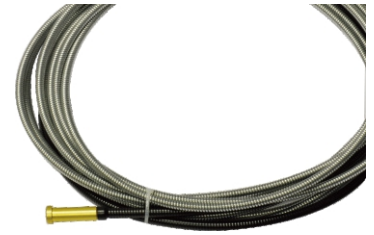
IJJD0099  
IJJD0090



IJJD0090  
IJJD0529

Amp	L(in/m)	Code	Ref.	Wire	Pack
160A	15"(4.6m)	IJJD0754	23-40-15	0.23"(0.6)	1
	15"(4.6m)	IJJD0755	35-40-15	0.030"-0.035"(0.8-0.9)	1
	15"(4.6m)	IJJD0015	45-40-15	0.040"-0.045"(1.0-1.2)	1
180-250A	15"(4.6m)	IJJD0811	42-23-15	0.23"(0.6)	1
	11"(3.4m)	IJJD0077-03		0.030"-0.035"(0.8-0.9)	1
	15"(4.6m)	IJJD0077	42-3035-15	0.030"-0.035"(0.8-0.9)	1
300-450A	11"(3.4m)	IJJD0078-03		0.035"-0.045"(0.9-1.2)	1
	15"(4.6m)	IJJD0782		0.035"-0.045"(0.9-1.2)	1
	11"(3.4m)	IJJD0079-03	44-3545-15	0.052"-1/16"(1.3-1.6)	1
	15"(4.6m)	IJJD0079		0.052"-1/16"(1.3-1.6)	1
	11"(3.4m)	IJJD0787-03	44-116-15	5/64"(2.0)	1
	15"(4.6m)	IJJD0787		5/64"(2.0)	1
	15"(4.6m)	IJJD0877	44-564-15	3/32"(2.4)	1
300-450A	15"(4.6m)	IJJD0082	45-3545-15	0.035"-0.045"(0.9-1.2)	1
	15"(4.6m)	IJJD0083	45-116-15	0.052"-1/16"(1.3-1.6)	1
	15"(4.6m)	IJJD0084	45-564-15	5/64"(2.0)	1
	15"(4.6m)	IJJD0097	45-332-15	3/32"(2.4)	1

Amp	L(in/m)	Code	Ref.	Wire	Pack
160A	10"(3m)	IJJD0991	35TF-40-10	0.030"-0.035"(0.8-0.9)	1
	10"(3m)	IJJD0997	35TF-40-10	0.040"-3/64"(1.0-1.2)	1
180-250A	15"(4.6m)	IJJD0998	42N-3545-15	0.036"-3/64"(0.8-1.2)	1
	15"(4.6m)	IJJD0999	44N-3545-15	0.036"-3/64"(0.8-1.2)	1
300-450A	15"(4.6m)	IJJD0990	44N-116-15	1/16"(1.6)	1
	15"(4.6m)	IJJD0267	45N-116-15	0.030"-3/64"(0.8-1.2)	1
	15"(4.6m)	IJJD0990	45N-116-15	1/16"(1.6)	1



160A

180-250A

300-450A



500-650A



## EURO-TYPE 欧式

### 15AK

L	Code	Ref.	Pack
3m	IJDO0674		1
4m	IJDO0687		1
5m	IJDO0688		1

### 26KD

L	Code	Ref.	Pack
3m	IJDO0607		1
4m	IJDO0608		1
5m	IJDO0600		1

### 40KD

L	Code	Ref.	Pack
3m	IJDO0620		1
4m	IJDO0626		1
5m	IJDO0622		1

## PAN TYPE 日式

### PAN180

L	Code	Ref.	Pack
3m	IJDO0121		1
4m	IJDO0127		1
5m	IJDO0128		1

### PAN500

L	Code	Ref.	Pack
3m	IJDO0191		1
4m	IJDO0197		1
5m	IJDO0198		1

## Power cable 水电缆

L	Code	Ref.	Pack
3m	IJLU0075		1
4m	IJLU0081		1
5m	IJLU0087		1

## Wire conduit 送丝管

L	Code	Ref.	Pack
3m	IJLI0038		1
4m	IJLI0039		1
5m	IJLI0030		1

## Water inlet tube 进水管

L	Code	Ref.	Pack
3m	IJLI0032		1
4m	IJLI0033		1
5m	IJLI0034		1

### 24-25KD

L	Code	Ref.	Pack
3m	IJDO0675		1
4m	IJDO0680		1
5m	IJDO0686		1

### 36KD

L	Code	Ref.	Pack
3m	IJDO0681		1
4m	IJDO0683		1
5m	IJDO0684		1

### PAN350

L	Code	Ref.	Pack
3m	IJDO0199		1
4m	IJDO0190		1
5m	IJDO0196		1

## Water cooled cable 240/400/500

L	Code	Ref.	Pack
3m	IJDE0078		1
4m	IJDE0079		1
5m	IJDE0070		1

## Gas tube 气管

L	Code	Ref.	Pack
3m	IJLI0041		1
4m	IJLI0047		1
5m	IJLI0048		1

## Control wire 控制线

L	Code	Ref.	Pack
3m	IJIRO601-03		1
4m	IJIRO601-04		1
5m	IJIRO601-05		1

## Rubber tube 橡胶外管

L	Code	Ref.	Pack
3m	IJDL0716		1
4m	IJDL0712		1
5m	IJDL0713		1

### Gas Cooled 气冷

EURO



PAN

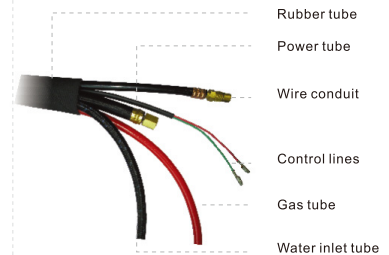


### Water Cooled 水冷

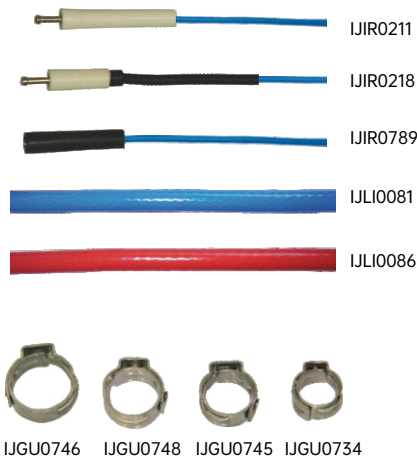
EURO



### Assembly 水电缆组



Code	Ref.	Description
IJUC0066		Euro central adaptor body/spring pins/with Nut;欧式中央接头/弹性针/带螺母
IJUC0069		Water euro central adaptor body/spring pins/with Nut;欧式水冷中央接头/弹性针/带螺母
IJUC0611		Euro central adaptor/water/tynos/spring pin;欧式中央接头/水冷/tynos/弹性针
IJUD1011	501.0168	Euro central adaptor femaler/machine side-axial;欧式中央插座/轴向
IJUD1017		Euro central adaptor femaler radial;欧式中央插座/纵向
IJUD1018		Mini euro central adaptor fdmale-axial;迷你欧式中央插座/轴向
IJUD4017		Current clamp 16mm;电缆压块 16mm
IJUH0017		Central adaptor female machine side;欧式中央插座/机器端
IJUH0010		Mini central adaptor female machine side;迷你欧式中央插座/机器端
IJUH6011		Euro central adaptor female machine side;迷你欧式中央插座/机器端
IJUH6016		Euro central adaptor female machine side;迷你欧式中央插座/机器端
IJUH6010		Mini euro central adaptor female machine side;迷你欧式中央插座/机器端
IJK0074		Gun plug nut/plastic nut;焊枪锁紧螺母/塑料螺纹
IJK0070	501.0616	Plastic housing;塑料法兰
IJK0081		Gun plug nut;焊枪锁紧螺母
IJK0082	500.0213	Gun plug nut BZ type;焊枪锁紧螺母/BINZEL式
IJK0083		Gun plug nut new blue;焊枪锁紧螺母(新)/蓝色
IJK0084		Gun plug nut new red;焊枪锁紧螺母(新)/红色
IJK0085		Gun plug nut new orange;焊枪锁紧螺母(新)/橙色
IJK0089		Gun plug nut/BZ type/brass screw;焊枪锁紧螺母/BINZEL式铜螺母
IJK0656		Back box hole;后把套
IJK0714		Back box hole;后把套
IJK0774		Back box hole/water;后把套/水冷
IJK0791		Plastic housing/MINI;塑料法兰/迷你
IJK0783		Back box hole/water;后把套/水冷
IJIR0211		Spring pin with wire and insulator for air cooling;气冷接头用弹性针
IJIR0218		Spring pin with wire and insulator for water cooling;水冷接头用弹性针
IJIR0789		Control wire with pin/0.5mm <sup>2</sup> /800mm;AMP控制线/0.5mm <sup>2</sup> /800mm
IJLI0081		Blue wired hose $\Phi$ 5 $\times$ 8mm;增强网纹管 $\Phi$ 5 $\times$ 8mm/蓝色
IJLI0086		Red wired hose $\Phi$ 5 $\times$ 8mm;增强网纹管 $\Phi$ 5 $\times$ 8mm/红色
IJLI0073		Black wired hose $\Phi$ 5 $\times$ 8mm;增强网纹管 $\Phi$ 5 $\times$ 8mm/黑色
IJLI0098		PU tube $\Phi$ 6 $\times$ 8mm/high tempreture;PU管 $\Phi$ 6 $\times$ 8mm/耐高温
IJGU0734		Clamp $\Phi$ 7.0mm;卡箍 $\Phi$ 7.0mm
IJGU0745	171.0002	Clamp $\Phi$ 8.7mm;卡箍 $\Phi$ 8.7mm
IJGU0746		Clamp $\Phi$ 10.5mm;卡箍 $\Phi$ 10.5mm
IJGU0748	173.0001	Clamp $\Phi$ 9.5mm;卡箍 $\Phi$ 9.5mm



# YOUR CHOICE

**PRODUCT  
MANUAL**

**COMPANY INTRODUCTION  
WITH HIGH FREQUENCY  
WITHOUT HIGH FREQUENCY**

**YOUR PROFESSIONAL  
WELDING SUPPLIER**

